

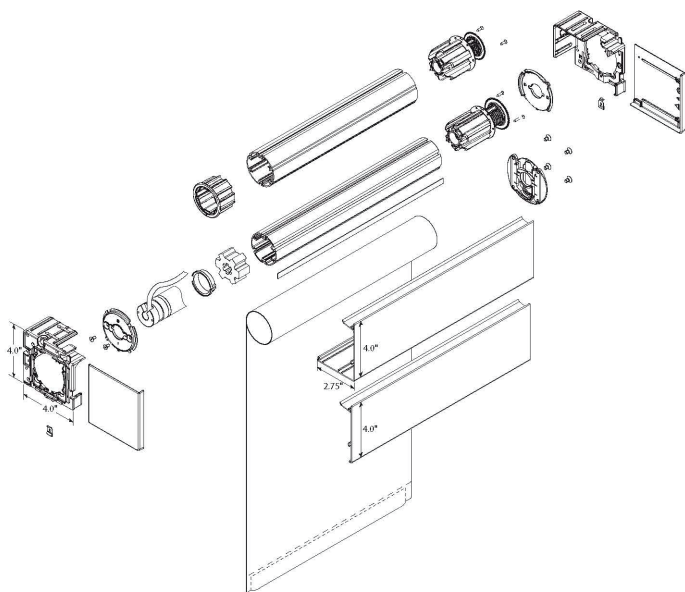


# Installation Instructions

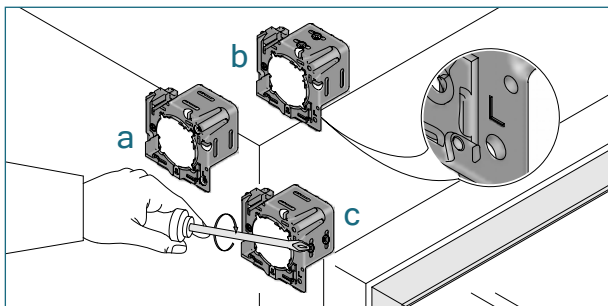
## RB 500 Motorized Roller Shades

### Motorized Roller Shade W/ Fascia

## 5-236 Series-Motor Operation

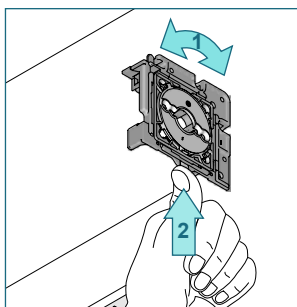
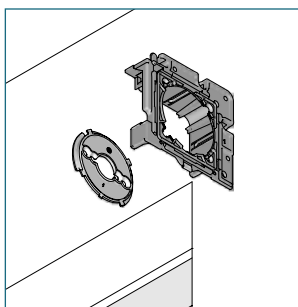


# Installation

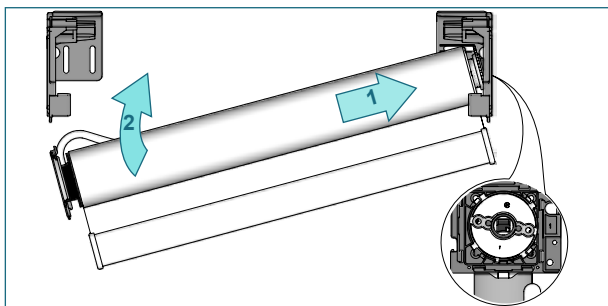


Install the brackets (L or R marked inside) with the screws provided.

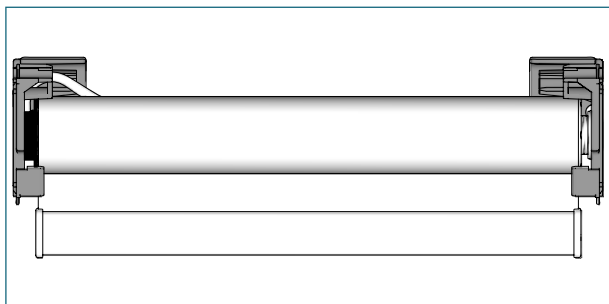
a) recess    b) ceiling    c) wall



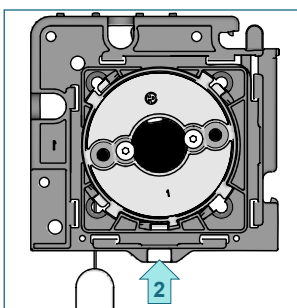
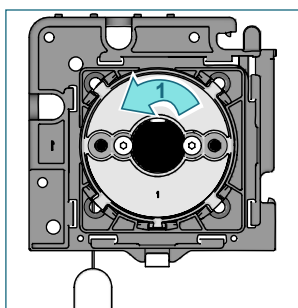
Insert the Plate L into the bracket on the non-operating side. Turn the Plate L in the rolling off direction (1) and secure it with the locking clip (2). Not necessary when using bracket with leveler.



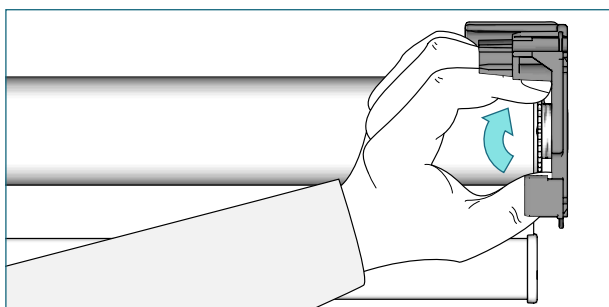
Place the shade with the tube bearing plug onto the bracket. Push the shade against plug and lift up...



... line up teeth of Plate L with bracket and insert.

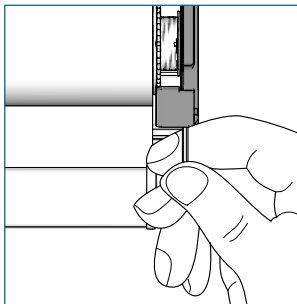
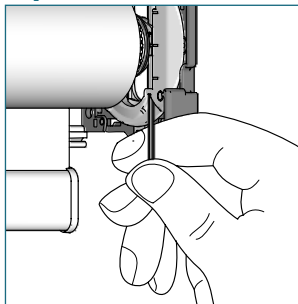


Turn the shade (10°) in the rolling off direction (1) and secure it with the locking clip (2).

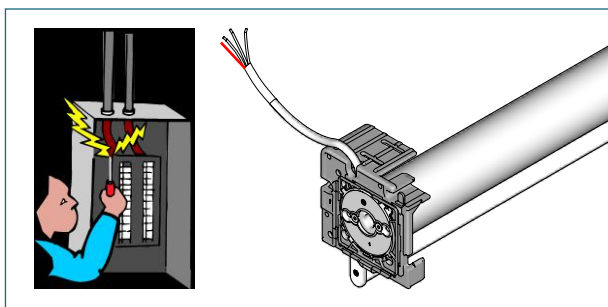


Secure the shade by turning the locking ring on the tube bearing plug furthest away from the bracket.

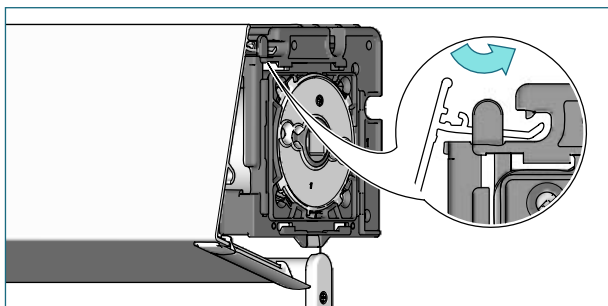
## Option: Leveler



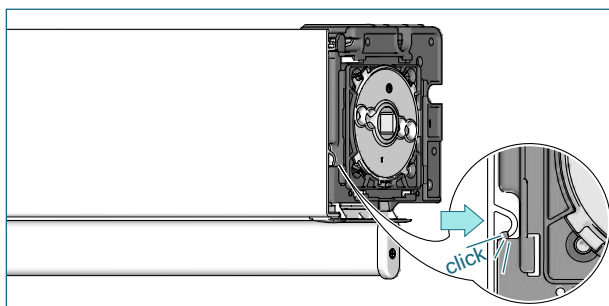
To adjust skewing, put the provided Allen key into the screw of the leveler and turn it left or right to move the shade up and down. Support lifting of large heavy shades with the palm of your hand.



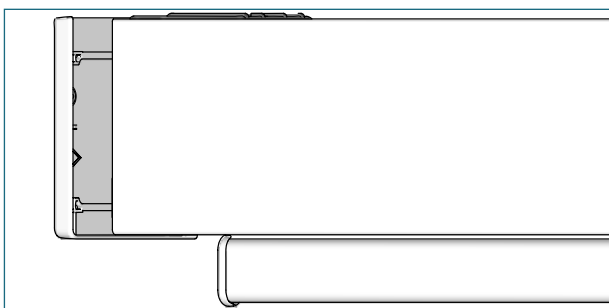
Connect the motor and controls in accordance with all safety standards.



Place the fascia in the bracket. Make sure that the fascia slides under the nose of the bracket.

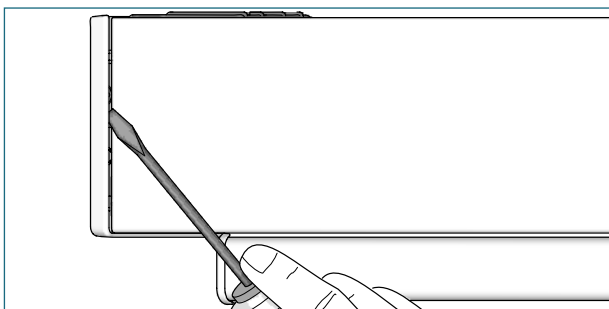


Push the fascia to snap it into the bracket.

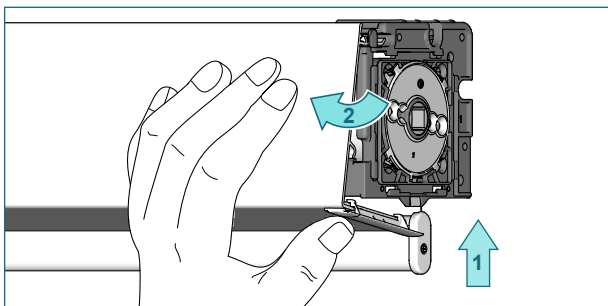


Slide the bracket covers onto the brackets.

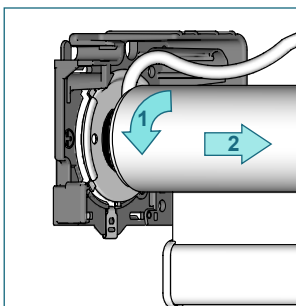
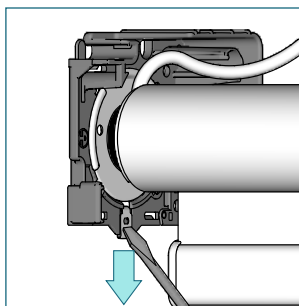
## Removal



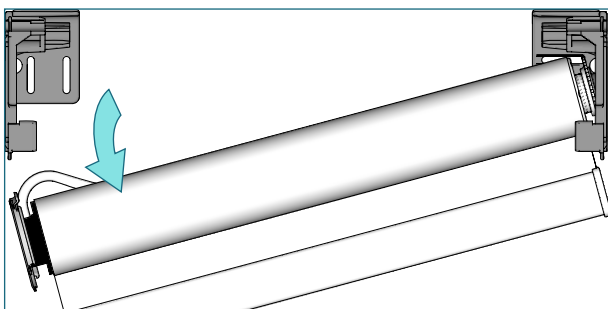
Disconnect power to the motor. Place the screw driver under the bracket cover, turn the screw driver and slide the bracket cover from the bracket.



Press the bottom of the fascia upwards (1) and pull it outwards (2).



Unfasten the locking ring. Place the screw driver into the slot of the locking clip. Press the locking clip down and turn the shade in the roll-up direction. Then pull the shade outwards.



Push the shade against the tube bearing plug and slide it out of the bracket.