

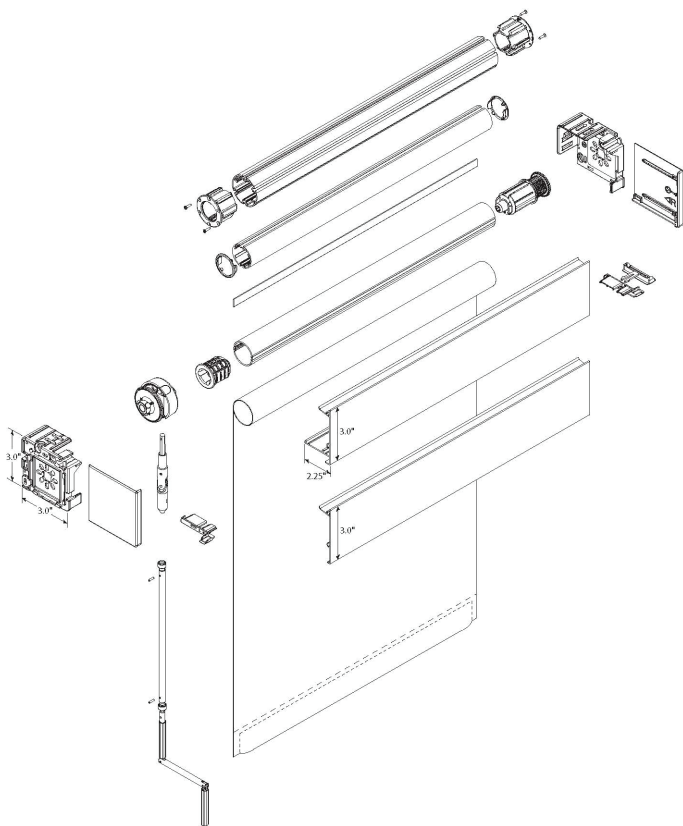


Installation Instructions

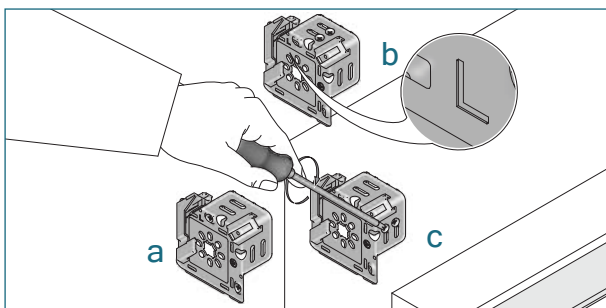
RB 500 Manual Roller Shades

Standard Crank With Fascia

5-35 Series-Crank Operation

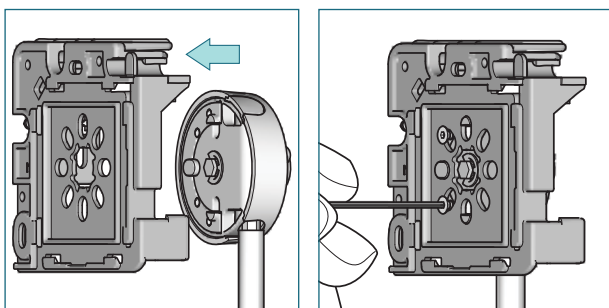


Installation

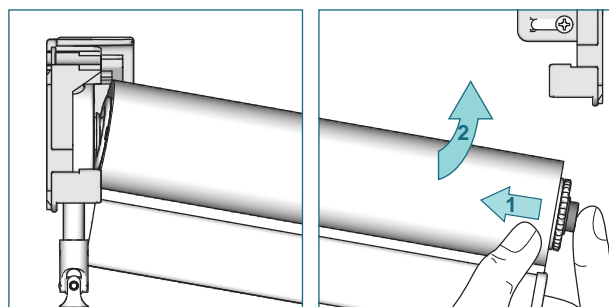


Install the brackets (L or R marked inside) with the screws provided.

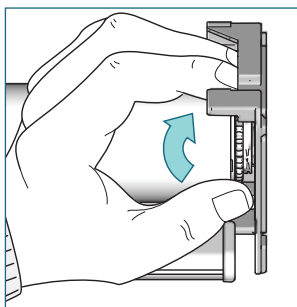
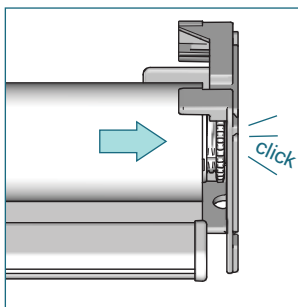
a) recess b) ceiling c) wall



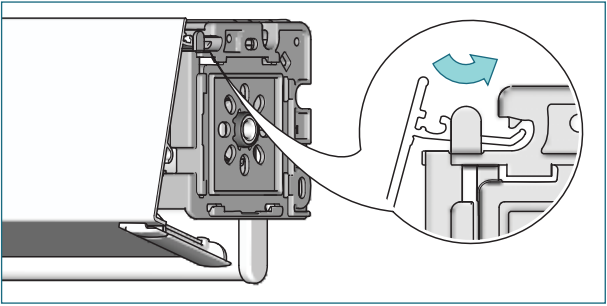
Place the crank in the bracket and attach both screws.



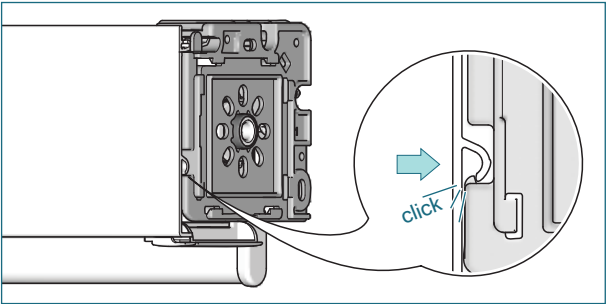
Place the tube on to the crank head. Press the tube bearing plug and lift the shade ...



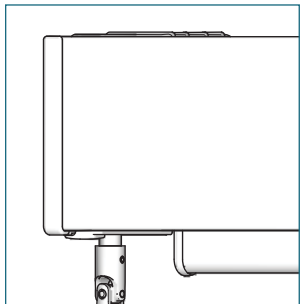
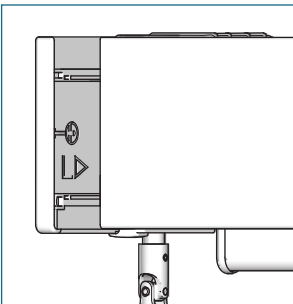
... until it snaps into the bracket. Secure shade by turning the locking ring furthest away from the bracket.



Place the fascia in the bracket. Make sure that the fascia slides under the nose of the bracket.

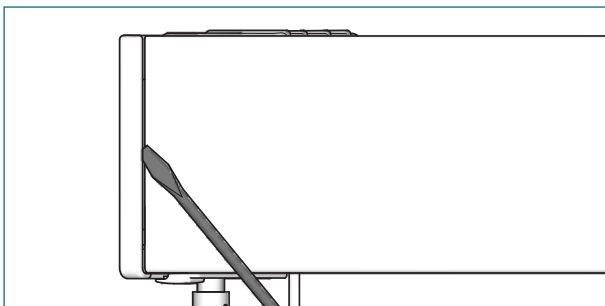


Push the fascia to snap it into the bracket.

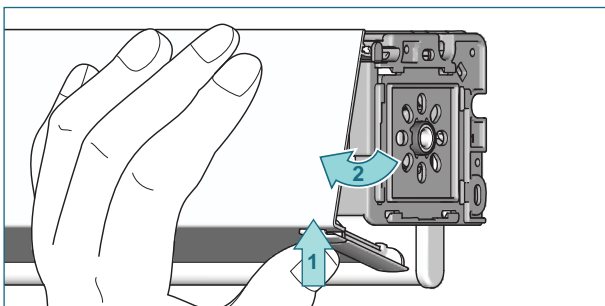


Slide the bracket covers onto the brackets.

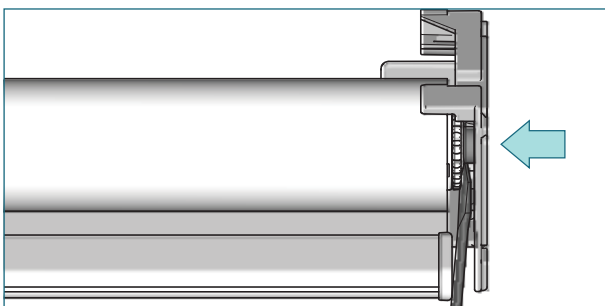
Removal



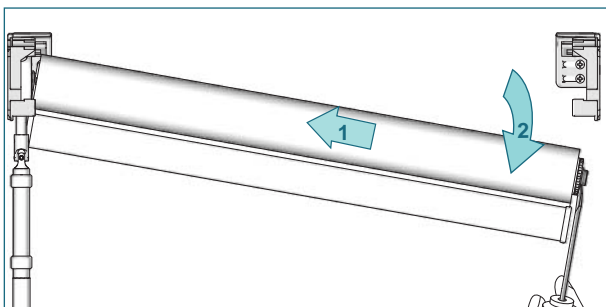
Place the screw driver under the bracket cover, turn the screw driver and slide the bracket cover from the bracket.



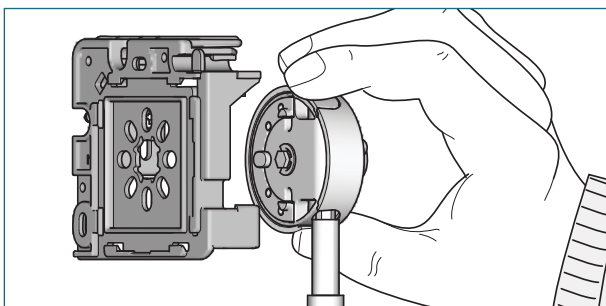
Press the bottom of the fascia upwards (1) and pull it outwards (2).



Unfasten the locking ring. Slide a screw driver between locking ring and bracket and push the tube bearing plug in the crank direction.



Move the shade downwards out of the bracket.



Loosen both screws and take the crank out of the bracket.