

animeo IP Building Controller

Part #1822314



Overview:

The animeo® IP Building Controller is an integrated hardware and software control point for Somfy Digital Network (SDN) installations. The Building Controller provides dynamic solar management using Somfy powered motorized window coverings and climate information provided by a real-time weather station. The Building Controller features an intuitive graphical user interface to simplify programming, commissioning, operation and system status. For larger installations, the Building Controller's capacity can be expanded with the addition of the animeo IP Sub Controller (#1860201).



The Building Controller features an integrated router for IP connectivity, which allows for a stable network connection between the Building Controller and Sub Controller(s); connecting to the building network allows for remote servicing and occupant-facing virtual keypads.

The Building Controller is suitable as a stand-alone control solution for both new and existing SDN installations as well as part of third party BMS systems.

animeo IP System Overview:

animeo® IP is a total solar management system utilizing Somfy-powered intelligent motorized window coverings as well as digital keypads and weather sensors. The system's controllers, sensors and keypads can be added to both new and existing Somfy Digital Network installations for comprehensive solar management as either a stand-alone solution or integrated into third party control systems.

An intuitive user interface allows for simplified commissioning, building management and technical support, featuring drag-and-drop zone creation, motor auto discovery and at-a-glance system status updates.

Every animeo IP installation includes an animeo IP Building Controller that supports up to 200 motors. The animeo IP is a scalable system and network capacity is expanded by adding one Sub Controller for each additional group of 200 motors. For systems exceeding 1000 motors the Building Controller is configured to only manage network traffic and not have any direct motor connections.

The animeo IP Controller resides on a standard Somfy Digital Network (SDN) bus. Proper SDN system design must be respected for optimal animeo IP performance.

Features Summary:

- Sun tracking for dynamic facade control
- Sensor threshold based motor control
- Accurate time & astronomic motor control
- Network-based motor control with user account access
- Facility manager access to global system status & control
- Integration with third party control systems and BMS Systems
- System auto discovery of motors, sensors, keypads
- IP connectivity for Sub Controller connections, virtual keypads, remote access and programming
- Windows 7-based drag-and-drop setup, configuration & operation

Technical Specifications:

- Input: Universal power supply 100V AC – 120V AC
- Power Consumption: 1.25 Amps (Max)
- Material: ABS
- Dimensions: 6 7/8" W x 4" H x 1 3/4" D
- ARM-based processor
- Internal OS: Linux Client OS: Windows 7 or higher
- Dual SDN Bus (dedicated Motor & Sensor buses)
- Dedicated IP Bus with integrated router
- Integrated upgradeable 1GB flash storage
- Self-Calibrating, Hardware real-time clock with battery backup
- Dry Contact input & output for third party integration
- Shipping Weight: 1 lb.

Optional Accessories:

- | | |
|---------------------------------------|----------|
| ▪ animeo IP Sub Controller | #1860201 |
| ▪ Bus & Sensor Station Power Supply | #1822440 |
| ▪ animeo IP DecoFlex 6-Button White * | #1811288 |
| ▪ animeo IP DecoFlex 8-Button White * | #1811289 |
| ▪ RTS Receiver for animeo IP | #1810816 |
| ▪ Sensor Station Mast | #9013726 |
| ▪ Compact Sensor Station | #9015047 |

Compliance Specifications:

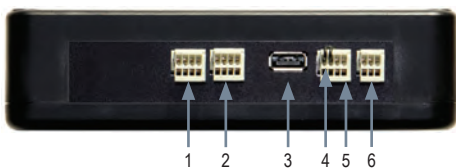
- UL Listed
- CE Approved
- IEC Appliance Protection Class II
- SEQR Type 1 Action
- NEMA Index Protection Rating: IP20
- NI Pollution Degree 2
- Operating Temperature Range: Ambient Temperature
- Operating Relative Humidity: 85%

What's in the Box:

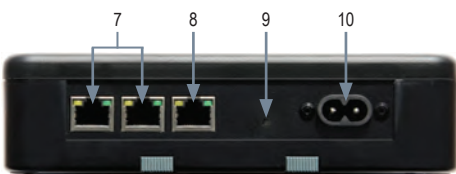
- animeo IP Building Controller
- Power Cable
- Instructions (when applicable)

Connections and Indicators:

TOP SIDE

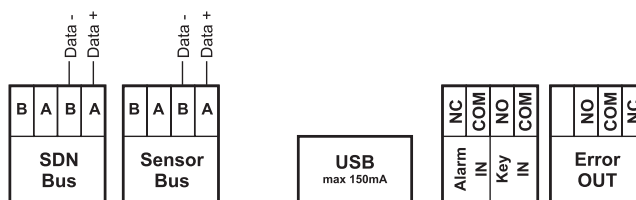


BOTTOM SIDE

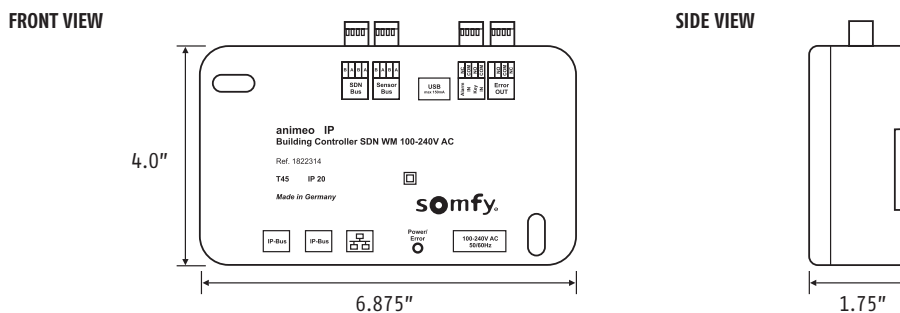


ELEMENT	FUNCTION
1 SDN Bus	SDN Bus for motor & keypad connection
2 Sensor Bus	SDN Bus for environmental sensor connection
3 Service	USB Connection for service
4 Alarm Input	NC input allowing for system override from 3rd party controller
5 Key In	NO input allowing for system override from 3rd part controller
6 Error Out	Digital Output for notification of system failure 24V DC @ 1A (NC or NO)
7 Animeo IP Network	10/100 Internal Network for connecting to Sub Controllers
8 External Network	10/100 Network Connection for Virtual Keypads and Remote Access
9 Status Indicator	Solid Green = initial system boot up Rapid Green/Red Flash = configuration commit Green Flash* = system normal Red Flash = system has experienced an error (not failed) *Speed of flash indicates system load
10 Power Input	100V AC – 240V AC switching power supply

Cable Pinouts:

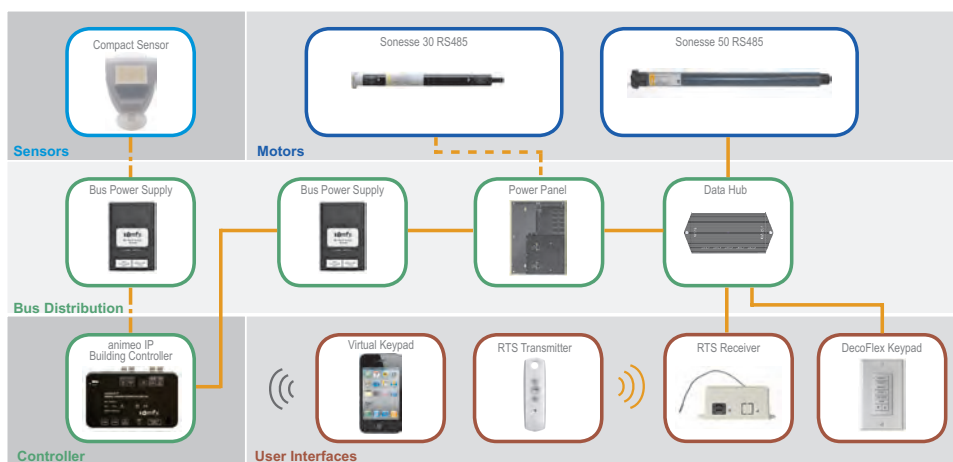


Dimensions:

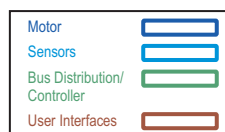


Wiring Best Practices:

- **Alarm Input/Key IN/Error OUT:** Use two conductor 20–24 AWG cable.
- **ALL Connections below:** Category 5 or higher cable with a 568B pinout configuration.
- **SDN Bus:** The Building Controller should be placed within 30' of the SDN bus line.
- **Sensor Bus:** The sensor bus should not exceed 4,000' in total wire length.
- **External IP Network:** The external IP network cable should not exceed 330'
- **animeo IP Network:** The animeo IP network should not exceed 330'



Component Types



Wiring Connection Types

