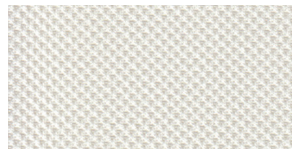
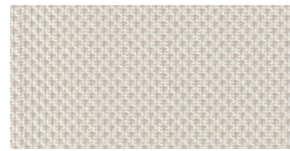




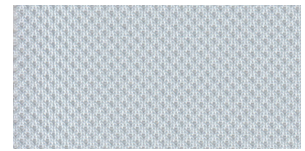
CLOUD



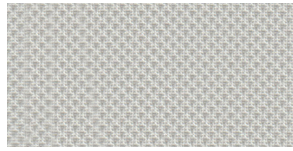
LIGHT



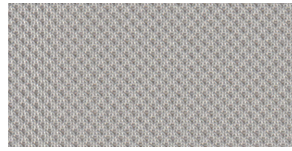
NATURAL



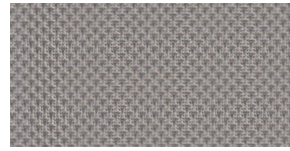
WIND



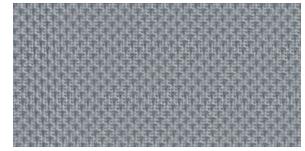
HAZE



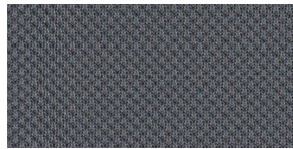
SHALE



SHADOW



RAIN



STORM



Specifications

MAX. FABRIC WIDTH: 118"
ROLL LENGTH: 50 yd
FABRIC WEIGHT: 8.41 oz/yd² ± 5%
FABRIC THICKNESS: .027" ± 5%
OPENNESS FACTOR: 3%
COMPOSITION: 100% Polyester/PVC Free
 67% Recycled Content

UV BLOCKAGE: 97%
FIRE CLASSIFICATION: NFPA 701-10 TM#1,
 California U.S. Title 19
FUNGAL RESISTANCE: ASTM E2180, ASTM G21

COLOR	SOLAR OPTICAL PROPERTIES				SHGC/G VALUE	
	TS	RS	AS	TV	CL-S	DG
CLOUD	28	65	7	28	0.37	0.36
LIGHT	29	62	9	28	0.39	0.37
NATURAL	28	60	12	26	0.40	0.38
WIND	26	60	14	23	0.40	0.38
HAZE	26	59	15	23	0.40	0.38
SHALE	25	53	22	19	0.44	0.40
SHADOW	19	51	30	12	0.44	0.41
RAIN	21	50	29	13	0.45	0.41
STORM	18	40	42	8	0.50	0.44

TS Solar Transmittance
RS Solar Reflectance
AS Solar Absorptance
TV Visual Transmittance
SHGC Solar Heat Gain Coefficient

CL-S 4mm Clear Glass, Single Glazing
DG Double Glazing, 4mm/16mm/4mm
 with low E-coating in position 3,
 space filled with Argon

• The Solar Heat Gain Coefficient represents the percentage of solar energy directly transmitted and re-radiated to the inside through the glazing system.