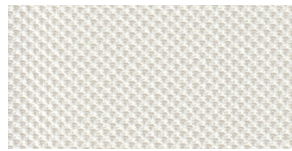
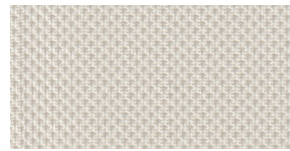




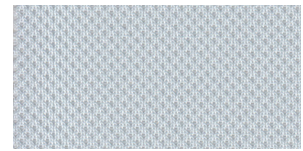
CLOUD



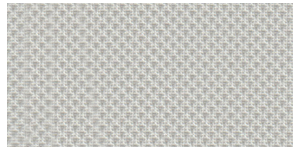
LIGHT



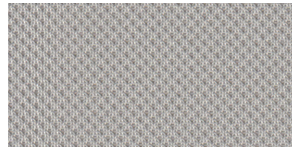
NATURAL



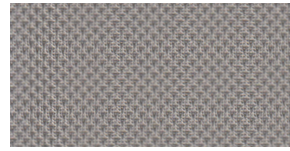
WIND



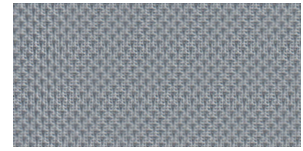
HAZE



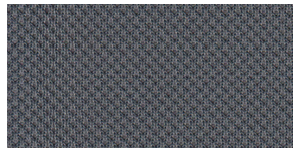
SHALE



SHADOW



RAIN



STORM



Specifications

MAX. FABRIC WIDTH: 118"
ROLL LENGTH: 50 yd
FABRIC WEIGHT: 7.93 oz/yd² ± 5%
FABRIC THICKNESS: .026" ± 5%
OPENNESS FACTOR: 5%
COMPOSITION: 100% Polyester/PVC Free
 70% Recycled Content

UV BLOCKAGE: 95%
FIRE CLASSIFICATION: NFPA 701-10 TM#1,
 California U.S. Title 19
FUNGAL RESISTANCE: ASTM E2180, ASTM G21

COLOR	SOLAR OPTICAL PROPERTIES				SHGC/G VALUE	
	TS	RS	AS	TV	CL-S	DG
CLOUD	32	60	8	32	0.41	0.38
LIGHT	31	59	10	30	0.41	0.38
NATURAL	30	57	13	28	0.42	0.39
WIND	31	56	13	28	0.43	0.39
HAZE	29	56	15	26	0.42	0.39
SHALE	27	51	22	22	0.45	0.41
SHADOW	25	46	29	18	0.48	0.42
RAIN	24	48	28	16	0.46	0.42
STORM	21	38	41	11	0.52	0.45

TS Solar Transmittance
RS Solar Reflectance
AS Solar Absorptance
TV Visual Transmittance
SHGC Solar Heat Gain Coefficient

CL-S 4mm Clear Glass, Single Glazing
DG Double Glazing, 4mm/16mm/4mm
 with low E-coating in position 3,
 space filled with Argon

• The Solar Heat Gain Coefficient represents the percentage of solar energy directly transmitted and re-radiated to the inside through the glazing system.