

FR Roller Shades



HunterDouglas 
Architectural

Effective and attractive, Hunter Douglas Architectural FR Roller Shades offer hundreds of fabric choices, mounted on durable, powerful operating mechanisms. They are a versatile and reliable choice to manage light and control glare for a wide range of manual applications.

- 2 | SHADING STRATEGY
- 3 | BENEFITS
- 5 | MANUAL SHADES





Inside cover: Reflections at Bloomington Central, Bloomington, MN
Architect: Elness Swenson Graham Architects with architects Alliance
Product: FR Roller Shades

Front cover: U.S. Citizenship and Immigration Services, Irving, TX
Architect: 4240 Architecture
Product: FR Roller Shades, and CD 60 FR Aluminum Horizontal Blinds



Hunter Douglas FR Roller Shades help create environments that are comfortable, healthy, productive, and sustainable. Our products are constructed to minimize environmental impact while meeting the highest standards for industrial, institutional, and commercial applications.

A DAYLIGHTING

Contact with the outdoors is a proven factor in employee productivity. Windows offer views and admit plenty of daylight. Roller shades manage and optimize natural daylight, helping reduce dependence on artificial lighting.

B GLARE CONTROL

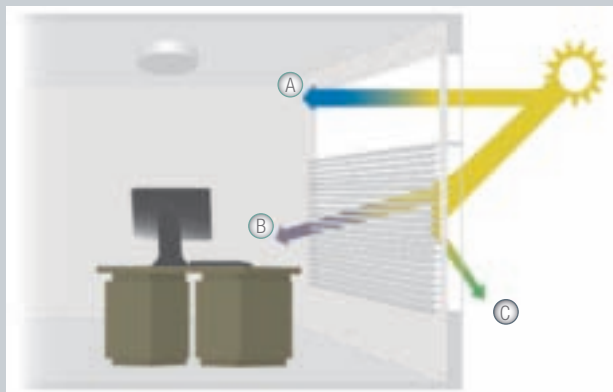
Roller shades allow employees to control the direction and amount of sunlight entering their workspace, with light-filtering fabrics that eliminate glare and reflections. Hundreds of fabric choices enable precise levels of daylight control, including 0% open fabrics for blackout applications, 1-3% open fabrics for privacy and room-darkening, and 5-10%+ open fabrics that filter glare.

C MANAGEMENT OF THERMAL GAIN

Window coverings manage heat generated by the sun: when it is hot, they can be closed to minimize solar heat gain; when cold, they can be raised to allow solar heating.

AESTHETICS

Shades filter daylight to create even, glare-free lighting levels. They also ensure privacy and can provide a consistent look from the exterior of a building.



INDOOR AIR QUALITY

Poor air quality is a common source of employee complaints. Many of our FR fabrics are certified for low emissions by the GREENGUARD Environmental Institute and passes the stricter requirements of GREENGUARD Gold, and are GREENGUARD listed for Microbial Resistance. Careful selection of low-emitting materials such as sunscreen fabrics minimizes the presence of contaminants such as volatile organic compounds (VOCs), odors, and dust.

Benefits



Our roller shades provide an excellent solution for controlling light and glare. Simple, versatile, distinctive, and cost-effective, our line includes a wide range of decorative and performance fabrics, mounted on high-quality hardware.

WIDEST RANGE OF FABRICS

Over 200 FR fabrics with choices for color, openness, and design to meet any specification.

SUPERIOR LIGHT CONTROL

Fabric options and operating systems offer solutions from light-filtering to complete blackout. Our dual shade system allows both blackout and light-filtering shades at the same window.

RELIABLE HARDWARE

Manual hardware systems engineered to meet high standards for performance and reliability.

EASY INSTALLATION

Require little mounting space, with universal brackets.

AESTHETICS

Nearly invisible when raised, shades feature a variety of fascia and valance options. Clutch operating system allows precise control to help ensure a uniform look.

SUSTAINABLE CONSTRUCTION

Most of our PVC-free and standard shading fabrics are certified for low emissions by the GREENGUARD Environmental Institute and passes the stricter requirements of GREENGUARD Gold.

SPECIALTY APPLICATIONS

Ability to provide roller shades in large expanses. Custom logo printing options available.

LIFETIME GUARANTEE

Operating Systems

Manual Clutch Operating System

Stainless steel chain hangs at the side, leaving the view unobstructed. Up and down stops prevent shades from being raised or lowered too far.

Dual Shade

Add versatility to any space by allowing two different styles of fabrics to be used on the same window (one in front of the other).

Coupled Shade

Two or more separate tube assemblies joined together by the use of mechanical couplers and operated by one drive mechanism. All shades operate in tandem.

FR Fabrics

Dark Colors	Optimize exterior views, filter glare & UV
Light Colors	Screen exterior views, manage thermal gain
Dual Colors	Reflective outward-facing surfaces reduce thermal gain, optimize exterior views
Blackout (0% openness)	Blocks light, ideal for A/V, conference, and patient rooms
Open weave (1%-14%)	Filter sunlight, preserve exterior views

Options

Fascia	Conceals shade, merging the shading system with the surrounding room. Available in 3", 4", or 7" standard sizes.
Blockout	Aluminum side and bottom channels, fitted with light-blocking wool pile prevent light leakage around edges and bottom of shade. Ideal for room-darkening and A/V applications.
Pocket	Integrates shading into the ceiling plane. Prefabricated surface and ceiling pockets available.
Additional	Color-coordinated trims, 4 clutch sizes, banded shades, reverse roll, top and bottom covers, sealed pocket hem bar, extruded pockets.



Manual Shades

Hunter Douglas Architectural manual shades are a versatile and reliable choice for managing light, enhancing a building's energy efficiency, and controlling glare. Our manual shade hardware was engineered to lead the industry.



Manual Shade Options

Bead Chain Clutch Operating System

- Pulley clutch operating system allows precise control for smooth operation of shade
- Compact bi-directional gear assembly mounted on the right side (standard) or left
- Requires no adjustments over lifetime of system
- Friction-free operation reduces component wear and increases product life

Dual Manual Shade

- Two operating mechanisms on one bracket for an integrated look
- Unlimited number of combinations for different shade materials
- Chain drive can be on same side or opposite side

Manual Shade With Fascia

- Conceals shade mechanism from front and sides
- Available in 3", 4", or 7" standard sizes
- Color options: anodized aluminum finish or painted white, vanilla, bronze, or black
- Optional top and back cover

Manual Shade With Blockout System

- Aluminum side and bottom channels, fitted with light-blocking wool pile
- Color options: anodized aluminum finish or painted white, vanilla, bronze, or black
- No light gaps at fascia/side channel connection
- Light-proof hem bar recessed into light-proof side channel

Manual Shade With Extruded Pocket

- Streamlined integration into the ceiling for concealment of shades
- Available for standard dual roller shades
- Prefabricated designs available in surface or ceiling mount
- Available in 5.25" and 9"
- Tile support to seam with the ceiling grid
- Optional end caps and closure mounts



Reflections at Bloomington Central



U.S. Citizenship & Immigration Services

ABOUT HUNTER DOUGLAS

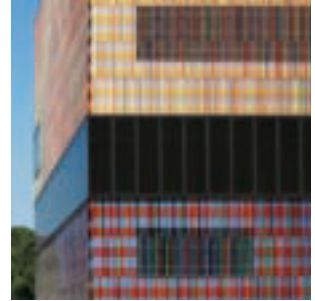
For more than 60 years, we have been fortunate enough to help turn countless innovative sketches into innovative buildings. Architects and designers from around the world have taken advantage of Hunter Douglas' unmatched project development, service, and support. Chances are, you've seen more of Hunter Douglas than you think. Just look around. With major operation centers in North America, Europe, Latin America, Asia and Australia, we have contributed to thousands of high-profile installations, from retail and commercial facilities to major transit centers and government buildings. Not only are the world's architects and designers our partners, they're our inspiration. As they continue to raise the bar for excellence, we are creating projects to bring their visions to life.

FOR MORE INFORMATION

- 800.727.8953
- HDarchitectural.com

HunterDouglas

Architectural



Hunter Douglas Architectural
13915 Danielson Street, Poway, CA 92064
Customer Service: 800.727.8953
Fax: 800.205.9819
HDarchitectural.com

©2016 Hunter Douglas Inc.® and ™ is a trademark of Hunter Douglas Inc.
The GREENGUARD INDOOR AIR QUALITY CERTIFIED mark is a registered certification
mark used under license through the GREENGUARD Environmental Institute.