

# FR Skyline® Gliding Window Panels



FR Skyline® Gliding Window Panels traverse horizontally across the window on a slim track. This innovative system features a smooth, reliable mechanism and a selection of sophisticated shading fabrics.

## KEY FEATURES

- Patented dual-channel, single track covers widths up to 384" and drops as tall as 168", standard and motorized units available
- Most fabrics are GREENGUARD Gold certified for low-emitting products
- Fabrics meet all requirements of NFPA 701 small scale flammability testing for commercial applications
- Color-coordinated hardware
- Multiple designer top treatment options available
- Interlocking bottom-weight increases panel stability and eliminates tangling
- Lifetime Guarantee



### (0% Openness) Flocke



Blanc



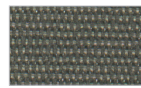
Sahel



Mississippi

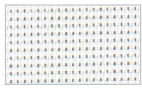


Chartreux

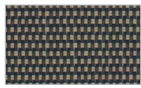


Loutre

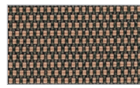
### (5% Openness) Exotic Hues



Patagonian  
Glacier

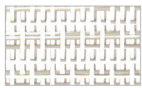


Chamorro  
Coconut



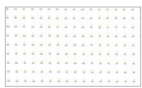
Palmira Teak

### (10% Openness) Bamboo

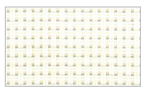


Birch

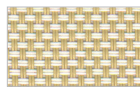
### (10% Openness) New Orleans



Riverboat White



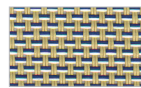
Magnolia



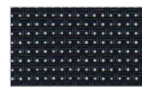
Chicory



Dijon

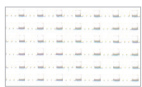


Vanilla Belle

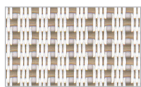


Wrought Iron

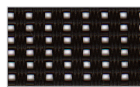
### (14% Openness) Sheerweave 3000



White

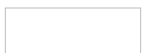


Sand

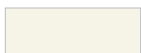


Chocolate

### Hardware Colors



White Tiara



Rich Cream



Duchess Gray



Nickel



Desert Gold



Gold



Desert Tan

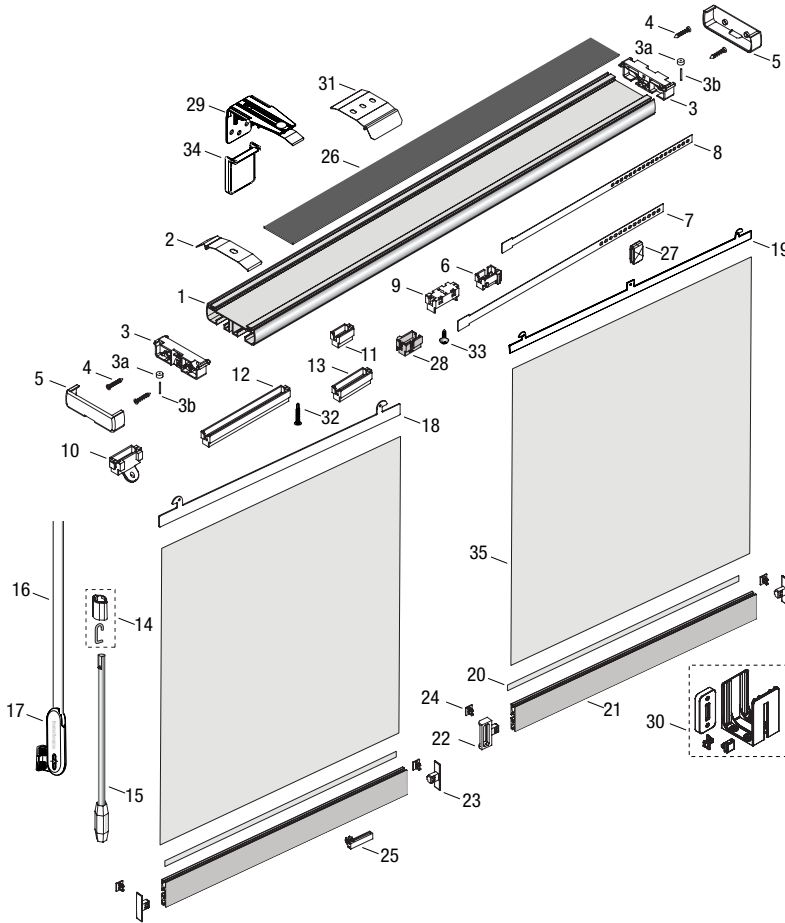


Bronze



Black

**HunterDouglas**   
Architectural



**STANDARD COMPONENTS:**

- |                                 |  |
|---------------------------------|--|
| 1. Headrail (2½" X ¾")          | 19. 17" Fabric Hanger                    |
| 2. Mounting Clip                | 20. Bottom Weight Mounting Strip         |
| 3. End Cap                      | 21. Bottom Weight                        |
| a. Cord Wheel                   | 22. Snap Slide End Cap                   |
| b. Axle                         | 23. Bottom Weight End Cap                |
| 4. End Cap Screw                | 24. End Cap Pin                          |
| 5. Outside End Cap              | 25. Snap Slide                           |
| 6. Right Facing Carrier (white) | 26. Sound Deadening Material             |
| 7. 17" Carrier Spacer Link      | 27. 17" Fabric Hanger Center Support Cap |
| 8. 11½" Carrier Spacer Link     | 28. Left Facing Carrier (Grey)           |
| 9. Cord Driver                  | 29. 3½" L Bracket w/Clip                 |
| 10. Wand Driver                 | 30. Room Divider Kit                     |
| 11. Small Spacer                | 31. Headrail Splicer Clip                |
| 12. Big Spacer                  | 32. Carrier Locking Screw                |
| 13. Medium Spacer               | 33. Cord Lock Screw                      |
| 14. Wand Sleeve                 | 34. Bracket Cover                        |
| 15. Wand Assembly               | 35. Panel Fabric                         |
| 16. Traverse Cord               |  |
| 17. Universal Cord Tensioner    |  |
| 18. 11½" Fabric Hanger          |  |

## PRODUCT SPECIFICATIONS

### PART 2 – PRODUCTS

#### 2.01 ACCEPTABLE MANUFACTURER

- A. Hunter Douglas Architectural / 13915 Danielson St., Ste.100/ Poway, CA 92064 / Phone: 800-727-8953 / Fax: 800-205-9819 / Website: HDarchitectural.com or architect approved equivalent.
- B. Product substitutions must be approved by architect minimum of 30 days prior to close of bid.

#### 2.02 PANEL TRACK SYSTEMS

- A. **PRODUCT:** Hunter Douglas "Skyline® FR Gliding Window Panels"
- B. **MATERIALS:**
  - 1. **FABRICS:** Inherently anti-static, flame retardant, fade and stain resistant fabrics providing 0% - 14% openness factors. Fabric weights to range between 11.79 oz/sq.yd. – 14.60 oz/sq.yd. containing fiberglass, PVC, polyester, & vinyl coatings. Finish selected by architect from manufacturer's available contract colors. Panel widths available in 11 ½" and 17".
  - 2. **CHANNEL:** Patented anodized aluminum dual channel single track system measuring 2 ½" X ¾". Internally fit with components required for specified performance and designed for smooth, quiet, trouble-free operation.
  - 3. **TRAVERSING:** Stretch resistant, non-fraying, and lint-free lock knit polyester cord provides traversing capabilities for left, right, and split stack draws. Single wand or dual wand control (for split stack units) or PowerView™ Motorization available.

- 4. **BOTTOM WEIGHT:** Powder coated color-coordinated aluminum interlocking bottom weight provides panel stability and alleviates panel tangling.
- C. **MOUNTING HARDWARE:** Manufacturer's standard L- bracket with clip (outside mounts) and clip only (inside mounts) provide required support. OB brackets are color-coordinated to hardware on shade; IB/CB brackets are not visible once shade is mounted.
- D. **ADDITIONAL AVAILABLE OPTIONS:** Top treatment options – sleek metal valance, or box valance for room dividers, or fabric wrapped large cassette.

#### 2.03 FABRICATION

- A. Shade measurements shall be accurate to within + 1/8" or as recommended in writing by manufacturer.

#### 2.04 FABRICS

- A. **FABRIC** selection from the following: (0% Openness) Flocke: Blanc, Sahel, Mississippi, Chartreux, Loutre, Encre. (5% Openness) Exotic Hues: Patagonian Glacier, Chamorro Coconut, Palmira Teak. (10% Openness) Bamboo: Birch. (10% Openness) New Orleans: Riverboat White, Magnolia, Chicory, Dijon, Vanilla Belle, Wrought Iron. (14% Openness) SheerWeave 3000: White, Sand, Chocolate.

#### 2.05 FINISHES

- A. **HARDWARE** finish selection from the following: Bronze 064, Dusty Green 204, Gold 235, Desert Gold 907, Rich Cream 320, White Tiara 661, Desert Tan 859, Duchess Gray 651, Nickel 307, Black 048