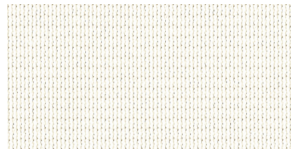


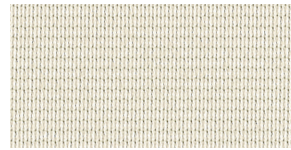
GreenScreen Revive HD2501 | 1% openness



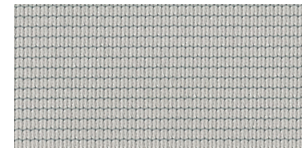
WHITE



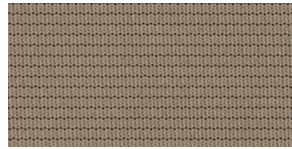
SAND



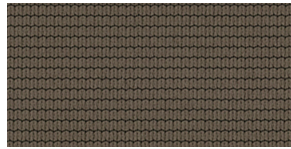
LINEN



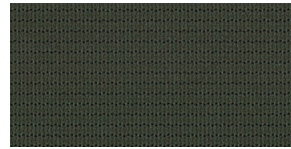
STONE



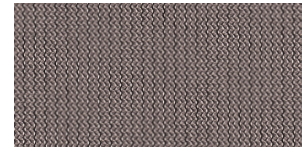
MUSHROOM



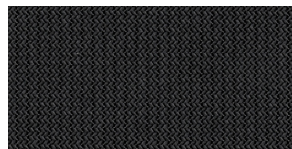
SUEDE



DUSK



PEWTER



ONYX



Specifications

MAX. FABRIC WIDTH: 118"
ROLL LENGTH: 50 yd
FABRIC WEIGHT: 5.87 oz/yd²
FABRIC THICKNESS: 0.019"
OPENNESS FACTOR: 1%

COMPOSITION: 100% Polyester (PVC free)
89% Recycled Content
UV BLOCKAGE: Approximately 99%
FIRE CLASSIFICATION: NFPA 701-04 TM#1,
California U.S. Title 19

	SOLAR OPTICAL PROPERTIES				SHGC/G VALUE	
COLOR	TS	RS	AS	TV	CL-S	DG
WHITE	28	66	6	27	0.36	0.36
SAND	26	61	13	23	0.39	0.37
LINEN	25	58	17	20	0.41	0.38
STONE	24	52	24	17	0.44	0.40
MUSHROOM	20	46	34	10	0.47	0.42
SUEDE	19	39	42	7	0.51	0.44
DUSK	14	36	50	2	0.52	0.45
PEWTER	19	43	38	8	0.49	0.43
ONYX	17	34	49	5	0.54	0.46

TS Solar Transmittance
RS Solar Reflectance
AS Solar Absorptance
TV Visual Transmittance

SHGC Solar Heat Gain Coefficient
CL-S 4mm Clear Glass, Single Glazing
DG Double Glazing, 4mm/16mm/4mm
with low E-coating in position 3,
space filled with Argon

- The Solar Optical Properties are used to calculate the Solar Heat Gain Coefficient.
- The Solar Heat Gain Coefficient represents the percentage of solar energy directly transmitted and re-radiated to the inside through the glazing system.