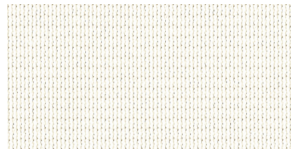


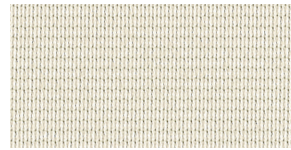
GreenScreen Revive HD2505 | 5% openness



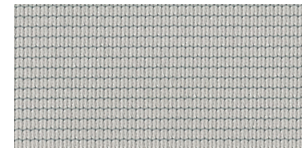
WHITE



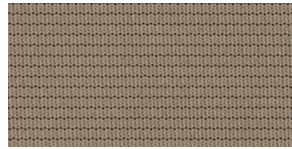
SAND



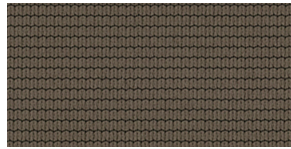
LINEN



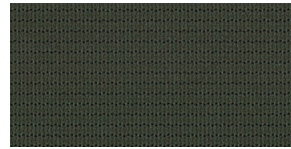
STONE



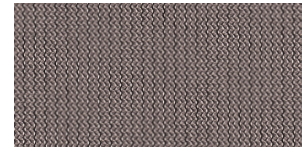
MUSHROOM



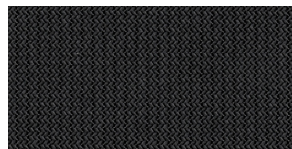
SUEDE



DUSK



PEWTER



ONYX



Specifications

MAX. FABRIC WIDTH: 118"
 ROLL LENGTH: 50 yd
 FABRIC WEIGHT: 5.01 oz/yd²
 FABRIC THICKNESS: 0.017"
 OPENNESS FACTOR: 5%

COMPOSITION: 100% Polyester (PVC free)
 89% Recycled Content
 UV BLOCKAGE: Approximately 95%
 FIRE CLASSIFICATION: NFPA 701-04 TM#1,
 California U.S. Title 19

	SOLAR OPTICAL PROPERTIES				SHGC/G VALUE	
COLOR	TS	RS	AS	TV	CL-S	DG
WHITE	38	56	6	37	0.44	0.39
SAND	35	54	11	33	0.44	0.40
LINEN	32	52	16	28	0.45	0.41
STONE	27	49	24	20	0.46	0.41
MUSHROOM	27	42	31	18	0.50	0.44
SUEDE	25	35	40	13	0.54	0.46
DUSK	22	31	47	8	0.56	0.47
PEWTER	26	37	37	14	0.53	0.45
ONYX	22	31	47	9	0.56	0.47

TS Solar Transmittance
RS Solar Reflectance
AS Solar Absorptance
TV Visual Transmittance

SHGC Solar Heat Gain Coefficient
CL-S 4mm Clear Glass, Single Glazing
DG Double Glazing, 4mm/16mm/4mm
 with low E-coating in position 3,
 space filled with Argon

- The Solar Optical Properties are used to calculate the Solar Heat Gain Coefficient.
- The Solar Heat Gain Coefficient represents the percentage of solar energy directly transmitted and re-radiated to the inside through the glazing system.