

# GlacierScreen+

---

1% / 3% / 5% / 10%

**HunterDouglas**   
Architectural

## Product Certificate

<b>Fire, Smoke Classification</b>	FR (US) - NFPA 701 TM#1 B1(CN) - GB50222	BS (GB) - 5867 Part2 TypeB
<b>Health &amp; Safety</b>	Oeko-tex Standard 100 class IV RoHS Directive (EU)2015/863 AATCC112-2014	Greenguard® Gold EN71 Part 3:1994 GB18586 - 2001
<b>Bacterial &amp; Fungal Resistance</b>	ASTM G21-09 ASTM E 2180-07 Reduce more than 99.9% of bacteria	
<b>Colour fastness to light</b>	Grade 8 ISO105 B02:2014 ≥4.0 AATCC TM 16.3-2014; Option 3; Xenon Arc Lamp	
<b>Warranty</b>	10 Years	



## Technical Data

STYLE		1%	3%	5%	10%
<b>Composition</b>		25%Polyester 75% PVC	25%Polyester 75% PVC	25%Polyester 75% PVC	25%Polyester 75% PVC
<b>Openness Factor</b>		≈1%	≈3%	≈5%	≈10%
<b>UV Screen</b>		Up to 99%	Up to 97%	Up to 94%	Up to 89%
<b>Width</b>	inch	118"	118"	118"	118"
	cm	300	300	300	300
<b>Weight</b>	oz/yd <sup>2</sup>	14.17±5%	13.67 ± 5%	12.35 ± 5%	11.17±5%
(ISO 2286-2)	g/m <sup>2</sup>	482 ± 5%	465 ± 5%	420 ± 5%	380 ± 5%
<b>Thickness</b>	inch	0.028 ± 5%	0.026 ± 5%	0.024 ± 5%	0.023 ± 5%
(ISO 2286-3)	mm	0.72 ± 5%	0.65 ± 5%	0.62 ± 5%	0.58 ± 5%
<b>Mechanical</b>	<b>Resistance</b>				
<b>Breaking</b>	Warp	≥1900 N/5cm	≥1850 N/5cm	≥1550 N/5cm	≥1400 N/5cm
(ISO 13934-1)	Weft	≥1200 N/5cm	≥1400 N/5cm	≥1400 N/5cm	≥1300 N/5cm
<b>Tear</b>	Warp	≥110 N	≥135 N	≥125 N	≥128 N
(ISO 4674)	Weft	≥ 90 N	≥105 N	≥110 N	≥120 N
<b>Packing</b>		32.8 yards	32.8 yards	32.8 yards	32.8 yards
(Roll Length)		30 lm	30 lm	30 lm	30 lm

## Thermal and Optical Factors

Color	Fabric Properties					Fabric & Glass	
	Thermal			Optical		SHGC % Improvement	SHGC
	Ts	Rs	As	Rv	Tv		

Recommended Comfort Classification				
Thermal Control	Visual			
	Daylight Utilization	Glare Control	Night Privacy	Outward Visibility

### GlacierScreen+ 1%

White*White	16	72	12	74	13	56%	0.21
White*Linen	17	65	18	68	13	53%	0.23
White*Pearl	17	60	23	62	14	47%	0.24
White*Grey	8	45	47	50	5	40%	0.25
White*Sand	12	55	33	59	8	46%	0.23
Black*Pearl	0	11	89	12	0	18%	0.34
Black*Black	0	3	97	3	0	13%	0.36
Black*Grey	0	8	92	8	0	16%	0.35
Black*Brown	1	5	94	5	1	14%	0.35

2	2	1	2	1
2	2	1	2	1
2	2	1	2	1
2	1	2	2	1
2	1	2	2	1
2	0	3	3	1
1	0	3	3	1
1	0	3	3	1
1	0	3	3	1

### GlacierScreen+ 3%

White*White	18	70	12	72	15	54%	0.23
White*Linen	15	59	26	63	11	48%	0.24
White*Pearl	14	52	34	57	11	44%	0.25
White*Grey	9	40	51	44	7	36%	0.27
White*Sand	14	51	35	54	10	42%	0.26
Black*Pearl	4	13	83	15	4	19%	0.34
Black*Black	3	3	94	3	3	13%	0.37
Black*Grey	3	9	88	10	3	16%	0.35
Black*Brown	3	6	91	6	3	14%	0.36

2	2	1	2	1
2	2	1	2	1
2	2	1	2	1
2	1	1	2	1
2	1	1	2	1
2	1	3	2	2
1	1	3	2	2
1	1	3	2	2
1	1	3	2	2

### GlacierScreen+ 5%

White*White	21	67	12	69	17	51%	0.25
White*Linen	18	56	26	60	14	46%	0.25
White*Pearl	16	49	35	54	13	41%	0.27
White*Grey	12	38	50	40	9	33%	0.30
White*Sand	14	46	40	50	12	40%	0.28
Black*Pearl	8	15	77	17	8	19%	0.35
Black*Black	6	3	91	3	3	11%	0.37
Black*Grey	7	3	90	3	7	12%	0.38
Black*Brown	7	6	87	6	7	14%	0.38

2	2	0	1	1
2	2	0	1	1
2	2	0	1	2
2	1	0	1	2
2	1	0	1	2
1	1	1	1	3
1	1	1	1	3
1	1	1	1	3
1	1	1	1	3

### GlacierScreen+ 10%

White*White	21	61	18	60	17	45%	0.26
White*Linen	18	56	26	60	14	45%	0.26
White*Pearl	16	49	35	54	13	41%	0.27
White*Grey	18	36	46	38	15	31%	0.33
White*Sand	18	48	34	23	12	40%	0.30
Black*Pearl	12	17	71	19	10	18%	0.35
Black*Black	10	3	87	3	6	10%	0.37
Black*Grey	11	4	85	5	10	11%	0.38
Black*Brown	11	5	84	8	10	13%	0.38

2	2	0	0	2
2	2	0	1	2
2	2	0	1	2
2	2	0	1	3
2	2	0	1	3
1	1	1	1	3
1	1	1	1	3
1	1	1	1	3
1	1	1	1	3

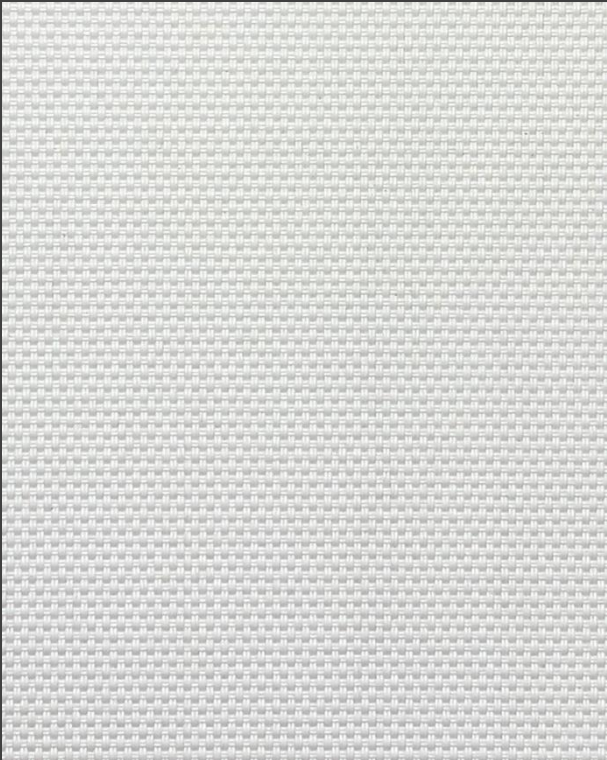
Ts (Solar transmittance): Proportion of solar energy transmitted through the fabric. Rs (Solar reflectance): Proportion of solar radiation reflected by the fabric. As (Solar absorptance): Proportion of solar radiation absorbed by the fabric. Tv (Visible light transmittance): Total percentage of light radiation through the fabric over a wavelength of 380 to 780 nm. Rv (visible light reflectance): Total percentage of light radiation reflected by the fabric over a wavelength of 380 to 780 nm. SHGC (Total solar factor): Solar energy which actually penetrates into a room through the blind and glazing. A low value means good thermal performance.

Comfort Classification According to EN14501 : 0. Very little effect 1. Little effect 2. Moderate effect 3. Good effect 4. Very good effect



Openness Factor

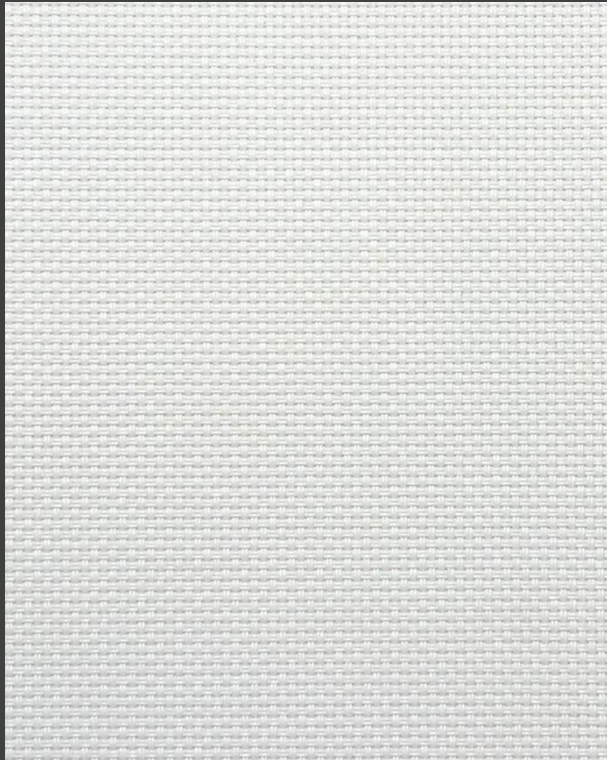
White \* White



GlacierScreen+ 1%



GlacierScreen+ 3%



GlacierScreen+ 5%



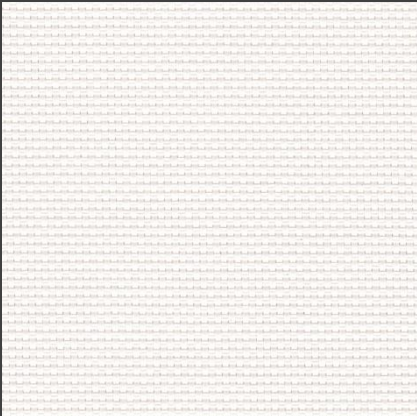
GlacierScreen+ 10%

\* Openness Factor may be slightly different from the actual ones

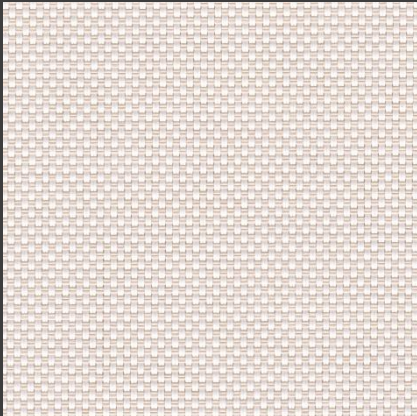


**Performance Classification**

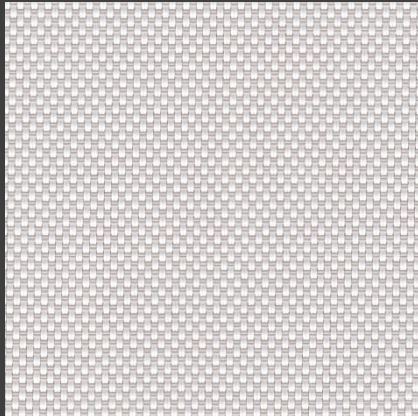
GlacierScreen+ 3%



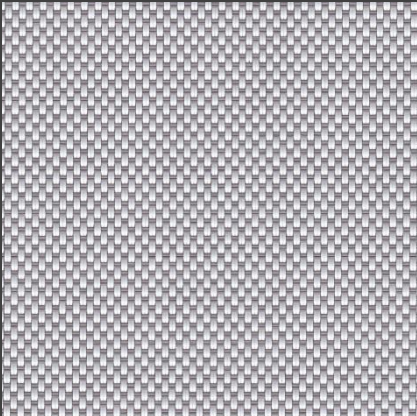
White \* White



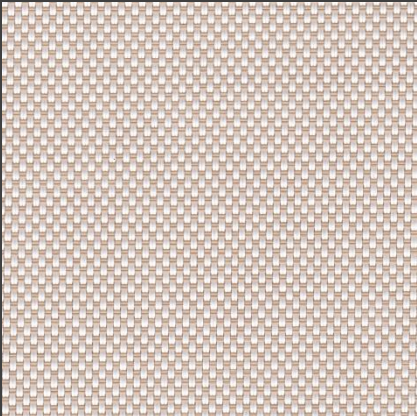
White \* Linen



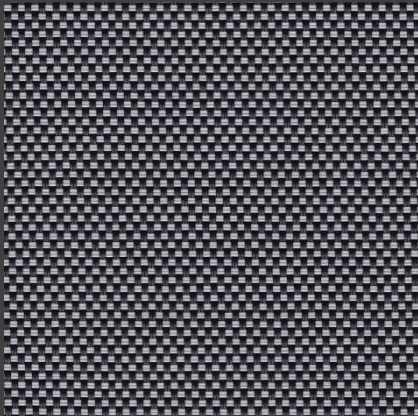
White \* Pearl



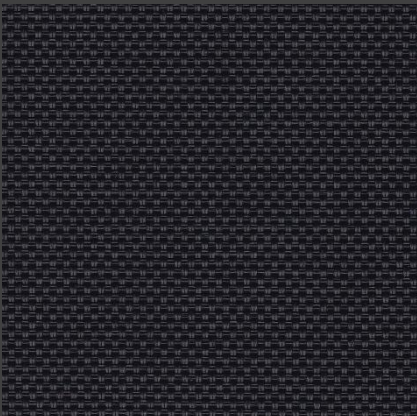
White \* Grey



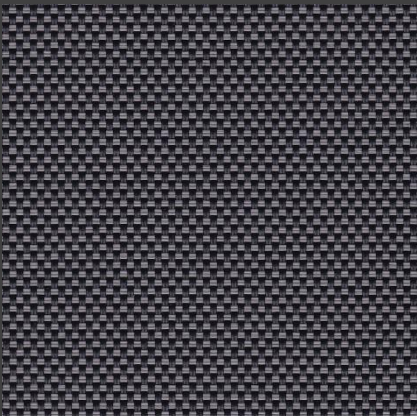
White \* Sand



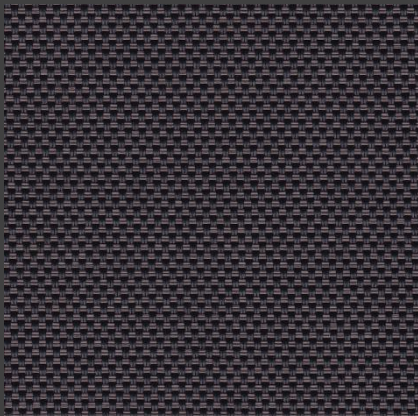
Black \* Pearl



Black \* Black



Black \* Grey



Black \* Brown

\* Colours may be slightly different from the actual ones

The fenestration data provided above are derived from information provided by Hunter Douglas' vendors and/or testing conducted by Hunter Douglas or its vendors. Test methods used are intended to demonstrate the qualities and performance of the specific fabric samples tested, and the data may not reflect or predict the qualities or performance of the fabrics under actual conditions. In addition, tests may not have been conducted by certified or governmentally approved testing facilities and, accordingly, the results may vary from those that would be obtained at such certified or approved facilities. Hunter Douglas assumes no liability to its customer or any other person or entity whatsoever arising out of any loss or damage suffered or sustained, or for any amounts required to be paid, as a result of the performance (or nonperformance) of the fabric under actual conditions.

Hunter Douglas Architectural

Window Coverings

800.727.8953 • HDarchitectural.com

hdcustomerservice@hunterdouglas.com

© 2018, Hunter Douglas. All rights reserved

VII

**HunterDouglas**   
Architectural