

Individual Group Control (IGC) 4N1 Motor Controller



Item #: 1811416

OVERVIEW:

The Individual Group Control (IGC) 4n1 Motor Controller provides individual and group control for up to four Somfy® Wired Technology (WT) motors with up to three intermediate positions per motor. Through the use of the DecoFlex Dry Contact Keypad (#1811402, required), users can access 3 preset positions as well as Up, Down and Stop. Keypads can also be used to set custom intermediate positions. Multiple IGC 4n1 Motor Controllers can be daisy-chained together for simplified synchronized control from a single keypad. The IGC 4n1 Motor Controller doesn't set upper and lower motor limits, but senses the current to identify them.



NOTE: If power is lost or turned off, all motors will move to their upper limit when power is reapplied.

TECHNICAL SPECIFICATIONS:

- Line Voltage Input: 120V AC +/- 10%; 50 – 60Hz
- Low Voltage Output to Switches: 12V DC 185 mA maximum consumption
- Output to Motor: 120V AC (5A per motor) ¼ HP
- Fuses: 5x5A (1 for each motor, 1 for the board)
- Dimensions: H 12" x W 10" x D 4"
- Materials: Steel
- Mounting: On wall
- Shipping Weight: 10 Lbs

FEATURES SUMMARY:

- Control up to four WT motors individually or in groups.
- Provides default intermediate positions of 25%, 50%, and 75% openness which can also be customized for each motor.
- Individual control and master control using multiple control options including keypads, remotes and integration methods.
- Four keypad ports and two master ports.
- UL certified E160923.

ACCESSORIES:

- DecoFlex Dry Contact Keypad (1811402)
- IGC RTS Receiver (1811492)

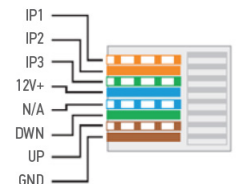
MOTOR PINOUT:

- Direction 1 (Black)
- Direction 2 (Red)
- Neutral (White)
- Ground (Green)

Notes:
 D1 is Up Direction
 D2 is Down Direction
 Stop is up and down connections shorted to ground at the same time.

CABLE PINOUT:

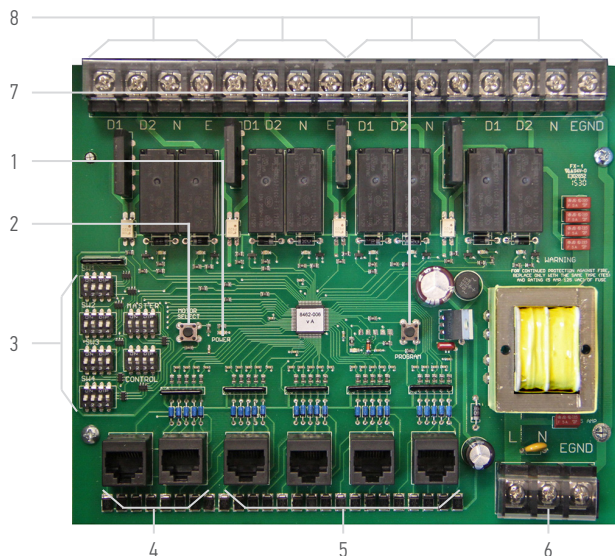
CAT-5e or higher TIA-568B standard with RJ-45



COMPATIBLE WITH:

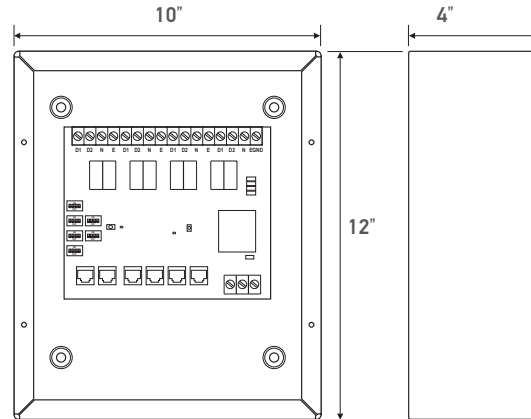
- AC wired motors: 400, 500 and 600 series.

CONNECTIONS AND INDICATORS:



ELEMENT	FUNCTION
1 Power LED	Indicates power is on
2 Motor Select Button	Saves settings of the DIP switches
3 DIP Switches	Motor selection
4 Master Ports	Master assigns usage of motors from master ports
5 Individual Motor Keypad Ports	Connect keypads for each group of motors
6 To 120V AC	Connect to power
7 Program Button	Calculate motor run time for intermediate positions
8 To Motors	Connect to motors

DIMENSIONS:



BEST WIRING PRACTICES

A standard category cable (CAT-5 or higher) terminated to TIA-568B standard must be used. The diagram shown below is meant for illustrative purposes to show the connections from product to product. This device can be used in other configurations than shown below.

NOTES:

- Integration is via DCT controls by connecting corresponding wires above from the desired control port to a third-party controlled relay
- STOP command is triggered by activating the UP and DOWN simultaneously
- Max distance for dry contact connectivity using CAT-5e is 300'

