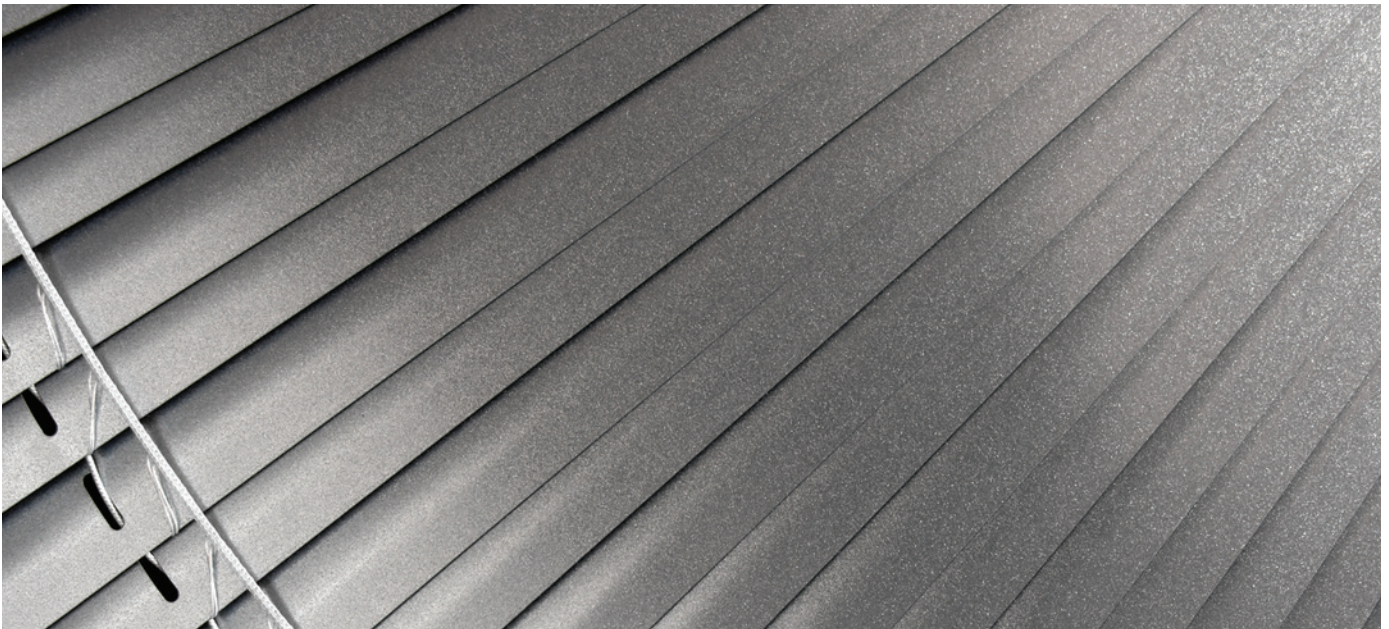


LEVOLOR®

COMMERCIAL

Metal Blinds



Product Guide

HunterDouglas 
Architectural



COMMITTED to safety!

Child Safety Is Serious Business.



That's why the window coverings industry uses warning tags, warning labels, and other methods to communicate the potential hazards of corded window coverings. The warning shown here, for example, communicates the important message about cords being a potential strangulation hazard and suggests choosing cordless alternatives or products with inaccessible cords.



Our window covering products are designed for safety and dependability. Preventing situations from becoming hazardous is the first step to keeping your child safe. Please be aware that it is possible for children to become entangled in window covering cords. To reduce the risk of accidents, all cords should be kept out of the reach of children. Our product categories offer a variety of motorized, cordless and corded window treatments allowing you to choose the product that best meets your needs and preferences.

We encourage you to learn more about window covering safety by visiting www.windowcoverings.org for important cord safety guidelines.

METAL BLINDS

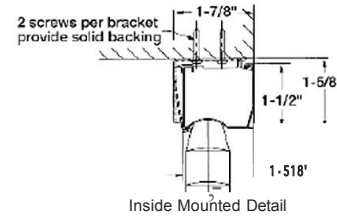
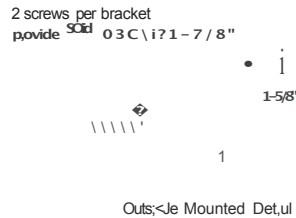
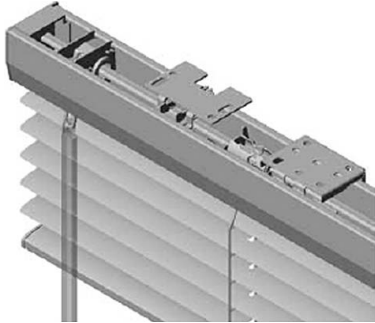
MARK I COLLECTION (integrated headrail and concealed mounting bracket)

Mark I 1-3/8"

Available Cordless (MARK 138C)
Available with Traditional Lift System (MARK 138)

Mark I 1"

Available Cordless with LightMaster™ (MARK ICP)
Available with LightMaster™ (MARK IP)
Available Cordless - Standard Route Holes (MARKIC)
Available with Traditional Lift System (MARKI)

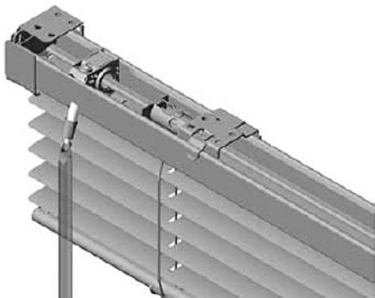


Note: Headrail and brackets are the same for both Mark I 1-3/8" and Mark I 1" products.

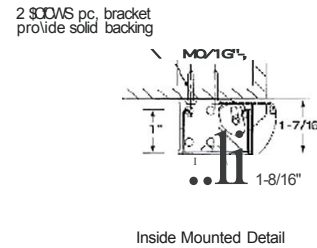
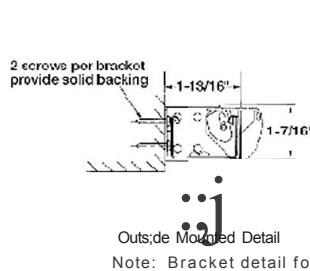
RIVIERA COLLECTION (box bracket collection)

Riviera Classic I" (RIVI)
Riviera Classic I" LightMaster™ (RIVIP)
Riviera I" Contract (RIVIC)

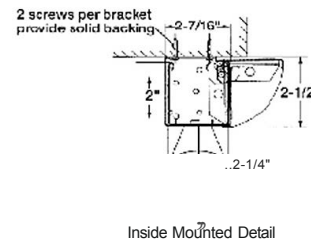
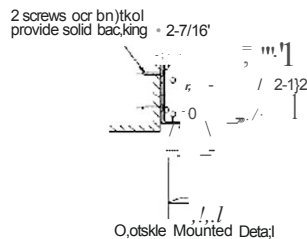
Riviera 2" (RIV2)
Riviera 1/2" (RIV12)



Model Shown: Riviera Classic I"



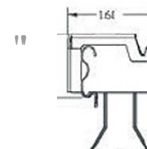
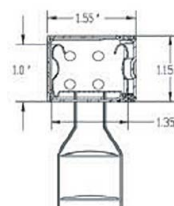
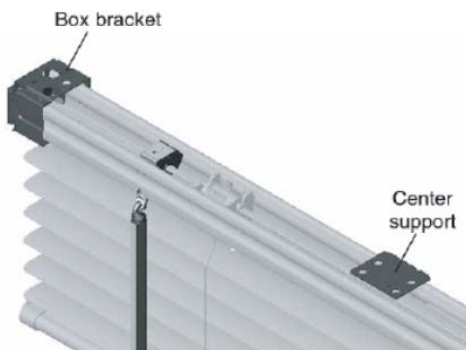
Note: Bracket detail for RIVI, RIVIP, RIVIC



Note: Bracket detail for RIV2

MONACO® 6 COLLECTION (available with box brackets or concealed brackets)

Monaco® 6 LightMaster™ (MON6P)
Monaco® 6 Traditional Route Holes (MON6)



BLIND OPTIONS

Option	Mark I 1"	Mark I 1-3/8"	Riviera® 1" Classic	Riviera® Contract Monaco® 6	Riviera® 1/2"	Riviera® 2"
Cordless	0	0				
Cord C90 (Thick)						0
Cord Cleat	0	0	0	0	0	0
Cord Tilt						0
Cut-Outs (Traditional Route Holes Only)	0	0	0	0	0	0
End Mount Brackets			S	S	S	S
Extension Brackets	0	0	0	0	0	0
Fabric Twill or Vinyl Tapes						0
Guardian Tilter	S	S	S	S	S	
Hold-Down Brackets	0	0	0	0	0	0
Integrated Valance	S	S				
LightMaster™	0		0			
Multiple Blinds on One Headrail	0	0	0	0	0	0
Pivot Plate			0	0	0	
Pocket Bracket			0	0	0	0
Restrictive Tilter	0	0	0	0	0	
Ring Pull	0	0	0	0	0	0
SheerView Perforated	0		0			
Side-by-Side	0	0	0	0	0	0
Telescopic Pole/Skylight Pole	0	0	0	0	0	0
Tilt Wand	S	S	S	S	S	S
Tiltone Colors	0	0	0			
Top Lok® Cord Lock	0	0	0	0	0	
Vogue Valance - Contract			0	0	0	0

KEY:

- o option
- s standard
- not available

HOW TO MEASURE / MINIMUM MOUNTING DEPTH

Inside Mount (IM) Installation

To find width: Measure exact distance to the nearest 1/8" between inside surfaces of window frame at the top, middle, and bottom, and use the narrowest width. Do not make any width deductions. Factory will make appropriate deductions.

To find height: Measure exact distance to the nearest 1/8" from inside surface at top of window to sill at the left, middle and right and use the longest height. If you prefer blind not to touch sill, deduct 1/4". If there is no sill, measure height to the point where the shade reaches.

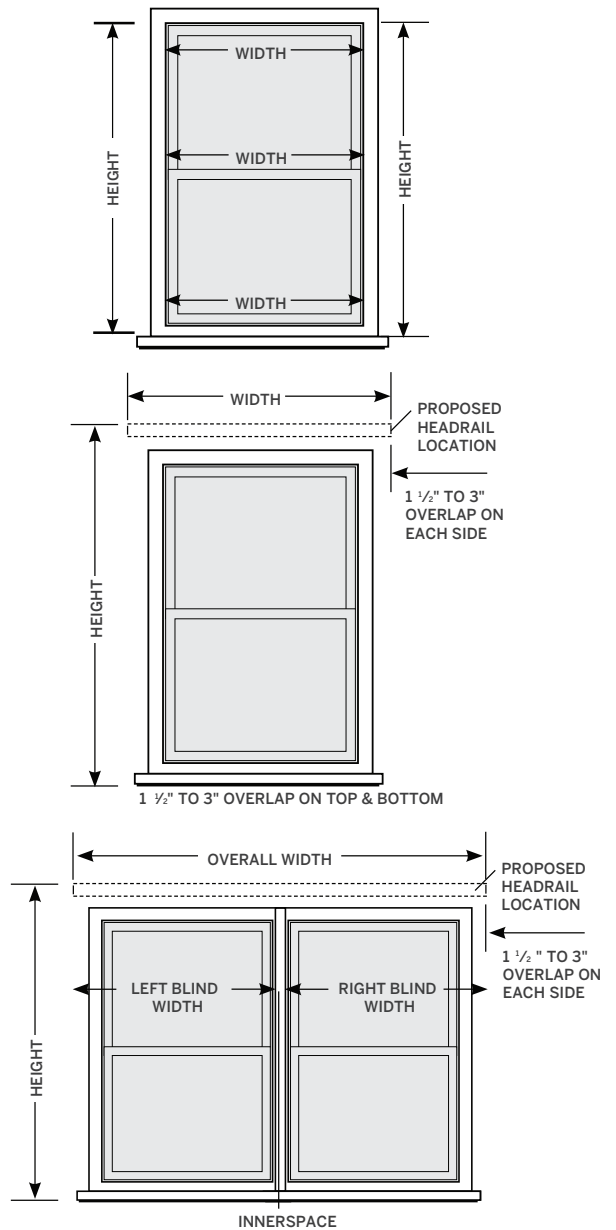
Outside Mount (OM) Installation

To find width: Measure exact distance to the nearest 1/8" between the outermost points where the blind is to be placed. For optimal light control, this measurement should extend 3/4" beyond the window opening on each side (or 1-1/2" for the entire width).

To find height: Measure exact distance to the nearest 1/8" from where top of the blind will be located to the top of sill. If there is no sill or if blind is to overlap window frame, measure to the point the shade reaches.

2-on-1 and 3-on-1 Headrail

1. Measure overall width of the area to be covered.
2. Measure width of the area each blind is to cover. Measure and specify the left shade first, continuing to the right. Factory will allow a minimum of 1/2" between shades for operating clearance.
3. The total width of all shades must equal the total headrail width. If ordering a valance wider than the blind, a diagram is required.
4. To measure height, use standard inside or outside measuring



COLOR INDEX

Color #	Description	*Mark I 1" Riviera® Classic 1"	**Mark I 1 3/8"	Riviera® Contract 1"	Riviera® 2"	Riviera® 1/2"
Solid Finishes						
110	White	■	■	■	■	■
111	Cotton	■	■	■	■	■
112	Alabaster	■	■	■	■	■
113	White Cap	■	■	■	■	■
115	Dover	■	■	■	■	■
116	Polar Bear	■	■	■	■	■
137	Almond	■	■	■	■	■
148	Vanilla	■	■	■	■	■
201	Ivory	■	■	■	■	■
202	Blush White	■	■	■	■	■
268	Real Red	■	■	■	■	■
275	Garnet Red	■	■	■	■	■
292	Gingersnap	■	■	■	■	■
310	Sand	■	■	■	■	■
312	Greige	■	■	■	■	■
316	Malibu Sand	■	■	■	■	■
365	Mushroom	■	■	■	■	■
368	Beacon Brown	■	■	■	■	■
384	Rich Earth	■	■	■	■	■
571	Cactus Sage	■	■	■	■	■
590	Sherwood Green	■	■	■	■	■
637	China Blue	■	■	■	■	■
641	Evening Shadows	■	■	■	■	■
685	Royal Navy	■	■	■	■	■
765	Wood Violet	■	■	■	■	■
815	Birch	■	■	■	■	■
820	Squirrel Gray	■	■	■	■	■
860	Mercury	■	■	■	■	■
862	Pearl Gray	■	■	■	■	■
870	U.N. Gray	■	■	■	■	■
885	Dark Bronze	■	■	■	■	■
887	Raw Umber	■	■	■	■	■
890	Black	■	■	■	■	■
892	Low Gloss Black	■	■	■	■	■
Pearlescence Finishes						
1388	Vapor	■	■	■	■	■
1389	Golden Mist	■	■	■	■	■
Opulescence Finishes						
1392	Quartz White	■	■	■	■	■
1393	Glazed Bisque	■	■	■	■	■
Metallic Finishes						
31	Satin Nickel	■	■	■	■	■
34	Brushed Aluminum	■	■	■	■	■
915	Copperite	■	■	■	■	■
968	Ash Bronze	■	■	■	■	■
1440	Cityscape	■	■	■	■	■
1441	Galleria	■	■	■	■	■
1443	Brass	■	■	■	■	■
Tiltone						
5885	Dark Bronze/Dover	■	■	■	■	■
SheerView (Available with Cordless Mark I, Mark I, Riviera Classic 1")						
34	Brushed Aluminum	■	■	■	■	■
110	White	■	■	■	■	■
112	Alabaster	■	■	■	■	■
885	Dark Bronze	■	■	■	■	■
892	Low Gloss Black	■	■	■	■	■

* Includes: Cordless Mark I LightMaster™, Mark I LightMaster™, Cordless Mark I, Mark I, Riviera Classic 1" LightMaster™, Riviera Classic 1",

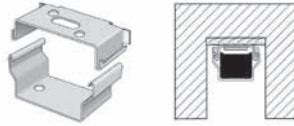
**Includes: Cordless Mark 1 1", Mark I 1 3/8"

SPECIFICATIONS	Mark I	Mark I	Riviera®	Riviera®	Riviera® 1/2"		Riviera® 2"	
	1 3/8"	1"	Classic 1"	Contract 1"	Inside Mount	Outside Mount	Inside Mount	Outside Mount
Minimum Ordered Width	Inside Mount	Outside Mount	Inside Mount	Outside Mount	Inside Mount	Outside Mount	Inside Mount	Outside Mount
Cordless	17	16 5/8	n/a	n/a	n/a	n/a	n/a	n/a
Tilt & Lift Same Side Shade	15 3/4	15 1/2	15 1/2	15	14 3/4	14 1/4	18 1/2	18
Tilt & Lift Opposite Sides (Standard)	11	10 1/2	11	10 1/2	11	10 1/2	12 1/2	12
Tilt Control Center; No Lift	7	6 1/2	5	4 1/2	5 1/2	5	6 5/8	6 1/8
No Tilt and Lift Controls; Slats Open	5 3/4	5 1/2	5	4 1/2	5 1/2	5	6 5/8	6 1/8
Minimum Length								
Cordless	6	6	6	6	6	6	6	6
LightMaster™	6	6	6	6	n/a	n/a	n/a	n/a
Cordless	6	6	n/a	n/a	n/a	n/a	n/a	n/a
Maximum Ordered Width								
2 on 1 and 3 on 1 Headrail	142	142	142	142	142	142	142	142
Cordless	142	142	142	142	142	142	142	142
LightMaster™	142	142	142	n/a	n/a	n/a	n/a	n/a
Cordless Single Blind	100-3/8	100	n/a	n/a	n/a	n/a	n/a	n/a
Cordless 2 on 1 Headrail	142	142	n/a	n/a	n/a	n/a	n/a	n/a
Maximum Length								
Cordless	126	126	126	126	126	126	126	126
LightMaster™	n/a	126	126	n/a	n/a	n/a	n/a	n/a
Cordless	73	73	n/a	n/a	n/a	n/a	n/a	n/a
Standard Factory Deductions								
Inside Mount (IB)	9/16	9/16	3/4	3/4	3/4	3/4	3/4	3/4
Inside Mount (IB) Slat	3/8	3/8	1/2	1/2	1/2	1/2	1/2	1/2
Outside Mount (OB) Headrail	3/16	3/16	1/4	1/4	1/4	1/4	1/4	1/4
Outside Mount (OB) Slat	0	0	0	0	0	0	0	0
Blind Height	0	0	0	0	0	0	0	0
Dimensions								
Headrail (Height x Depth)	1-1/2 x 1- 5/8		1 x 1-9/16		3/4 x 13/16		2-5/16 x 2-1/4	
Inside Mount (IB) Bracket (Height x Depth)	7/16 x 1-15/16		1-7/16 x 1-13/16		1-1/8 x 1-7/16		2-9/16 x 2-1/2	
Outside Mount (OB) Bracket (Height x Depth)	1-7/16 x 1-13/16		same as IB		same as IB		same as IB	
Bottomrail	.35 x 1-1/8		.38 x .76		.38 x .76		.545 x 2.08	
Mounting Requirements								
Inside Mount (IB)								
Minimum Required Mounting Surface	5/8	5/8	1/2	1/2	1/2	1/2	1/2	1/2
Minimum Required Depth Flush Mount-No Valance	1-3/4	1-3/4	1-13/16	1-13/16	1-7/16	1-7/16	2-1/2	2-1/2
Minimum Required Depth Flush Mount-With Valance	n/a	n/a	2-1/2	2-1/2	1-3/4	1-3/4	3	3
Outside Mount (OB)								
Minimum Required Mounting Space	1/2	1/2	1/2	1/2	1/2	1/2	3/4	3/4
Rail-to-Mount Surface Clearance	5/8	5/8	1/4	1/4	3/16	3/16	1/8	1/8
Slat End-to-Mount Surface Clearance	3/8	9/16	3/8	3/8	7/16	7/16	1/4	1/4
Multiple Blinds on One Headrail Spacing								
2 on 1 or 3 on 1 Standard Corded	1/2	1/2	1/2	1/2	1/2	1/2	1/2	1/2
2 on 1 or 3 on 1 Lightmaster™	n/a	1/2	1/2	n/a	n/a	n/a	n/a	n/a
2 on 1 or 3 on 1 Cordless	1/2	1/2	n/a	n/a	n/a	n/a	n/a	n/a
Stacking Heights - Stacks to								
3"	48 1/4	36 3/4	54	54	55 3/4	55 3/4	n/a	n/a
3.5"	72 1/4	55	71	71	71 1/2	71 1/2	21 3/4	21 3/4
4"	96	72 1/4	88	88	87 1/4	87 1/4	40 1/4	40 1/4
4.5"	120	91 1/2	105	105	103	103	58 3/4	58 3/4
5"	n/a	9 3/4	122	122	118 3/4	118 3/4	77 1/4	77 1/4
5.5"	n/a	n/a	n/a	n/a	n/a	n/a	95 3/4	95 3/4
6"	n/a	n/a	n/a	n/a	n/a	n/a	114 1/4	114 1/4
Valance Return Lengths								
Standard	n/a	n/a	1-7/8	1-7/8	1-7/8	1-7/8	1-7/8	1-7/8
With Extension Brackets	n/a	n/a	5-1/2	5-1/2	5-1/2	5-1/2	5-1/2	5-1/2

FEATURES & OPTIONS - continued

Pocket Brackets

A typical pocket installation may require Levolor pocket brackets. The standard pocket bracket can be installed in two steps: the upper section is first secured in the top of the pocket; then, the flanges on the lower section are snapped over those on the upper section. This secures the headrail in place. The top of the pocket must be sturdy enough to support the weight of the blind and the pull forces applied to it.

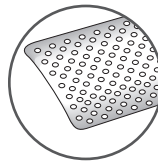


Restrictive Tilter

The Restrictive Tilter limits the range of angles the slat will tilt, ensures adequate window ventilation and reduces heat build-up. Maintains a uniform building exterior when using tiltone colors. See chart at right for available options. Not available with LightMaster™.

SheerView

SheerView provides the ability to see through a closed blind and delivers up to a 42% reduction in solar heat as compared to a fully opened blind. SheerView is available in 5 colors, 6% openness. SheerView cannot be ordered with LightMaster option.



Tiltone

Tiltone blinds allow you to bring one color to the interior of your room while providing a uniform, neutral appearance on the exterior of your home. Plus, Tiltone offers additional energy savings. Indicate which side of the slat and ladder is to be covered by marking the appropriate box on the order form. Unless otherwise specified, factory will place neutral white of ladder towards window side of blind and will match color of headrail and bottomrail to decor color on slat. Only available in 5885 Dover/Dark Bronze.

Restrictive tilter options:

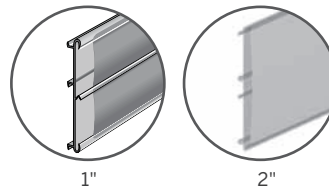
option number	performance
6060	
90111	
70111	
7575	
4545	

Top-Lok® Cord Lock/Ring Pull

Top-Lok holds the blind in a completely raised or lowered position, thus ensuring a uniform building exterior. Also, when the blinds are fully raised there is no cord accumulation on the floor. Optional ring pulls are recommended when ordering Top-Lok Cord Lock. Ring pulls hang 3" (+/-0.5") below the headrail and are an additional charge. Top-Lok is especially useful for installations where the headrail is equal to or greater than eight feet from the floor. Top-Lok also keeps unauthorized personnel from raising or lowering blinds. Authorized personnel may adjust the blinds by hooking an ordinary window pole onto the ring at the end of the lift cord (pole not included).

Vogue® Round Wrap Valance

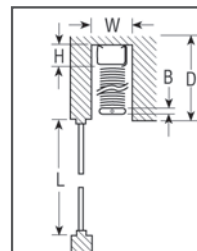
Innovative valance provides a sleek, finished look for the window. Two slat valance for the Riviera® 1/2" and 1" blinds and a one slat valance for the Riviera® 2" blinds. The Vogue Round Wrap Valance is available in Riviera 1" models and Riviera 2".



Pocket and stacking dimensions

Horizontal Blinds Pocket and Stacking Dimensions

Blind Type	H	B	S	W
Riviera 1/2"	1.875"	.406"	.625"	3.5"
Riviera Classic 1"	1.875"	.406"	.5"	3.5"
Riviera 2" Braided Ladder	3"	.563"	.375"	4"
Riviera 2" Plastic Tape	3"	.563"	.625"	4"



- L = Window Height
- W = Minimum Pocket Width
- H = Headrail Height (Including Ceiling Gap)
- B = Bottomrail Height
- S = Slat Stack Height (Per Vertical Foot of Blind)
- D = Minimum Pocket Depth
- D = H+B+(S x L/12)

Notes: All Dimensions in Inches.
All Heights are Approximate.

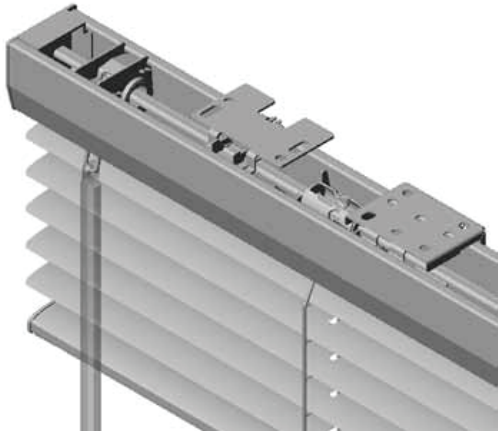
CARE INSTRUCTIONS

To keep your Levolor® Commercial Window Coverings looking their best, periodically wipe down with a soft dust cloth, a dusting mitt, or a round brush attachment from a vacuum cleaner.

- You can clean the blind hanging in place or you can take it down.
- By tilting the slats down, but not quite closed, you'll be able to clean most of the top surface of each slat.
- In a very dusty environment, just clean the blind using a sponge or dampened soft cloth.
- Use warm (not hot) water and mild detergent. The mild detergent cannot contain abrasives.
- Rinse the blind with clean water to prevent water spots.
- Place a towel on the floor or window sill to absorb any water that drips from the blind.

Please note that certain solutions and equipment are too harsh and can cause shrinkage and/or color damage to your blind. The Levolor® Commercial Lifetime-Limited Warranty does not cover damage caused by cleaning methods that use abrasive solutions or by ultrasonic cleaning machines.

MARK I 1-3/8" BLIND



FEATURES

- Steel Internal Headrail Components
- Valance-Free Design
- Concealed Mounting System
- Headrail: 1-1/2" High x 1-5/8" Wide with Crowned Underside Profile
- 1-3/8" Slat Width
- 8 Gauge Slat
- Enclosed Bottomrail with Bottom Bumper
- Guardian Tilter Disengaging Clutch Mechanism
- Crash Proof Cordlock
- Available Cordless
- Limited Lifetime Warranty
- 27.5mm Ladder Spacing

MARK I 1-3/8" BLIND OPTIONS

COLORS

Available in all colors

BASIC FINISHES

Solid
Tiltone

PREMIUM SLAT FINISHES

Pearlescence

Opulescence

See Color Index page for available color listing

Metallic

FREE OPTIONS

Hold-down Brackets

Cordless Control Options:

Tilter Left (Standard)

Tilter Right

Traditional Lift Cord Control Options:

Tilter Left, Lift Cord Right (Standard)

Tilter Right, Lift Cord Left

All Controls Right

All Controls Left

See specifications page for size limitations

Extension Brackets (Choose from 1-1/4" or 2-3/4" to 4-1/4")

SURCHARGED OPTIONS

Multiple Blinds on One Headrail:

2 Blinds per Headrail

3 Blinds per Headrail

Cutout Option:

Side Cutout

Center Cutout

Top-Lok Cord Lock

Ring Pull

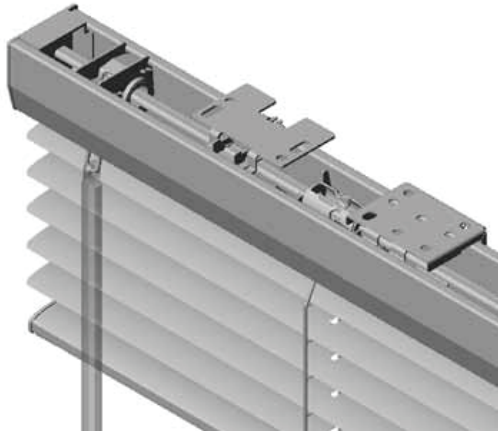
Restrictive Tilter

(See Features & Options page for details)

Blinds 17" in width or less

* Must be requested at time of order

MARK I 1" BLIND



FEATURES

- Steel Internal Headrail Components
- Valance-Free Design
- Concealed Mounting System
- Headrail: 1-1/2" High x 1-5/8" Wide with Crowned Underside Profile
- 1" Slat Width
- 8 Gauge Slat
- Enclosed Bottomrail with Bottom Bumper
- Guardian Tilter Disengaging Clutch Mechanism
- Crash Proof Cordlock
- Available Cordless
- Available LightMaster™
- Limited Lifetime Warranty
- 21.5mm Ladder Spacing (Standard)
- 19.5mm Ladder Spacing (Upgrade)
- 18mm Ladder Spacing (LightMaster™)

MARK I 1" BLIND OPTIONS

COLORS

Available in all colors

BASIC FINISHES

Solid
Tiltone

PREMIUM SLAT FINISHES

Pearlescence See Pricing Chart for Surcharge
Opulescence See Color Index page for color listing
Metallic
Sheerveiw

FREE OPTIONS

Hold-down Brackets
Cordless Control Options:
Tilter Left (Standard)
Tilter Right

Traditional Lift Cord Control Options:
Tilter Left, Lift Cord Right (Standard)
Tilter Right, Lift Cord Left
All Controls Right
All Controls Left

See specifications page for size limitations
Extension Brackets (Choose from 1-1/4" or 2-3/4" to 4-1/4")

* Must be requested at time of order

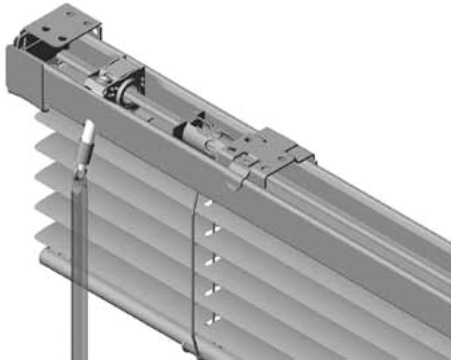
SURCHARGED OPTIONS

Multiple Blinds on One Headrail:
2 Blinds per Headrail
3 Blinds per Headrail

Cutout Option:
Side Cutout

Top-Lok Cord Lock**
Ring Pull
Restrictive Tilter
(see Features & Options page for details) Blinds 17" in width or less
Ladder Upgrade (19.5mm ladder)

RIVIERA® CLASSIC 1" BLIND



FEATURES

- Steel Internal Headrail Components
- Valance Available
- Headrail: 1" High x 1-9/16" Wide
- 1" Slat Width
- 8 Gauge Slat
- Guardian Tilter Disengaging Clutch Mechanism
- Crash Proof Cordlock
- Available LightMaster™
- Limited Lifetime Warranty
- 21.5mm Ladder Spacing
- 19.5mm Ladder Spacing
- 18mm Ladder Spacing (LightMaster™)

RIVIERA® CLASSIC 1" BLIND OPTIONS

COLORS

Available in all colors

BASIC FINISHES

Solid
Tiltone

PREMIUM SLAT FINISHES

Pearlescence See Pricing Chart for Surcharge
Opulescence See Color Index page for color listing
Metallic
Sheer View

FREE OPTIONS

Hold-down Brackets

Traditional Lift Cord Control Options:

Tilter Left, Lift Cord Right (Standard)
Tilter Right, Lift Cord Left
All Controls Right
All Controls Left
2 Slat Framed Vogue Valance

See specifications page for size limitations

Extension Brackets (Choose from 1-1/4" or 2-3/4" to 4-1/4")

* Must be requested at time of order

SURCHARGED OPTIONS

Multiple Blinds on One Headrail:
2 Blinds per Headrail
3 Blinds per Headrail

Cutout Option:
Side Cutout

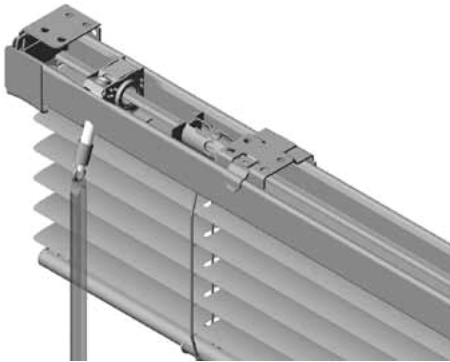
Top-Lok Cord Lock**

Ring Pull

Restrictive Tilter

(see Features & Options page for details) Ladder Upgrade (19.5mm ladder) Blinds 17" in width or less

RIVIERA® CONTRACT 1" BLIND



FEATURES

- Steel Internal Headrail Components
- Headrail: 1" High x 1-9/16" Wide
- 1" Slat Width
- 6 Gauge Slat
- Guardian Tilter Disengaging Clutch Mechanism
- Crash Proof Cordlock
- Limited Lifetime Warranty
- 21.5mm Ladder Spacing

RIVIERA® CONTRACT 1" BLIND OPTIONS

COLORS

Available in all colors

BASIC FINISHES

Solid

PREMIUM SLAT FINISHES

Metallic

See Color Index page for color listing

FREE OPTIONS

Hold-down Brackets

Traditional Lift Cord Control Options:

Tilter Left, Lift Cord Right (Standard)

Tilter Right, Lift Cord Left

All Controls Right

All Controls Left

2 Slat Framed Vogue Valance

See specifications page for size limitations

Extension Brackets (Choose from 1-1/4" or 2-3/4" to 4-1/4")

*** Must be requested at time of order**

SURCHARGED OPTIONS

Multiple Blinds on One Headrail:

2 Blinds per Headrail

3 Blinds per Headrail

Cutout Option:

Side Cutout

Top-Lok Cord Lock**

Ring Pull

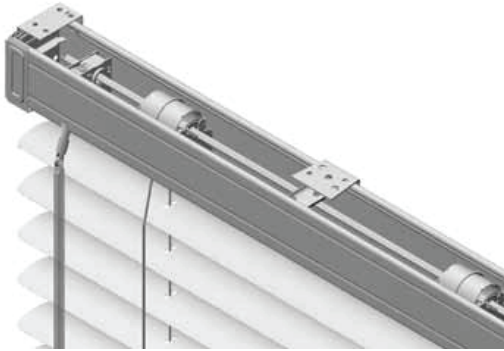
Restrictive Tilter

(see Features & Options page for details)

Blinds 17" in width or less

**Not available with LightMaster™

RIVIERA® 2" BLIND



FEATURES

- Headrail: 2 5/16" High x 2-1/4" Wide with Crowned Underside Profile
- 2" Slat Width
- 9 Gauge Slat
- Optional Vinyl or Fabric Twill Tapes
- Optional Heavy Duty C90 Cord
- Limited Lifetime Warranty
- 44mm Ladder Spacing

RIVIERA® 2" BLIND OPTIONS

COLORS

See Color Index page for available color listing

BASIC FINISHES

Solid

PREMIUM SLAT FINISHES

Metallic See Color Index page for color listing

FREE OPTIONS

2" Slat Framed Vogue Valance

Hold-down Brackets

Control Options:

Tilter Left, Lift Cord Right (Standard)

Tilter Right, Lift Cord Left

All Controls Right

All Controls Left

See specifications page for size limitations

Extension Brackets (Choose from 2" or 4")

* Must be requested at time of order

1-1/2" COTTON TWILL TAPES

110 White	162 Mustard	584 Forest Green
138 Taupe	301 Harvest	662 Midnight Blue
140 Eggshell	503 Celadon	890 Black

1-1/2" VINYL TAPES

110 White	310 Sand
140 Eggshell	820 Squirrel Gray

SURCHARGE OPTIONS

Multiple Blinds on One Headrail:

2 Blinds per Headrail

3 Blinds per Headrail

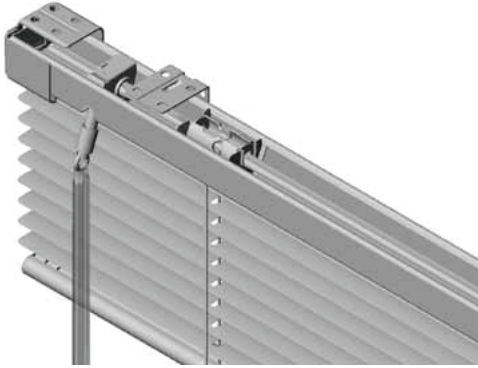
Cutout Option:

Side Cutout

Cotton Twill/Vinyl Tapes

Blinds 17" in width or less

RIVIERA® 1/2" BLIND



FEATURES

- Steel Internal Headrail Components
- Headrail: 1" High x 1-9/16" Wide
- 1/2" Slat Width
- 8 Gauge Slat
- Guardian Tilter Disengaging Clutch Mechanism
- Crash Proof Cordlock
- Double Slat Vogue Valance Available
- Limited Lifetime Warranty
- 11.75mm Ladder Spacing

RIVIERA® 1/2" BLIND OPTIONS

COLORS

See Color Index page for available color listing

BASIC FINISHES

Solid

PREMIUM SLAT FINISHES

Metallic

See Color Index page for color listing

FREE OPTIONS

2" Slat Framed Vogue Valance

Hold-down Brackets

Control Options:

Tilter Left, Lift Cord Right (Standard)

Tilter Right, Lift Cord Left

All Controls Right

All Controls Left

See specifications page for size limitations

Extension Brackets

(Choose from 1-1/4" or 2-3/4" to 4-1/4")

SURCHARGE OPTIONS

Multiple Blinds on One Headrail:

2 Blinds per Headrail

3 Blinds per Headrail

Cutout Option:

Side Cutout

Blinds 17" in width or less

* Must be requested at time of order

MONACO® 6 1" BLIND



FEATURES

- Headrail: 15/16" High x 1-3/8" Wide with Crowned Underside Profile
- 1" Slat Width
- 6 Gauge Slat
- Available LightMaster™
- Limited Lifetime Warranty
- Maximum Size Available 96"x 96"
- 21.5 mm Ladder Spacing (Standard)
- 18mm Ladder Spacing (LightMaster™)
- Color-Coordinated Box Brackets
- Standard (Hidden Brackets Available)

MONACO® 6 1" BLIND OPTIONS

COLORS

See Color Index page for available color listing

BASIC FINISHES

Solid

PREMIUM SLAT FINISHES

Metallic

FREE OPTIONS

Hold-down Brackets

Traditional Lift Cord Control Options:

Tilter Left, Lift Cord Right (Standard)

Tilter Right, Lift Cord Left

All Controls Right

All Controls Left

SURCHARGE OPTIONS

Add to the Price of the Blind:

Blinds 17' in width or less

See specifications page for size limitations

Extension Brackets (Choose from 1-1/4" or 2-3/4" to 4-1/4")

* Must be requested at time of order