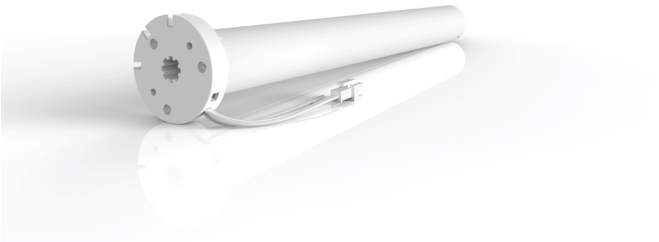
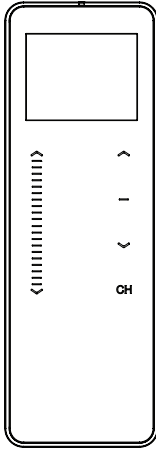


# MOTORIZED ROLLER SHADES PROGRAMMING GUIDE

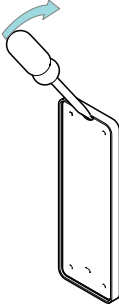
**OTTO RECHARGE  
OTTO RECHARGE PLUS  
OTTO RECHARGE MAX**



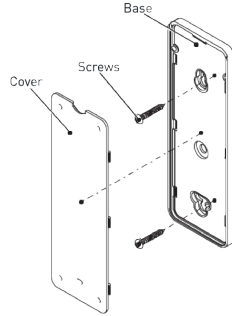
# REMOTE CONTROL BASICS

## Wall Mount Holder

Remove cover from base by prying with flat head screwdriver.

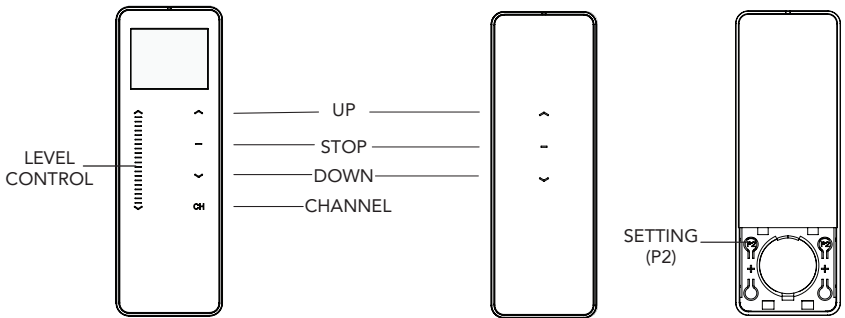


Use supplied fasteners and anchors to attach the base to wall.

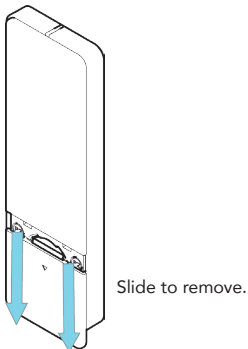


Replace cover by pressing snap latches into place.

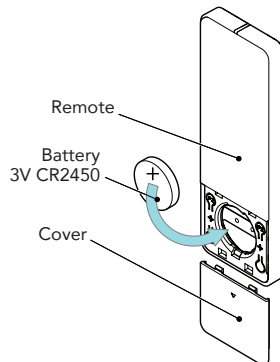
## Remote Control Functions & Battery Replacement



Remove cover from remote press gently in and down to disengage cover.



Install battery with positive (+) side facing up.

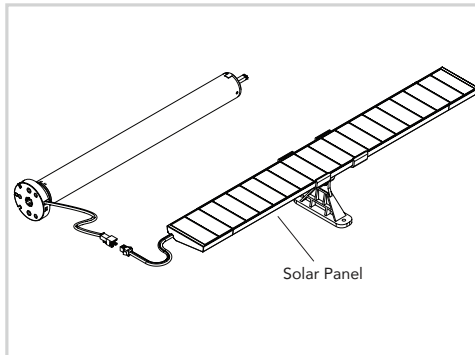
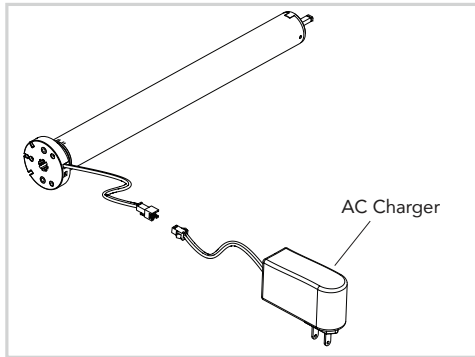


## WIRING

### Charging Options

This motor has a 12V built in Li-ion battery pack with integrated charge management.  
Max power input for recharging: 12.6V / 1000mAh.

- Before first use please charge motor for 6 hours. Using the recommended AC charger.
- During operation, if voltage drops to less than 10V, the motor will beep 10 times to prompt it needs to be charged.
- Motor will stop running when the voltage is lower than 7V and it will resume again when the voltage is greater than 7.5V.



Ensure cable is kept clear of fabric.

Ensure antenna is kept straight and away from metal objects.

# P1 BUTTON FUNCTIONS

## Motor state test

This table describes the function of a short P1 button press/release (<2 seconds) depending on current motor configuration.

P1 Press	Condition	Function Achieved	Visual Feedback	Audible Feedback	Function Described
Short Press	If limit is NOT set	None	No Action	None	No Action
	If limits are set	Operational control of motor, run to limit. Stop if running	Motor runs	None	Operational control of motor after pairing and limit setting is completed first time
	If motor is in "Sleep Mode" & limits are set	Wake and control	Motor wakes and runs in a direction	None	Motor is restored from Sleep Mode and RF control is active

## Motor configuration options

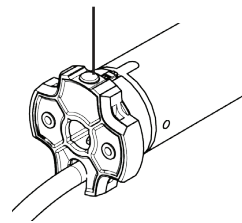
The P1 Button is utilized to administer motor configuration as described below and beginning in Section

### Activate Pairing Mode

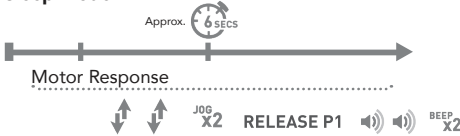


Hold P1

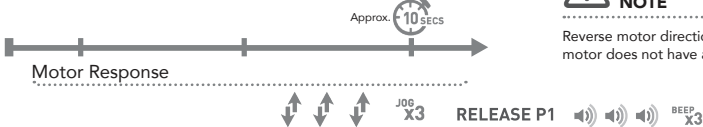
P1



### Sleep Mode



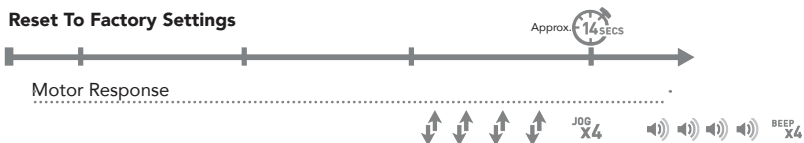
### Reverse Direction



### NOTE

Reverse motor direction from P1 button only when motor does not have any limits.

### Reset To Factory Settings



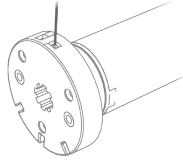
# INITIAL SET-UP

## Pair motor with controller

Select channel on controller.



Hold **P1** button on motor head.



Hold **STOP** on controller.



### IMPORTANT

Consult user manual for your controller for information on selecting channel.

### Motor Response



### Motor Response



**Motor is now in step mode and ready for setting limits**

## Check motor direction

To check travel direction of shade, press **UP** or **DOWN** on controller.



To reverse shade direction, hold both **UP** and **DOWN**

Until the motor responds.



**Quick Press** = Step

**Long Press** = Continuous Travel

### Motor Response



### IMPORTANT

Damage to shade may occur when operating motor prior to setting limits. Attention should be given.



### IMPORTANT

Reversing motor direction using this method is only possible during initial set-up.

## Setting Limits

Move shade to the desired highest or lowest position by pressing the **UP** or **DOWN** buttons on controller.



To save upper limit, hold **UP** and **STOP**.



To save lower limit, hold **DOWN** and **STOP**.



### IMPORTANT

Cycle shade up and down prior to setting limits to settle fabric

### Motor Response



### IMPORTANT

After setting limits, motor will automatically exit from initial set-up mode.



**Initial set-up is now complete**

# ADJUSTING LIMITS

## Adjust upper limit

Hold **UP** and **STOP** on controller.

Move shade to the desired upper position by pressing the **UP** button.

To save upper limit, hold **UP** and **STOP**.



Motor Response



Motor Response



## Adjust lower limit

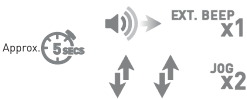
Hold **DOWN** and **STOP** on controller.

Move shade to the desired lowest position by pressing the **DOWN** button.

To save lower limit, hold **DOWN** and **STOP**.



Motor Response



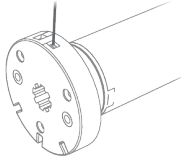
Motor Response



# ADDING OR REMOVING CONTROLLERS AND CHANNELS

## Using motor P1 button

Hold **P1** button on motor head.



Hold **STOP** on controller to add or remove.



Motor Response



Motor Response



## Using a pre-existing controller

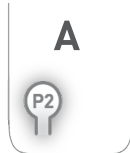
**A**= Existing controller or channel (to keep)

**B**= Controller or channel to add or remove

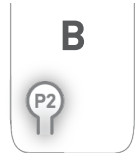
Press **P2** on existing controller.



Press **P2** on existing controller.



Press **P2** on new controller.



Motor Response



Motor Response



Motor Response



### IMPORTANT

Consult user manual for your controller or sensor.



# FAVORITE POSITIONING

## Set favorite position

Move shade to the desired position by pressing the **UP** or **DOWN** button on the controller.



Press **P2** on controller.



Press **STOP** on controller.



Press **STOP** on controller.



Motor Response



Motor Response



Motor Response



## Send shade to favorite position

Hold **STOP** on controller.



## Delete favorite position

Press **P2** on controller.



Press **STOP** on controller.



Press **STOP** on controller.



Motor Response



Motor Response

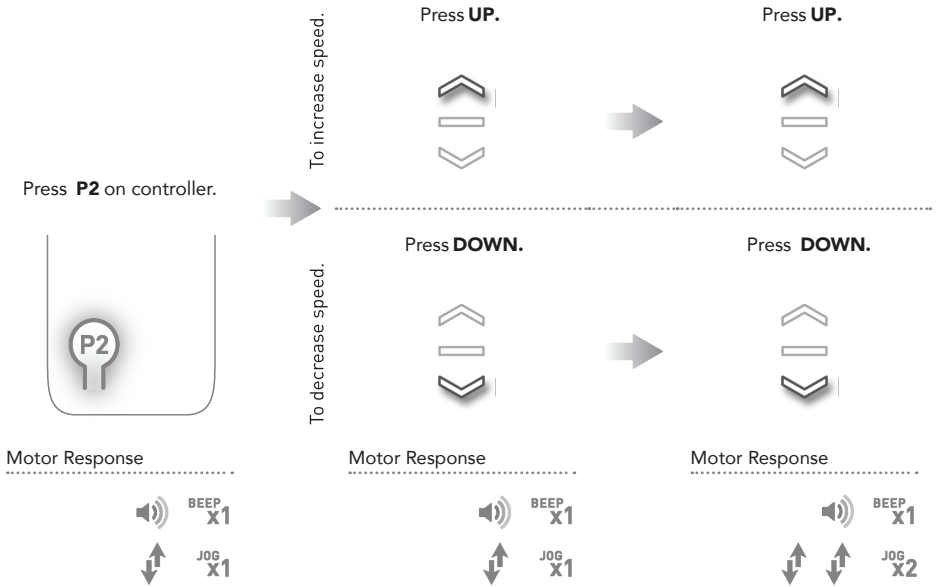


Motor Response



# ADJUSTING MOTOR SPEED

## Increase or decrease motor speed



### IMPORTANT

If motor does not react to speed adjustment, the maximum or minimum speed has already been reached.

# ROLLER MODE

## Enter roller mode (Default)

Hold **UP** and **DOWN** on controller.



Press **STOP**.



Motor Response

Approx.  5 secs



JOG  
X1

Motor Response



BEEP  
X3



JOG  
X2

## TROUBLESHOOTING

Problem	Cause	Remedy
Motor is not responding	Battery in motor is depleted	Recharge with compatible AC adapter and check connection and positioning of PV panel.
	Insufficient charging from Solar (PV) Panel	Check connection and orientation of PV panel.
	Transmitter battery is discharged	Replace battery
	Battery is inserted incorrectly into transmitter	Check battery polarity
	Radio interference/shielding	Ensure transmitter is positioned away from metal objects and the aerial on motor or receiver is kept straight and away from metal
	Receiver distance is too far from transmitter	Move transmitter to a closer position
	Power failure	Check power supply to motor is connected and active
Motor beeps 10 times when in use	Incorrect wiring	Check that wiring is connected correctly (refer to motor installation instructions)
	Battery voltage is low / PV (solar) panel issue	Recharge with AC adapter or check connection and positioning of PV pane
Cannot program a single Motor (multiple motors respond)	Multiple motors are paired to the same channel.	<p>Always reserve an individual channel for programming functions</p> <p>SYSTEM BEST PRACTICE - Provide an extra 15 channel controller in your multi motor projects, that provides individual control for each motor for programming purposes</p>