

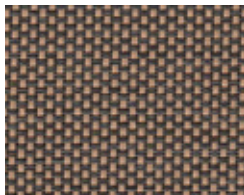
# E Screen WITH KOOLBLACK<sup>®</sup> TECHNOLOGY

## Innovative, Patented Science

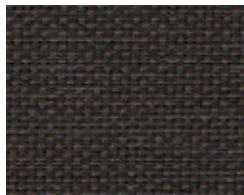
KoolBlack Technology incorporates heat reflective properties into roller shade fabrics to save energy and improve comfort, while maintaining the glare control and view-through benefits of dark fabrics.



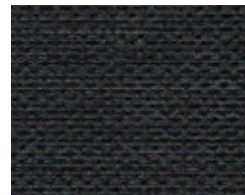
Cocoa/Cocoa



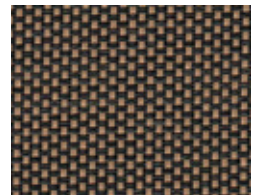
Cocoa/Apricot



Charcoal/Cocoa



Charcoal/Charcoal



Charcoal/Apricot

## KoolBlack Features and Benefits

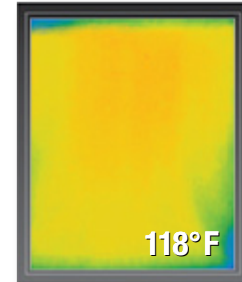
- High contrast for clear & sharp view through
- Exceptional glare control
- Coordinated exterior building design
- Reflects Near Infrared (NIR) solar energy
- Increased energy savings
- Improved comfort
- Up to 23% improvement in solar heat gain coefficient (SHGC) / G Value versus standard dark screen fabric
- Up to 42% lower solar absorption
- Up to 30% higher solar reflectance

The images below show the temperature of the shade fabrics at the window.

**Standard Dark Screen Fabric**



**E Screen with KoolBlack Technology**



## Coordinated Commercial Solution E Screen with KoolBlack Technology + E Screen Original

Coordinate E Screen with KoolBlack Technology and E Screen Original colors to achieve a seamless exterior appearance and cost-saving solution for commercial applications.

**where** Eastern & Western Exposures  
**what** E Screen with KOOLBLACK Technology  
**why** Improved Comfort & Energy Savings

**where** Northern & Southern Exposures  
**what** E Screen Original  
**why** Value Offering & Seamless Coordination

## Specifications

Fabric Width: 98", 122"  
Roll Length: 30 ly  
Fabric Weight: 3% = 11.3 oz/yd<sup>2</sup>  
5% = 10.6 oz/yd<sup>2</sup>

Fabric Thickness: 3% = 0.020" ± 5%  
5% = 0.019" ± 5%  
Openness Factor: 3% & 5%  
Composition: 36% Fiberglass, 64% Vinyl

Fire Classifications: NFPA 701-10 TM#1,  
California U.S. Title 19  
Bacteria and  
Fungal Resistance: ASTM G21; ASTM E 2180  
Product Type: Interior / Transparent

## Fenestration Properties

**E Screen with KoolBlack Technology 7503 (3%) and 7505 (5%)**  
**E Screen Original 7503 (3%) and 7505 (5%)**

COLOR	SOLAR OPTICAL PROPERTIES								SC		SHGC/G VALUE			
	Ts		Rs		As		Tv		1/4CL		CL-S		DG	
	3%	5%	3%	5%	3%	5%	3%	5%	3%	5%	3%	5%	3%	5%
<b>Cocoa/Apricot KoolBlack</b>	<b>19</b>	<b>21</b>	<b>42</b>	<b>39</b>	<b>39</b>	<b>40</b>	<b>7</b>	<b>10</b>	<b>0.55</b>	<b>0.58</b>	<b>0.49</b>	<b>0.51</b>	<b>0.43</b>	<b>0.45</b>
Cocoa/Apricot Original	7	10	19	17	74	73	6	8	0.70	0.72	0.61	0.63	0.51	0.51
<b>Charcoal/Apricot KoolBlack</b>	<b>18</b>	<b>21</b>	<b>38</b>	<b>37</b>	<b>44</b>	<b>42</b>	<b>6</b>	<b>9</b>	<b>0.58</b>	<b>0.59</b>	<b>0.51</b>	<b>0.52</b>	<b>0.45</b>	<b>0.45</b>
Charcoal/Apricot Original	7	7	18	15	75	78	7	6	0.71	0.72	0.62	0.62	0.51	0.51
<b>Cocoa/Cocoa KoolBlack</b>	<b>16</b>	<b>19</b>	<b>36</b>	<b>36</b>	<b>48</b>	<b>45</b>	<b>5</b>	<b>8</b>	<b>0.59</b>	<b>0.60</b>	<b>0.52</b>	<b>0.53</b>	<b>0.45</b>	<b>0.45</b>
Cocoa/Cocoa Original	5	7	9	9	86	84	5	6	0.77	0.77	0.67	0.67	0.54	0.54
<b>Charcoal/Cocoa KoolBlack</b>	<b>17</b>	<b>19</b>	<b>35</b>	<b>32</b>	<b>48</b>	<b>49</b>	<b>6</b>	<b>7</b>	<b>0.60</b>	<b>0.62</b>	<b>0.53</b>	<b>0.55</b>	<b>0.46</b>	<b>0.47</b>
Charcoal/Cocoa Original	4	7	7	6	89	87	3	7	0.78	0.79	0.68	0.69	0.55	0.55
<b>Charcoal/Charcoal KoolBlack</b>	<b>17</b>	<b>18</b>	<b>34</b>	<b>33</b>	<b>49</b>	<b>49</b>	<b>6</b>	<b>6</b>	<b>0.61</b>	<b>0.61</b>	<b>0.54</b>	<b>0.54</b>	<b>0.46</b>	<b>0.46</b>
Charcoal/Charcoal Original	5	4	4	6	91	90	4	4	0.80	0.78	0.70	0.68	0.56	0.55