

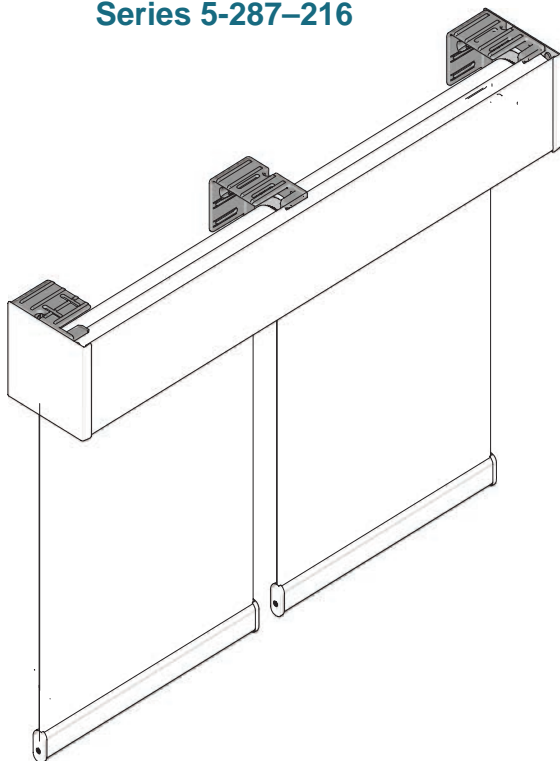


Installation Instructions

RB 500 Motorized Roller Shades

4" Fascia Coupled

Series 5-287-216



Compatible Motors

LT50 RA 525A2

LT50 Altus RTS 525A2

Sonesse 50 RTS 506S2

Sonesse 50 DCT 506S2

Sonesse 50 RA 506S2

Sonesse 50 RS485 506S2

Sonesse 50 RTS 510S2

Sonesse 50 DCT 510S2

Sonesse 50 RA 510S2

Sonesse 50 RS485 510S2

Sonesse ULTRA 50 RTS 506A2

Sonesse ULTRA 50 RA 506A2

Sonesse ULTRA 50 RS485 506A2

LT50 RS485 515S2

LT50 RS485 535A2

Sonesse ULTRA 50 DC RTS 504A8

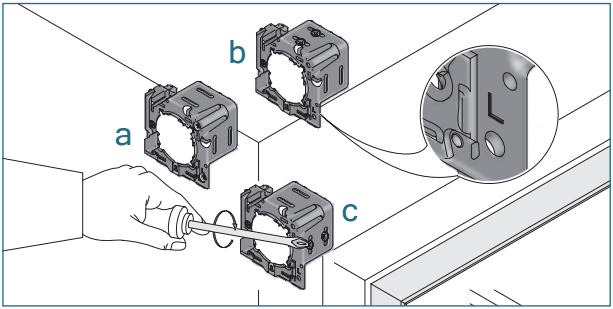
Sonesse 50 DC RS485 504A8

Sonesse 30 RTS

Sonesse 30 DCT

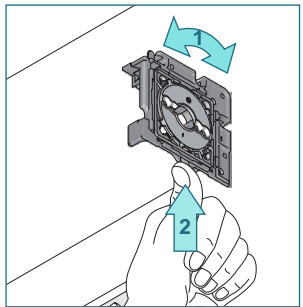
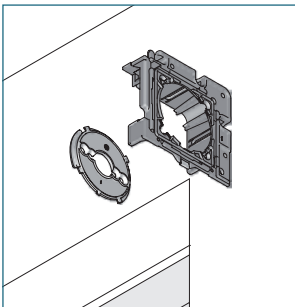
Sonesse 30 RS485

Installation



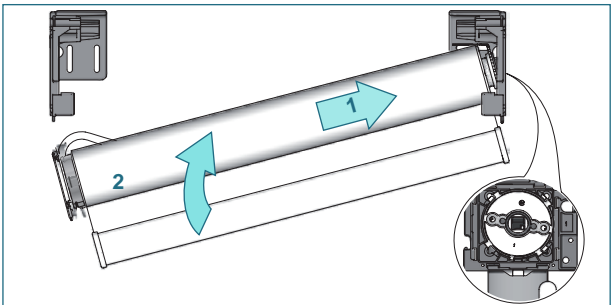
Install the clutch bracket and intermediate bracket first.

a) recess b) ceiling c) wall

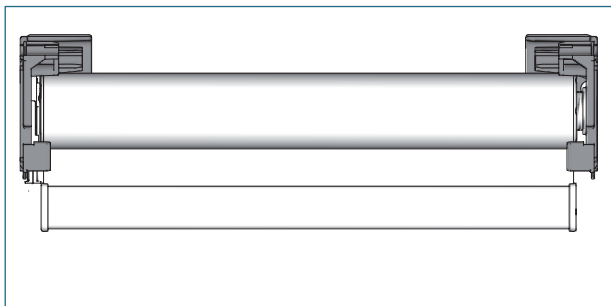


Insert the Plate L into the intermediate bracket. Turn the Plate L in the rolling off direction(1) and secure with the locking clip (2).

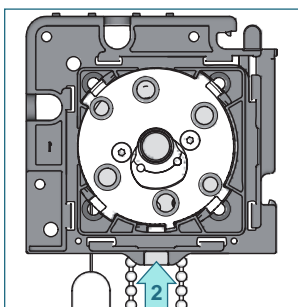
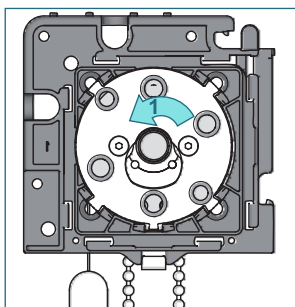
Not necessary when using bracket with leveler.



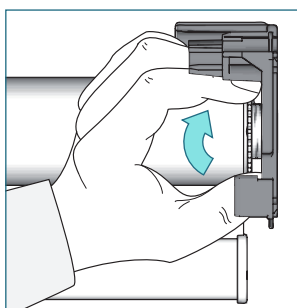
Place the shade with the idle end onto the bracket. Push the shade against tube bearing plug and lift it up ...



...until the clutch plate fits the bracket.

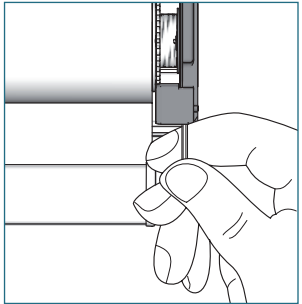
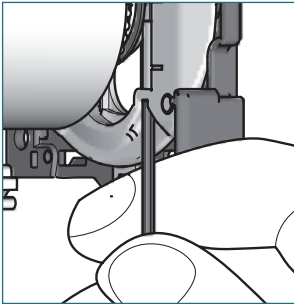


Turn the blind (10°) in the rolling off direction (1) and fix it with the bracket clip (2).



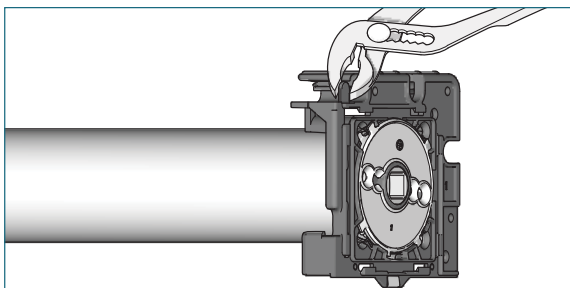
Fix the blind by turning the locking ring against the bearing.

Option: Leveller

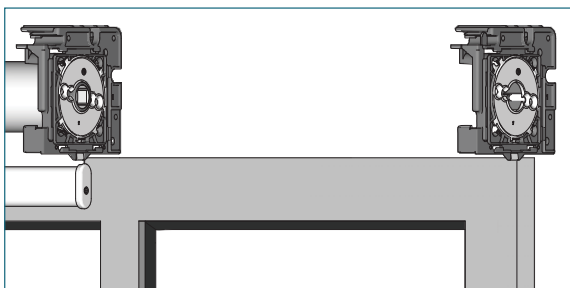


To adjust skewing, put the provided Allen key into the screw of the leveller and turn it left or right to move the blind up and down. Support lifting of large heavy blinds with the palm of your hand.

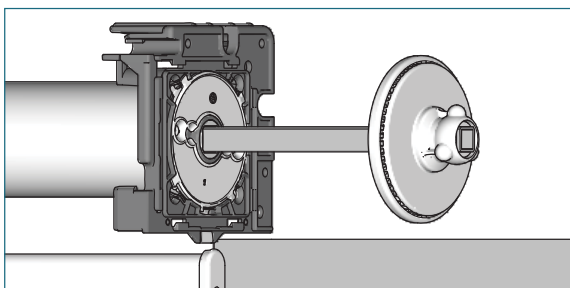
Installation: Coupled shade



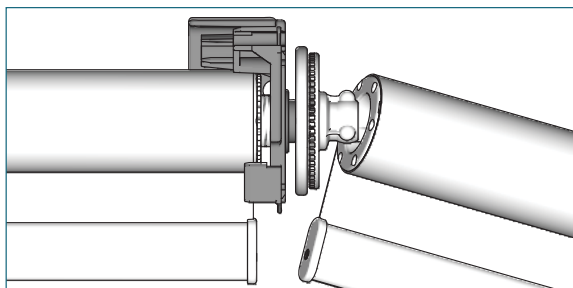
Use a pair of pliers to break off the stopper from the intermediate bracket.



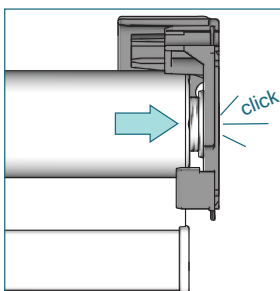
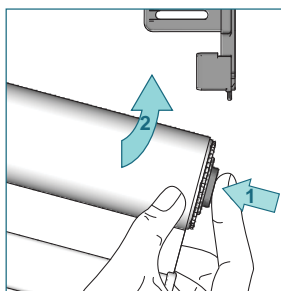
Install the outer bracket with the screws provided.



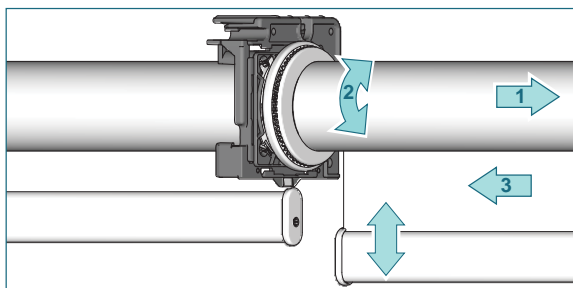
Slide the aligner or the connector set through the intermediate bracket into the tube bearing plug.



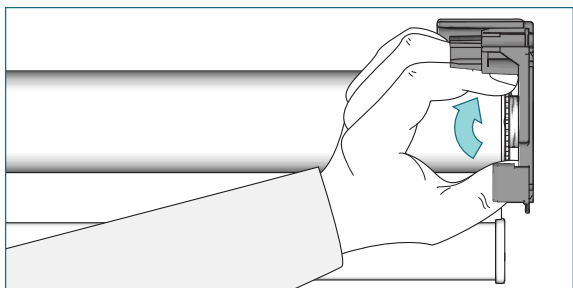
Place the tube with plug connector on the aligner or connector set head.



Press the tube bearing plug, lift the roller shade and snap it into the bracket.

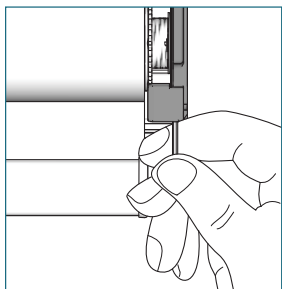
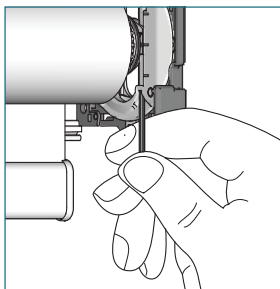


To align the bottom hembar, pull the shade away from aligner set (1), turn shade to line up bottom hembar together (2). Release shade to secure position (3). Not possible when using connector set.

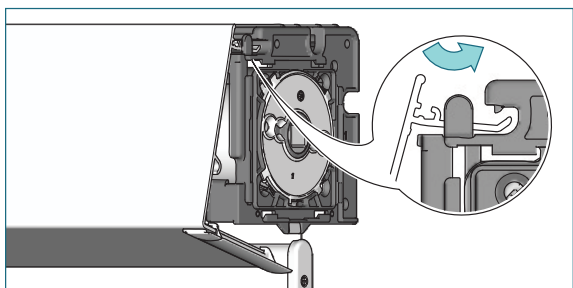


Secure shade band by turning the locking ring on tube bearing plug furthest away from the bracket.

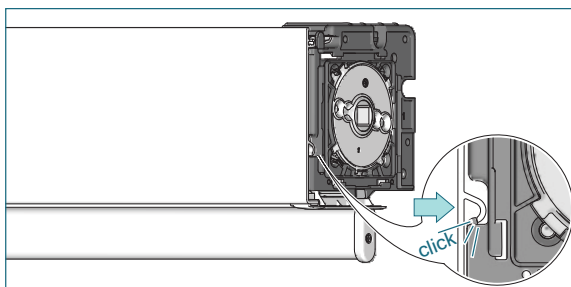
Option: Leveler



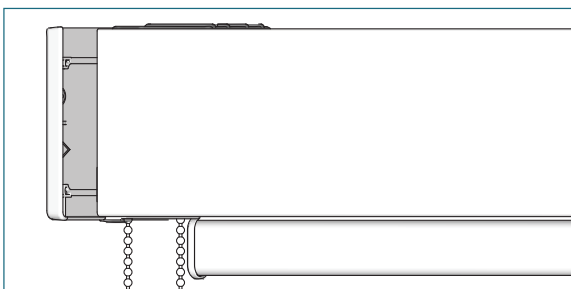
To adjust skewing, put the provided Allen key into the screw of the leveler and turn it left or right to move the shade up and down. Support lifting of large heavy roller shades with the palm of your hand.



Place the fascia in the bracket. Make sure that the fascia slides under the nose of the bracket.

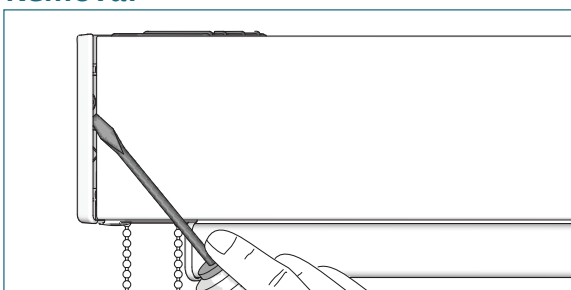


Push the fascia to snap it into the bracket.

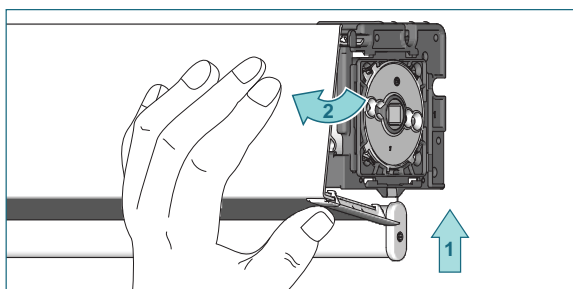


Slide the bracket covers onto the brackets.

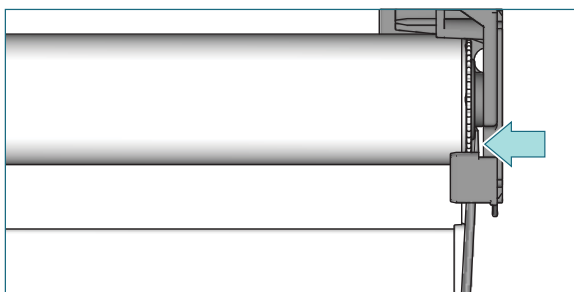
Removal



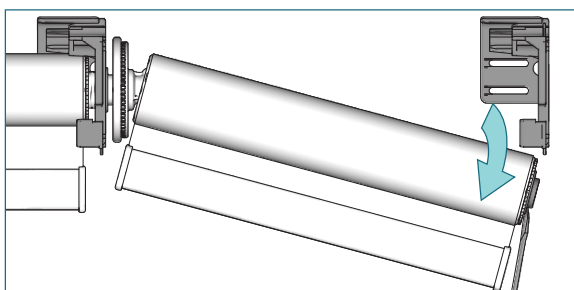
Place the screw driver under the bracket cover, turn the screw driver and slide the bracket cover from the bracket.



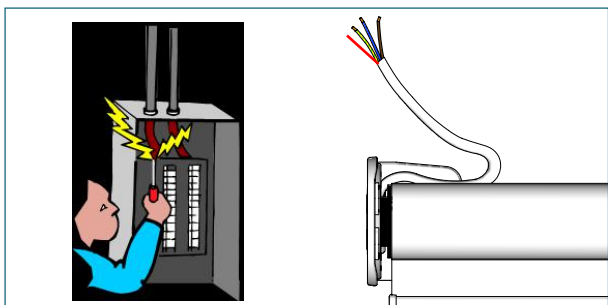
Press the bottom of the fascia upwards (1) and pull it outwards (2).



Unfasten the locking ring. Slide a screw driver between locking ring and bracket and push the tube bearing plug in the aligner/connector direction.



Move the roller shade downwards out of the bracket. Pull the aligner or connector out of the idle end.



Connect the motor and all controls in accordance with all safety standards.