

Installation Instructions

HunterDouglas 
Architectural



RB 500+ Manual **Roller Shades**

with Heavy Duty Brackets - Outside Mount

Window Coverings

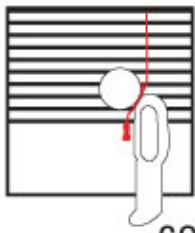
Hunter Douglas Architectural Window Coverings continues to deliver expertly engineered solutions to manage light and glare control.

This booklet provides installation instructions that can be used as a stand alone piece or may accompany video instructions at bit.ly/2vm9z2p

RB 500+ Manual
Roller Shades
with Heavy Duty Brackets - Outside Mount

HunterDouglas 
Architectural

⚠️ WARNING/ADVERTENCIA



Window Blind Cord Strangulation Risk

Window blinds with a damaged or loose tension device or retractable cord that fails to fully retract pose a strangulation risk to children. To avoid this potential strangulation risk, consider purchasing cordless products or products with inaccessible cords.

Riesgo de Estrangulamiento en Cuerdas de Persianas

Las persianas con un dispositivo tensor suelto o dañado o con una cuerda retráctable que no se ajusta completamente representan un riesgo de estrangulación para los niños. Para evitar un posible riesgo de estrangulamiento, considere comprar productos inalámbricos o productos con cuerdas inaccesibles.

Copyright © 2019 Hunter Douglas Architectural

800-727-8953

HDarchitectural.com

Materials Needed



Power Drill, 5/32" & 1/8" Drill Bits, 5/16" Hex Driver



Steel Tape



Pencil



Flat Blade and Philips Screwdrivers



2" Screws #10



Needle Nose Pliers



Laser Level

Installation Process



1

Measure and mark the ordered width of the shade inside the window casement. A minimum 3 1/2" vertical surface is required to mount the brackets.



2

Place your first bracket in its mounting location and mark the screw holes. Place your second bracket and repeat the process.



3

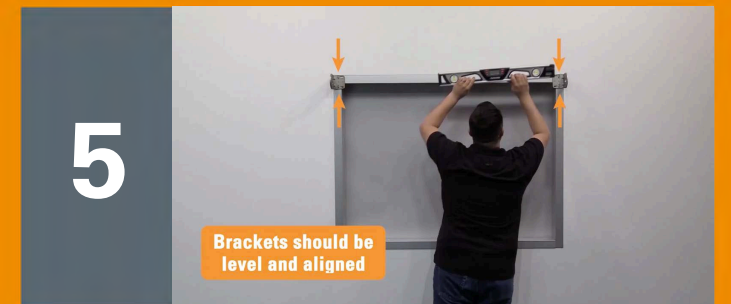
Pre-drill your screw holes using a 5/32" drill bit.

If your shade order did not include a leveler, go ahead and attach the brackets with the provided screws using the 5/16" hex driver.



4

The brackets should be level and aligned.



5

Brackets should be level and aligned

If you've chosen the pre-assembled leveler option, ensure that the opening to access the leveling set screw is pointing downward before installing the brackets. This is where you will insert the provided Allen Key to adjust skewing.



6

To adjust, insert the Allen Key into the set screw of the leveler. To lower the shade, turn the Key to the right to rotate the set screw clockwise. To raise the shade, turn the Key to the left to rotate the set screw counter clockwise.



7

Once the brackets have been mounted you are ready to install your roller shades. Note that the tape around the shade should not be removed until the shade is fully installed.



8

Installing the shade



9

First, let's install the screw covers. Simply place the covers over the screws and snap into place.



10

Next, install the clutch end of the shade onto the tab on the clutch-side bracket. The bottom of the clutch should always point straight down.



11

Finally, push the idle end into the shade and place into the idle end bracket.



12

Secure the shade by turning the locking ring away from the bracket. At this point, the tape band and child safety tag can safely be removed.



13

Now is a good time to check that the shade is level and aligned.

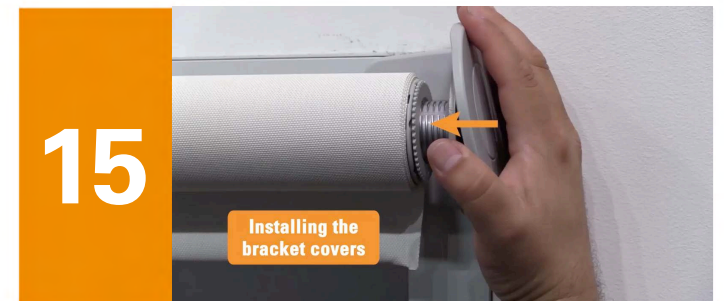
Now you're ready to mount your cord tensioner. Please refer to the video below for directions:

- [Outside Mount Video](#)



14

Once you've finished setting your bead stops, go ahead and install the bracket covers by sliding onto the brackets and snapping into place.



15

Installing the
bracket covers

Pull on both sides of the chain loop to ensure the shade is operating in the up and down direction.



16

Uninstallation Process

1

Start by unscrewing the cord tensioner.



Loosen the locking ring

2

Loosen the locking ring by turning it in the direction of the bracket.

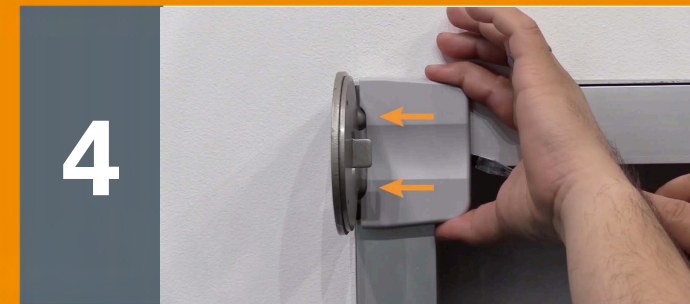


3

Next, push the idle end into the shade while pulling the shade towards you. This will allow you to pull the clutch end out of the clutch bracket.

4

Finally, snap off the screw and bracket covers using a flat blade screwdriver and with your drill, remove the screws and brackets.



Congratulations!

You have now successfully installed and uninstalled an outside mounted RB 500+ Manual Roller Shade with Heavy Duty Brackets.