

Installation Instructions

HunterDouglas 
Architectural



RB 500+ Manual **Roller Shades** with Standard Duty Brackets – Outside Mount

Window Coverings

Hunter Douglas Architectural Window Coverings continues to deliver expertly engineered solutions to manage light and glare control.

This booklet provides installation instructions that can be used as a stand alone piece or may accompany video instructions at bit.ly/2vm9z2p

RB 500+ Manual **Roller Shade**

with Standard Duty Brackets – Outside Mount

HunterDouglas 
Architectural

Copyright © 2019 Hunter Douglas Architectural

Hunter Douglas Architectural Window Coverings
13915 Danielson Street
Suite 100
Poway, CA 92064
United States

HDarchitectural.com

Materials Needed



Laser Level



Measuring Tape



Pencil



**Flat Blade and
Philips Screwdrivers**



2" Screws #10



Needle Nose Pliers



**Power Drill, 1/8"
drill bit, 5/16" hex driver**

Installation Process



Begin by installing the brackets. Remember, brackets can be installed in the following ways: Outside Mounted, Inside Mounted and End Mounted. In this video we will be installing and uninstalling an outside mounted RB 500 Manual Roller Shade with Standard Duty+ Brackets.



First, measure and mark the ordered width of the shade inside the window casement. A minimum 2 1/2" vertical surface is required to mount the brackets.



Place your first bracket in its mounting location and mark the screw holes. Place your second bracket and repeat the process.

Next, pre-drill your screw holes using a 1/8" drill bit.



If your shade order did not include a leveler, go ahead and attach the brackets with the provided screws using the 5/16" hex driver.



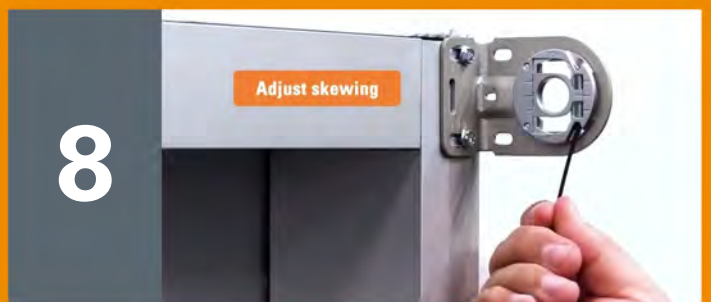
The brackets should be level and aligned.



If you've chosen the pre-assembled leveler option, ensure that the opening to access the leveling set screw is pointing downward before installing the brackets. This is where you will insert the provided Allen Key to adjust skewing.



To adjust, insert the Allen Key into the set screw of the leveler. To lower the shade, turn the Key to the right to rotate the set screw clockwise. To raise the shade, turn the Key to the left to rotate the set screw counter clockwise. All adjustments can be made after the shade has been installed and operation has been tested.





9

Once the brackets have been mounted you are ready to install your roller shades. Note that the tape around the shade should not be removed until the shade is fully installed.



10

Install the clutch end of the shade onto the tab on the clutch-side bracket. The bottom of the clutch should always point straight down. Finally, push the idle end into the shade and place into the idle end bracket.



11

Secure the shade by turning the locking ring away from the bracket. At this point, the tape band and child safety tag can safely be removed.



12

Now is a good time to check that the shade is level and aligned.



13

Once aligned, slide the bracket covers onto the brackets and snap into place.

Now you're ready to mount the cord tensioner and install the bead stops. When mounting the cord tensioner, first remove the pin from the tensioner. Realign the cord tensioners screw hole at the bottom and reinsert the pin to hold in place.



Slide the tensioner to the bottom of the beaded chain. Now you're ready to attach the cord tensioner to the inside of the window casement. Before installing, pre-drill your holes using the 1/8" drill bit. Once you have found your placement remove the pin and place a screw through the aligned hole.



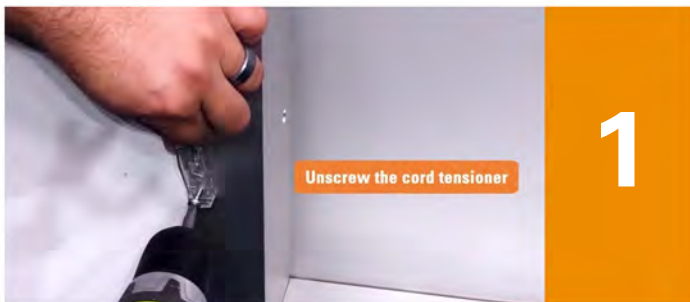
To install and set the bead stops, start by checking your upper limit. Place the bead stop at the desired height on the back chain, using pliers to fasten. Next, lower the shade and check your lower limit. Place the bead stop at the desired height on the front chain



Pull on both sides of the chain loop to ensure the shade is operating in the up and down direction.



Uninstallation Process



Start by unscrewing the cord tensioner.



Loosen the locking ring by turning it in the direction of the bracket.



Next, push the idle into the shade while pulling the shade towards you. This will allow you to pull the clutch end out of the clutch bracket.

Finally, slide off the bracket covers and with your drill, remove the screws and brackets.



Congratulations!

You have now successfully installed and uninstalled an outside mounted RB 500+ Manual Roller Shade with Standard Duty Brackets.

RB 500+ Manual **Roller Shade**

with Standard Duty Brackets – Outside Mount

INSTRUCTIONAL VIDEO

bit.ly/2VUOmvy

HunterDouglas 
Architectural