

# Installation Instructions

HunterDouglas   
Architectural



## RB 500+ Manual **Roller Shades** with Standard Duty Brackets – Outside Mount

### Window Coverings

Hunter Douglas Architectural Window Coverings continues to deliver expertly engineered solutions to manage light and glare control.

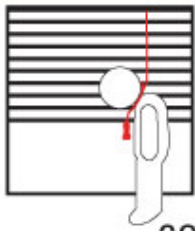
This booklet provides installation instructions that can be used as a stand alone piece or may accompany video instructions at [bit.ly/2vm9z2p](https://bit.ly/2vm9z2p)

# RB 500+ Manual **Roller Shade**

with Standard Duty Brackets – Outside Mount

**HunterDouglas**   
Architectural

## **WARNING/ADVERTENCIA**



### **Window Blind Cord Strangulation Risk**

Window blinds with a damaged or loose tension device or retractable cord that fails to fully retract pose a strangulation risk to children. To avoid this potential strangulation risk, consider purchasing cordless products or products with inaccessible cords.

### **Riesgo de Estragulación en Cuerdas de Persianas**

Las persianas con un dispositivo tensor suelto o dañado o con una cuerda retráctable que no se ajusta completamente representan un riesgo de estrangulación para los niños. Para evitar un posible riesgo de estrangulamiento, considere comprar productos inalámbricos o productos con cuerdas inaccesibles.

Copyright © 2019 Hunter Douglas Architectural

800-727-8953

HDarchitectural.com

# Materials Needed



**Laser Level**



**Measuring Tape**



**Pencil**



**Flat Blade and  
Philips Screwdrivers**



**2" Screws #10**



**Needle Nose Pliers**



**Power Drill, 1/8"  
drill bit, 5/16" hex driver**

# Installation Process



Begin by installing the brackets. Remember, brackets can be installed in the following ways: Outside Mounted, Inside Mounted and End Mounted. In this video we will be installing and uninstalling an outside mounted RB 500 Manual Roller Shade with Standard Duty+ Brackets.



First, measure and mark the ordered width of the shade inside the window casement. A minimum 2 1/2" vertical surface is required to mount the brackets.



Place your first bracket in its mounting location and mark the screw holes. Place your second bracket and repeat the process.

Next, pre-drill your screw holes using a 1/8" drill bit.



If your shade order did not include a leveler, go ahead and attach the brackets with the provided screws using the 5/16" hex driver.



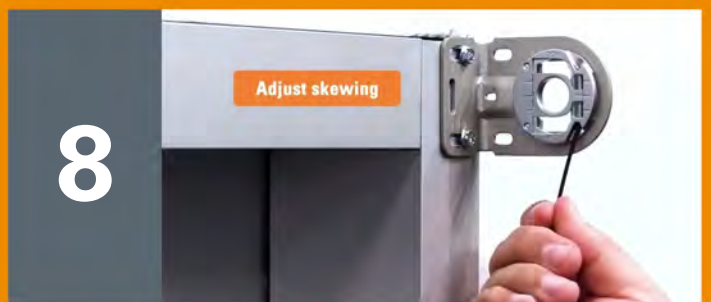
The brackets should be level and aligned.



If you've chosen the pre-assembled leveler option, ensure that the opening to access the leveling set screw is pointing downward before installing the brackets. This is where you will insert the provided Allen Key to adjust skewing.



To adjust, insert the Allen Key into the set screw of the leveler. To lower the shade, turn the Key to the right to rotate the set screw clockwise. To raise the shade, turn the Key to the left to rotate the set screw counter clockwise. All adjustments can be made after the shade has been installed and operation has been tested.





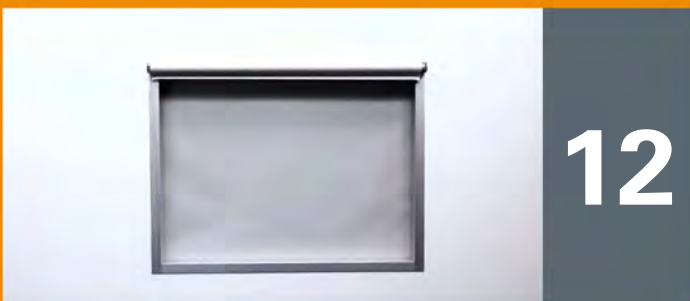
Once the brackets have been mounted you are ready to install your roller shades. Note that the tape around the shade should not be removed until the shade is fully installed.



Install the clutch end of the shade onto the tab on the clutch-side bracket. The bottom of the clutch should always point straight down. Finally, push the idle end into the shade and place into the idle end bracket.



Secure the shade by turning the locking ring away from the bracket. At this point, the tape band and child safety tag can safely be removed.



Now is a good time to check that the shade is level and aligned.



Once aligned, slide the bracket covers onto the brackets and snap into place.

Now you're ready to mount the cord tensioner. Please review the video below:

- [Outside Mount Video](#)



14



# Uninstallation Process

**1**

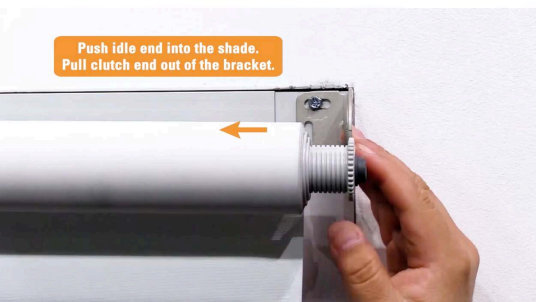
Start by unscrewing the cord tensioner.

Loosen the  
locking ring

**2**

Loosen the locking ring by turning it in the direction of the bracket.

Push idle end into the shade.  
Pull clutch end out of the bracket.

**3**

Next, push the idle into the shade while pulling the shade towards you. This will allow you to pull the clutch end out of the clutch bracket.

Finally, slide off the bracket covers and with your drill, remove the screws and brackets.



# Congratulations!

You have now successfully installed and uninstalled an outside mounted RB 500+ Manual Roller Shade with Standard Duty Brackets.