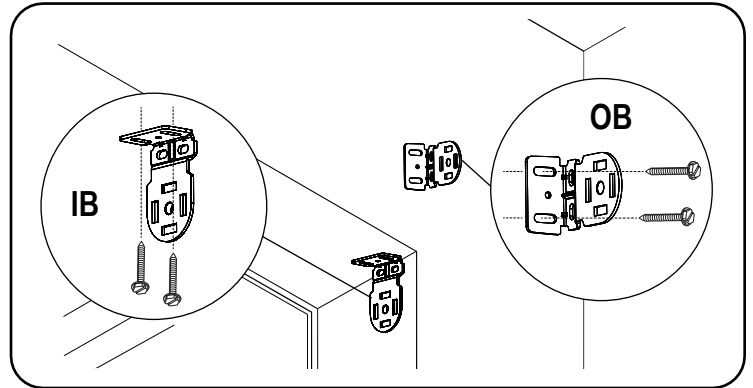
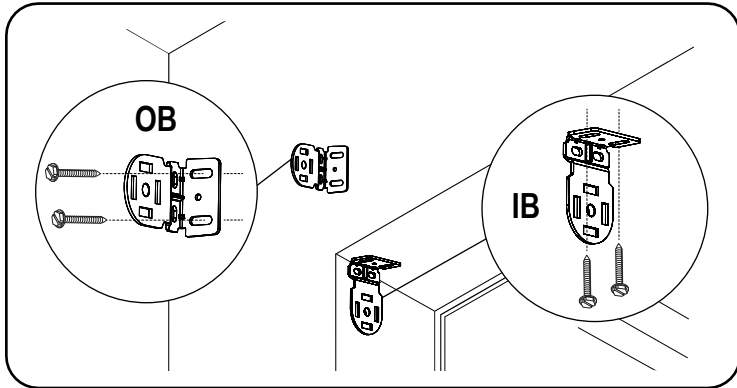


# INSTALLATION INSTRUCTIONS RB BASICS ROLLERS SHADES MANUAL ROLLER SHADE | SINGLE

**Important:** Make sure the mounting surface is level. Brackets must be in line and level for shade to operate properly. Shim brackets if necessary.

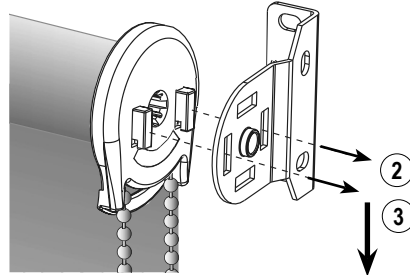
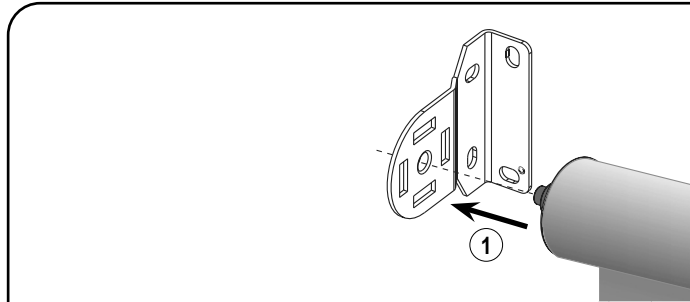
## 1. Install the Brackets



**Inside Mount (IB),** Install each bracket with two screws either through the side or up through the top. Make sure all brackets are leveled and aligned.

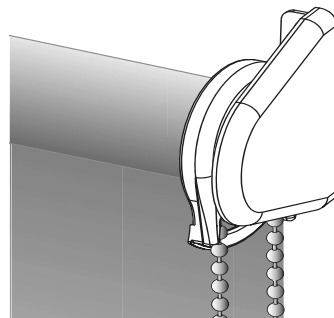
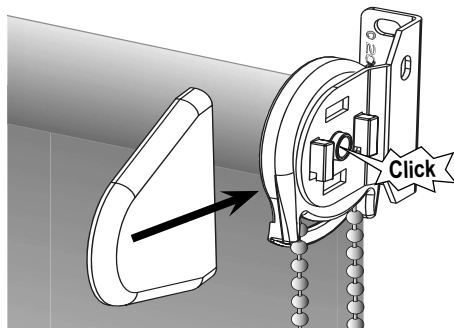
**Outside Mount (OB),** Secure each bracket with two screws. Make sure all brackets are level. Minimum 1 1/4" mounting surface height requirement.

## 2. Install the Shade

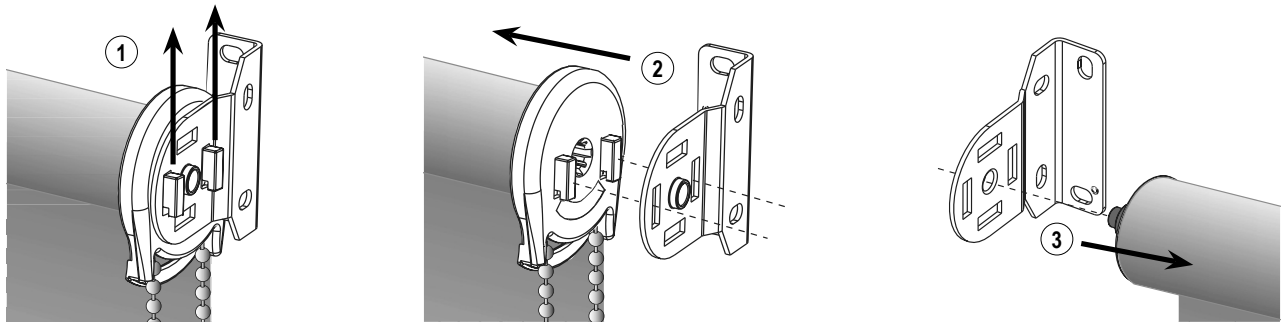


First, place the spring loaded pin end into the round hole of the bracket. Then, keeping the pin end secure in its bracket, insert the hooks on the clutch straight into the two slots in the bracket. Once the two hooks are through the slots, gently pull downward on the side with hooks until the hooks have locked securely to the bracket. The bottom of the clutch should point straight down.

## 3. Install the End Caps (Open Roll Tubes 1 1/8" to 2 1/2")



## 4. Removing the Shade



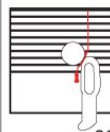
First, raise the shade. Gently lift up the control unit (hooks end) to disengage, until the hooks touch the top part of the bracket slot. Then, slide the roll towards the spring loaded pin end until the hooks are completely out of the bracket slots. Lastly, remove the spring loaded pin end from the Idler bracket.

## Child Safety

Young children can **STRANGLE** in cord loops and in the loop above the cord stop. They can also wrap cords around their necks and **STRANGLE**.

- Always keep cords out of children's reach.
- Move cribs, playpens and other furniture away from cords.  
Children can climb furniture to get to cords.
- Do not tie cords together.
- Make sure cords do not twist together and create a loop.

### **WARNING/ADVERTENCIA**



#### **Window Blind Cord Strangulation Risk**

Window blinds with a damaged or loose tension device or retractable cord that fails to fully retract pose a strangulation risk to children. To avoid this potential strangulation risk, consider purchasing cordless products or products with inaccessible cords.

#### **Riesgo de Estrangulamiento en Cuerdas de Persianas**

Las persianas con un dispositivo tensor suelto o dañado o con una cuerda retráctable que no se ajusta completamente representan un riesgo de estrangulación para los niños. Para evitar un posible riesgo de estrangulamiento, considere comprar productos inalámbricos o productos con cuerdas inaccesibles.