



## ShadeSense Alternative Wood Blinds

---

## TABLE OF CONTENTS

---

### Product Overview

- Color Charts

### Valance Information

- Individual Valance ordering and Color Chart
- Valances and Valance Return Information and Specifications

### Solid and Decorative Tape Option and Listing

### Product and Specifications

- Product Specifications - Size Specifications, Finished Dimensions and Mounting Requirements
- Product Components - Standard Rectangular
- Product Components - Cordless Lift & Lock™ System
- Product Components - Cordless XL
- CC Wand Chart

### Controls, Components, Ladder/Tape Placement & Stack-up Charts

- Standard Cord Lift
- Cordless XL
- Somfy Automation
- Cordless Lift & Lock™

### Upsize Common Carrier Delivery

All orders with any quantity of shades or blinds or any continuous valance 90" or more in width are considered oversize. Therefore, a net shipping charge per oversized unit will be assessed.

Oversized orders that require expedited shipping will be quoted and charged accordingly.

Please see General Information for additional freight and shipping charge information.

---

## COLOR CHART

---

### 2" FAUX WOOD

WHITES AND NEUTRALS	COLOR #
White	377
Extra White	378
Pure White	379
Roman White	380
Incredible White	381
Antique White	376
Ivory	374
Alabaster	375
Pewter	902
Warm Grey	903
Steel	905
Light Gray	901
Dark Gray	904
White Textured	T377
Pure White Textured	T379
Antique White Textured	T376
Pewter Textured	T902
Warm Grey Textured	T903

### 2-1/2" FAUX WOOD

WHITES AND NEUTRALS	COLOR #
White	377
Extra White	378
Pure White	379
Roman White	380
Incredible White	381
Antique White	376
Ivory	374
Alabaster	375
Pewter	902
Warm Grey	903
Steel	905
Light Gray	901
Dark Gray	904

### 2" PREMIUM GRAIN I

Gray Wash	362		
Sea Mist	361		
Ashwood	363		

### 2" PREMIUM GRAIN II

Pine	801		
Maple	802		
Smoke	803		

---

## CHARACTERISTICS OF FAUX WOOD BLINDS

---

Faux wood blinds are an excellent and economical alternative to wood blinds for many applications and offer a long lasting performance. The Whites & Neutrals and Premium Grain I colors are constructed of a durable engineered polymer material. Our Premium Grain II darker colors are constructed from acrylic styrene acrylonitrile (ASA). Lighter colors are constructed from a durable engineered polymer material.

Faux wood blinds are not intended for installation near heat sources such as radiators and heat registers which can potentially compromise the integrity of the faux wood material, or in locations where temperatures within the window casing will exceed 120 degrees Fahrenheit, including older single pane or aluminum frame windows that conduct and amplify outside heat into the window casing.

## // Faux Wood Blinds – 2" & 2-1/2"

### 2" WHITES & NEUTRALS

SIZE SPECIFICATIONS	Standard	Cordless XL	Cordless Lift & Lock™	Somfy Automation w/ Std Lift*
	2" & 2 - 1/2" Blinds			
Minimum Width (Center Tilt Only)	8"	8" - 11-7/8"	N/A	N/A
Minimum Width (Net)	8"	12"	10-1/2"	20"
Maximum Width (One Blind)	96"	96"	96"	96"
Minimum Height (Solid or Decorative Tape)	12"	N/A	N/A	12"
Minimum Height	12"	12"	12"	12"
Maximum Height	108"	96"	84"	96"
Maximum Width 2 on 1 Headrail	120"	N/A	120"	N/A
Maximum Continuous Valance Width (Not Spliced)	102"			
</				

*Blinds over Max SQ/FT require 2 on 1 headrail (where available)*

\*Automation is not available with Cordless Lift & Lock and Cordless XL

### 2" PREMIUM GRAINS I & II

SIZE SPECIFICATIONS	2" Standard	2" Cordless XL	2" Cordless Lift & Lock™	2" Somfy Automation w/ Std Lift*
Minimum Width (Center Tilt Only)	8"	8" - 11-7/8"	N/A	N/A
Minimum Width (Net)	8"	12"	10-1/2"	20"
Maximum Width (One Blind)	96"	96"	96"	96"
Minimum Height (Solid or Decorative Tape)	12"	N/A	N/A	22"
Minimum Height	10"	12"	12"	12"
Maximum Height	108"	96"	84"	96"
Max. AREA (SQ/FT)	50 sq/ft	49 sq/ft	40 sq/ft	50 sq/ft
Maximum Width 2 on 1 Headrail	120"	N/A	120"	N/A
Maximum Continuous Valance Width (Not Spliced)	102"			

*Blinds over Max SQ/FT require 2 on 1 headrail (where available)*

## INDIVIDUAL VALANCE ORDERING

2 & 2-1/2" Blinds				
Color Name	Color Number	STD Deco Valance	Crescent Valance	Modern Valance 3"
White	377	X	X	X
Extra White	378	X	X	X
Pure White	379	X	X	X
Roman White	380	X	X	X
Incredible White	381	X	X	X
Antique White	376	X	X	X
Ivory	374	X	X	X
Alabaster	375	X	X	X
Pewter	902	X	X	X
Warm Gray	903	X	X	X
Steel	905	X	X	X
Light Gray	901	X	X	X
Dark Gray	904	X	X	X
White Textured	T377	X	X	X
Pure White Textured	T379	X	X	X
Antique White Textured	T376	X	X	X
Pewter Textured	T902	X	X	X
Warm Gray Textured	T903	X	X	X
Gray Wash	362		X	X
Sea Mist	361		X	X
Ashwood	363		X	X
Pine	801			X
Maple	802			X
Smoke	803			X



3" Standard Decorative

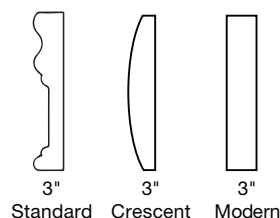


3" Crescent



3" Modern

Standard Decorative - 3" Profile  
 Crescent Valance - 3" Profile (optional)  
 Modern Valance - 3" Profile (Optional)



Standard   Crescent   Modern

# VALANCE AND VALANCE RETURN INFORMATION AND SPECIFICATIONS

## VALANCE ORDERING

Outside Mount	1" Added to valance, measured inside returns
Inside Mount	-1/8" (no returns)
Max Un-Spliced	102"
Max Spliced	168"* (Min 2 Splices)

Notes:

- Valances are cut to measure inside miter to ensure the most accurate fit when installed over the headrail or window frame.

## RETURN LENGTHS

Inside Mount Blind		3" Valance Standard Decorative • Crescent • Modern		Outside Mount Blind		3" Valance Standard Decorative • Crescent • Modern	
		Minimum	Maximum			Minimum	Maximum
Cordless XL	2" Faux	1/2"	6"	Cordless XL	2" Faux	3"	6"
	2-1/2" Faux*	3/4"	6"		2-1/2" Faux*	3-5/8"	6"
Cordlock & Cordless Lift & Lock™	2" Faux	1/2"	6"	Cordlock & Cordless Lift & Lock™	2" Faux	3"	6"
	2-1/2" Faux	1/2"	6"		2-1/2" Faux	3-3/8"	6"

- All valance profiles utilize magnetic valance clips. The magnetic valance clips have a projection adjustment feature. By pulling the clips outward, they can provide an additional 1/4" projection.

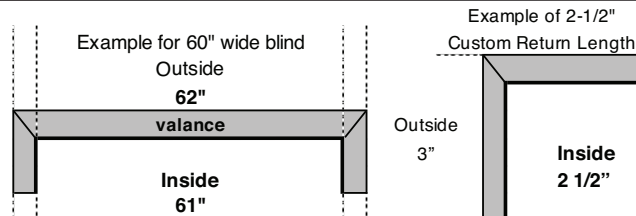
## ADJUSTED RETURN LENGTHS WITH SPACER BLOCKS & EXTENSION BRACKETS

3/8" Spacer Blocks (Small)	3-3/8"
3/4" Spacer Blocks (Large)	3-3/4"
3-7/8" Extension Brackets (Short)	4-1/4"
5-7/8" Extension Brackets (Long)	6-1/4"

Notes:

- \*3" Return Lengths are factory adjusted when extension brackets or (1 set of) spacer blocks are ordered.

## CUSTOM VALANCE RETURNS & RETURNS - MEASURED & CUT FROM THE INSIDE:



## KEYSTONE VALANCE OPTION

Keystones

Designed to cover splices in oversized valances. Use as a decorative look over any blind.

Valances under 102"

A color matched Keystone may be ordered with a valance. The valance will come assembled with the Keystone position in the center of valance.

Valances over 102"

A color matched Keystone will be included at no charge. Will require assembly.

Notes:

The addition of a keystone will not affect the overall width of the valance.

The color of the keystone will match valance.



Order Configuration		How Valance Will Be Produced
RETURN LENGTH OVERRIDE	IB	1" Wider than ordered size
	OB	1" Wider than ordered size ( no change from standard)
	NET (available for Valance only orders)	With Returns- exact, inside return to return No Returns - Exact
CONTINUOUS	IB	Valance will be exact size of continuous valance measurement
	OB	Inside return to return valance will be exact ordered width
	NET (available for Valance only orders)	With Returns- exact, inside return to return No Returns - Exact
CONTINUOUS with RETURN LENGTH OVERRIDE	IB	1" Wider than ordered size
	OB	Inside return to return valance will be exact ordered width
	NET (available for Valance only orders)	With Returns- exact, inside return to return No Returns - Exact

## SOLID AND DECORATIVE TAPES

### TAPES



### TAPE SPECIFICATIONS

- Made from a poly/cotton blend
- Resists fading or shrinking
- Lifetime Guarantee
- Decorative tapes are attached to a solid colored tape ladder. This ladder is slightly narrower than the width of the decorative ladder.
- The solid colored ladder is pre-selected. (see chart below)
- An adhesive is used to attach the decorative tape.
- The decorative tape is only applied to the ladder on the front of the blind. The back of the blind will have a solid color tape visible.

#### Solid Tapes

1-1/2" Solid Tape	Color Number
Alabaster	8113
Black	8899
Chocolate	8376
Dark Beige	8323
Dark Gray	8850
Light Beige	8322
Light Gray	8861
Pecan	8334
Steel	8867
Taupe	8302
White	8100

#### Decorative Tapes

1-1/2" Deco Tape	Color Number	Attached To
Dublin	6200	Alabaster
Hampton White	9000	White
Ivory Accent	911	Alabaster
Knit Canvas	4300	Alabaster
Knit Gray	4302	Light Gray
Knit Taupe	4301	Taupe
White Accent	910	White
1-1/4" Deco Tape	Color Number	Attached To
Stonewash Cocoa	5003	Light Beige
Stonewash Espresso	5005	Chocolate
Stonewash Gray	5002	Alabaster
Stonewash Khaki	5001	Alabaster

#### Solid and Decorative Tapes are not available with:

- LightsOut Routeless Feature
- Cordless XL
- Cordless Lift & Lock™



# PRODUCT SPECIFICATIONS

FEATURES	2"	2-1/2"
# of Colors	24	13
Headrail Size	1-1/2" x 2-1/4"	1-1/2" x 2-1/4"
Headrail Gauge	.024	.024
Bracket Style	Box	Box
Bottomrail - <b>Standard/ Cordless XL</b>	Trapezoid	Trapezoid
Bottomrail - <b>Cordless Lift &amp; Lock</b>	Vinyl	Vinyl
Ladder Space	44 mm	54 mm
Wand Tilt	Yes	Yes
Decorative Valance	Yes – 3"	Yes – 3"
Crescent Valance (Optional)	Yes – 3"	Yes – 3"
Modern Valance (Optional)	Yes – 3"	Yes – 3"
Valance Return Lengths (standard for outside mounts)	3"	3-3/8"
Adjustable Valance Attachment System	Yes	Yes
Decorative Tassel	Yes	Yes
Headrail End Stiffener	Yes	Yes
Break-Away Stop Ball	Yes	Yes
Warranty ( <i>Tilt motor systems are warranted for 5 years</i> )	Limited Lifetime	Limited Lifetime
Flame Resistant – NFPA #701 (2" & 2-1/2" Whites/ Neutrals & 2" Premium Grains I)	Yes	Yes

OPTIONS AND UPGRADES	2"	2-1/2"
Cordless XL - <b>not available</b> with tapes & LightsOut Routeless feature	Yes	Yes
Cordless Lift & Lock™ - <b>not available</b> with tapes & LightsOut Routeless feature	Yes	Yes
Somfy Automation System1 - <b>not available</b> with Cordless Lift & Lock™ & Cordless XL	Yes	Yes
LightsOut Routeless Slats1 - <b>not available</b> with tapes, Cordless lift, Cordless XL or Cordless Lift & Lock™	Yes	Yes
2 On 1 Headrail2 - <b>2-on-1 headrail not available</b> with Cordless lift & Cordless XL	Yes	Yes
Tapes (not available with LightsOut feature) - <b>not available</b> with Cordless lift, Cordless XL or Cordless Lift & Lock™	Yes	Yes
Crescent Valance Option	Yes	Yes
Modern Valance Option	Yes	Yes
Keystone Valance Option	Yes	Yes
CONTROL/MOUNTING OPTIONS	2"	2-1/2"
Cord Tilt (single blind)	Yes	Yes
Wand/Cord – Custom Lengths (single blind)	Yes	Yes (Cord Only)
Control Positions (single blind)	LR, RL or Grouped	LR, RL or Grouped
Tilt Control Position – Cordless XL (single blind)	L or R (Wand only) Under 12" net - <b>center tilt only</b>	L or R (Wand only) Under 12" net - <b>center tilt only</b>
Tilt Control Position – Cordless Lift & Lock™ (single blind)	L or R Under 12-1/2" net - <b>center tilt only</b>	L or R Under 12-1/2" net - <b>center tilt only</b>
Lift Control Position – Automation (Motor will be on opposite side)	L or R	L or R
Tile Cut-out(s) - <b>not available</b> with cordless Lift & Lock™ or cordless XL	Yes	Yes
Spacer Blocks (3/8" and 3/4" Depths)	Yes	3/8" Standard
Extension Brackets (Short & Long)	Yes	Yes
Hold-down Brackets - <b>not available</b> with 2-1/2" cordless Lift & Lock	Yes	Yes

2 on 1 Cordlock with Wand Tilt	Width (NET)	LEFT BLIND		RIGHT BLIND	
		WAND TILT	LIFT CORD	WAND TILT	LIFT CORD
	8" to 11-7/8"	C (only)	n/a	C (only)	n/a
	12" to 18"	R (only)	L (only)	L (only)	R (only)
	18-1/8" or more	L or R	L (only)	L or R	R (only)
2 on 1 Cordlock with Cord Tilt	Width (NET)	LEFT BLIND		RIGHT BLIND	
		CORD TILT	LIFT CORD	CORD TILT	LIFT CORD
	8" to 11-7/8"	N/A	N/A	N/A	N/A
	12" to 18"	N/A	N/A	N/A	N/A
	18-1/8" or more	L (only)	L (only)	R (only)	R (only)
2 on 1 Lift & Lock with Wand Tilt	Width (NET)	LEFT BLIND	Right Blind		
		WAND TILT	WAND TILT		
	10-1/2" to 12-3/8"	C (only)	C (only)		
	12-1/2" or more	L or R	L or R		
2 on 1 Lift & Lock with Cord Tilt	Width (NET)	LEFT BLIND	Right Blind		
		CORD TILT	CORD TILT		
	10-1/2" to 12-3/8"	C (only)	C (only)		
	12-1/2" or more	L (only)	R (only)		

FOOTNOTES (FEATURES & SPECIFICATIONS)	
1	The <b>LightsOut</b> configuration may cause slight "puckering" of the <b>lift cords</b> on the front of the blind when the slats are tilted backwards (reverse tilt) due to the use of interlacing cords on the front (the back uses looped ladders). A gentle tug down on the lift cord tassel will eliminate any puckering. The slats on LightsOut routeless blinds feature notches in the slat instead of route holes. Regardless of blind size, there will notches in the front and rear of the slat on the far right and far left ladders only, approximately 6" in from the end of the slat.
2	There will be a 1/2" maximum light gap between multiple blinds on 1 headrail. 2 on 1 headrail not available with the Automation upgrades.
Wood tone blinds will include Antique Brass tape clamps and White/Neutral tone blinds will include White tape clamps on the bottomrail.	



## SIZE SPECIFICATIONS

STANDARD RECTANGULAR	2"	2-1/2"
Minimum Width (Net)	8" 12" with Tapes	
Maximum Width (One blind)	96"	
Minimum Height	12"	
Maximum Height	108"	
Max. AREA (SQ/FT) (Blinds over 50 SQ/FT require 2 on 1 headrail)	50 sq/ft	
Maximum Width 2 on 1 Headrail	120"	
Maximum Continuous Valance Width (not spliced)	102"	

Cordless XL	2"	2-1/2"
Minimum Width (Net)	8" - 11-7/8" (Tilt Only No Lift) 12"	
Maximum Width (One blind)	96"	
Minimum Height	12"	
Maximum Height	96"	
Maximum AREA (SQ/FT)	49 sq/ft	39 sq/ft
Maximum Width 2 on 1 Headrail	N/A	
Maximum Continuous Valance Width (not spliced)	120"	

CORDLESS LIFT & LOCK™	2"	2-1/2"
Minimum Width (Net)	10-1/2"	
Maximum Width (One blind)	96"	
Minimum Height	12"	
Maximum Height	84"	
Maximum AREA (SQ/FT)	40 sq/ft	31 sq/ft
Maximum Width 2 on 1 Headrail	120"	
Maximum Continuous Valance Width (not spliced)	102"	

Somfy Automation	2" w/ Std Lift	2-1/2" w / Std Lift
Minimum Width (Net)	20" 22" with Tapes	20" 22" with Tapes
Maximum Width (One blind)	96"	96"
Maximum Height	96"	96"
Maximum AREA (SQ/FT)	50 sq/ft	50 sq/ft
Maximum Continuous Valance Width (not spliced)	102"	102"

## FINISHED DIMENSIONS

Adjustments are taken from ordered dimensions and may vary slightly.

Inside (IB) Mount	
Headrail width <sup>1</sup>	- 3/4"
Blind width	- 1/2"
Blind height	ordered height
Valance	- 1/8"
Outside (OB) Mount	
Headrail width <sup>1</sup>	- 1/4"
Blind width	ordered width
Blind height	ordered height
Valance	+ 1"
2 on 1 Headrail	
Gap between panels	- 1/2"

## MOUNTING REQUIREMENTS

Use a metal tape measure for all measurements.

Inside (IB) Mount	
Minimum mounting depth: 2"	1-1/8"
Minimum mounting depth: - 2-1/2"	1-1/4"
Minimum mounting depth, flush mount - 2" Slat:	3-1/2"
Minimum mounting depth, flush mount - 2-1/2" Slat:	3-3/4"
Outside (OB) Mount	
Minimum flat vertical surface:	1-3/4"

### FOOTNOTE

1 The headrail width has a 1/4" deduction on outside mounts and 3/4" deduction on inside mounts to accommodate the installation brackets.

# CONTROL CHARTS – STANDARD CORD LIFT

## TILT CORD (OPTIONAL)

- Cords are **color-coordinated** with slats
- Standard tilt cord lengths are 40% of the blind height as required by child safety standards. Customized lengths are available upon request.
  - For 2" blinds, minimum cord length is 10". For blinds under 15" in height, a cord length override to at least 10" must be requested.
  - For 2-1/2" blinds, minimum cord length is 10". For blinds under 24-3/4" in height, a cord length override to at least 10" must be requested.
- For Somfy Automation, the tilt function is controlled by remote unit

### CONTROL POSITIONS:

Tilt Cord center and no Lift Cord\*  
 Tilt Cord **left** / Lift Cord **right** (standard)  
 Lift Cord **left** / Tilt Cord **right**  
 Tilt & Lift Cords *grouped left*  
 Tilt & Lift Cords *grouped right*

Min. Width (NET)
Under 12"
12"
12"
18-1/8"
18-1/8"

\* Available on 2" blinds only

## TILT WAND (STANDARD)

- Tilt wands are **color-coordinated** with slats
- Chart shows standard lengths.
- For Somfy Automation, tilt function is controlled by remote unit
- Tilt Length Override – specify length when ordering

Color wands up to 48" long. Clear in 60", 72", 84".  
 Wand length optional. Specify above optional lengths when ordering.

2" & 2-1/2" Faux	
Wand Length	Blind Height
12"	12" to 24"
20"	24 1/8" to 36"
24"	36 1/8" to 48"
36"	48 1/8" to 72"
48"	72 1/8" to 96"

Lift Cord Control – Standard lift cord length is 40% of the blind height as required by child safety standards. Customized lengths are available upon request. Minimum cord length is 10". For blinds under 15" in height, a cord length override to at least 10" must be requested.

## LADDER/TAPE PLACEMENT CHARTS

The chart shows the number of ladders and routes based on the NET width of the blind.

2" & 2-1/2" Faux		
Blind Width	# of Ladders	# of Routes
8" to 20" **	2	2
20-1/8" to 32"	3	2
32-1/8" to 44"	4	4
44-1/8" to 56"	5	4
56-1/8" to 68"	6	4
68-1/8" to 80"	7	4
80-1/8" to 96"	8	4

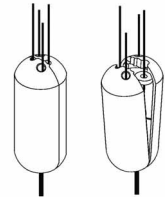
\*\*Under 12" NET for 2" slats only

\*\*Routes are positioned approximately 2" from the end of the slat for blinds less than 12 1/8" wide, and 4" from the end of the slat for all others.  
 Exceptions are standard and LightsOut blinds with grouped controls will be approximately 4 1/2" from end of slat, and 4 3/4" for blinds with cloth tapes and grouped controls, and 6-5/8" for blinds with Bliss or Somfy Automation

## BREAK-AWAY STOP BALL

- Stop balls are standard for ALL lift cords.

The stop ball separates under pressure. It easily snaps together again.



## BOTTOMRAIL (STANDARD)

- 2" **Trapezoid** bottomrails are standard on faux wood blinds with **standard lift cords**

The "trapezoid" bottomrail provides a contoured, modern look along with improved blind operation (slat tilting & rotating).

Trapezoid Bottomrail



## STACK-UP-CHART (APPROXIMATE)

The charts below show the stacking height of the slats when the blind is fully raised. **Add in HR+BR for total.**

- Headrail+Bottomrail = 2-1/2"

2" Faux	
Blind Height	Stack Height
48"	5"
72"	7-1/2"
84"	9-1/4"
96"	10-7/8"

2-1/2" Faux	
Blind Height	Stack Height
48"	4"
72"	6-1/4"
84"	7-1/2"
96"	9"

PLUS + 2-1/2"

PLUS + 2-1/2"

## SQUARE FOOTAGE SPECIFICATIONS

### 2" FAUX

WIDTH TO:	24	28	32	36	42	48	54	60	66	72	78	84	90	96
HEIGHT TO:														
30	5	6	7	8	9	10	11	13	14	15	16	18	19	20
36	6	7	8	9	11	12	14	15	17	18	20	21	23	24
42	7	8	9	11	12	14	16	18	19	21	23	25	26	28
48	8	9	11	12	14	16	18	20	22	24	26	28	30	32
54	9	11	12	14	16	18	20	23	25	27	29	32	34	36
61	10	12	14	15	18	20	23	25	28	31	33	36	38	41
66	11	13	15	17	19	22	25	28	30	33	36	39	41	44
73	12	14	16	18	21	24	27	30	33	37	40	43	46	49
78	13	15	17	20	23	26	29	33	36	39	42	46	49	N/A
84	14	16	19	21	25	28	32	35	39	42	46	49	N/A	N/A
90	15	18	20	23	26	30	34	38	41	45	49	N/A	N/A	N/A
96	16	19	21	24	28	32	36	40	44	48	N/A	N/A	N/A	N/A

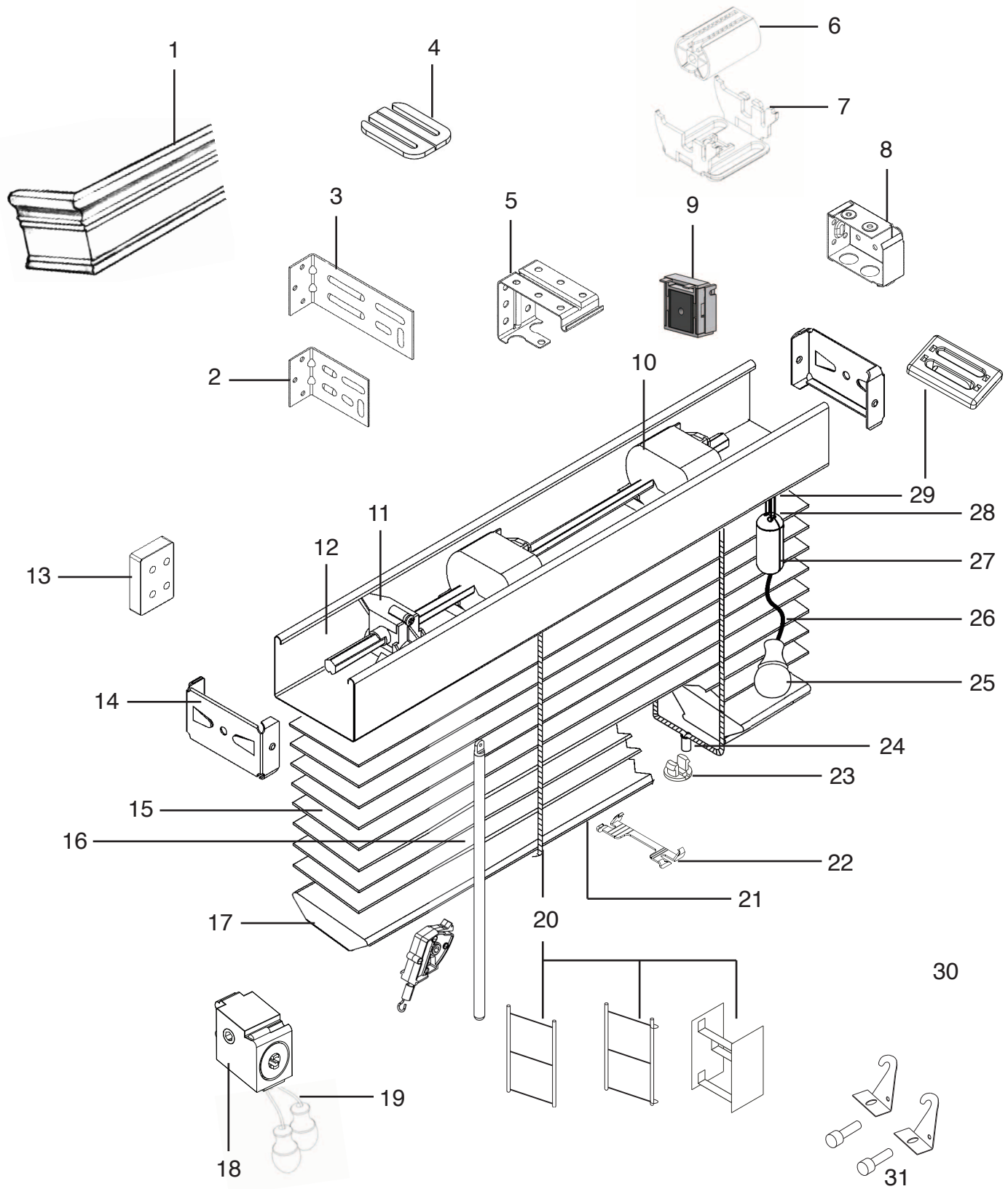
Max Square Footage 50

### 2-1/2" FAUX

WIDTH TO:	24	28	32	36	42	48	54	60	66	72	78	84	90	96
HEIGHT TO:														
30	5	6	7	8	9	10	11	13	14	15	16	18	19	20
36	6	7	8	9	11	12	14	15	17	18	20	21	23	24
42	7	8	9	11	12	14	16	18	19	21	23	25	26	28
48	8	9	11	12	14	16	18	20	22	24	26	28	30	32
54	9	11	12	14	16	18	20	23	25	27	29	32	34	36
61	10	12	14	15	18	20	23	25	28	31	33	36	38	41
66	11	13	15	17	19	22	25	28	30	33	36	39	41	44
73	12	14	16	18	21	24	27	30	33	37	40	43	46	49
78	13	15	17	20	23	26	29	33	36	39	42	46	49	N/A
84	14	16	19	21	25	28	32	35	39	42	46	49	N/A	N/A
90	15	18	20	23	26	30	34	38	41	45	49	N/A	N/A	N/A
96	16	19	21	24	28	32	36	40	44	48	N/A	N/A	N/A	N/A

Max Square Footage 50

# PRODUCT COMPONENTS – STANDARD RECTANGULAR



**\*NOTE:** 1 Center Support Bracket required for blind sizes 48-1/8" to 60" and 2 brackets required for blind sizes 60-1/8" and over.

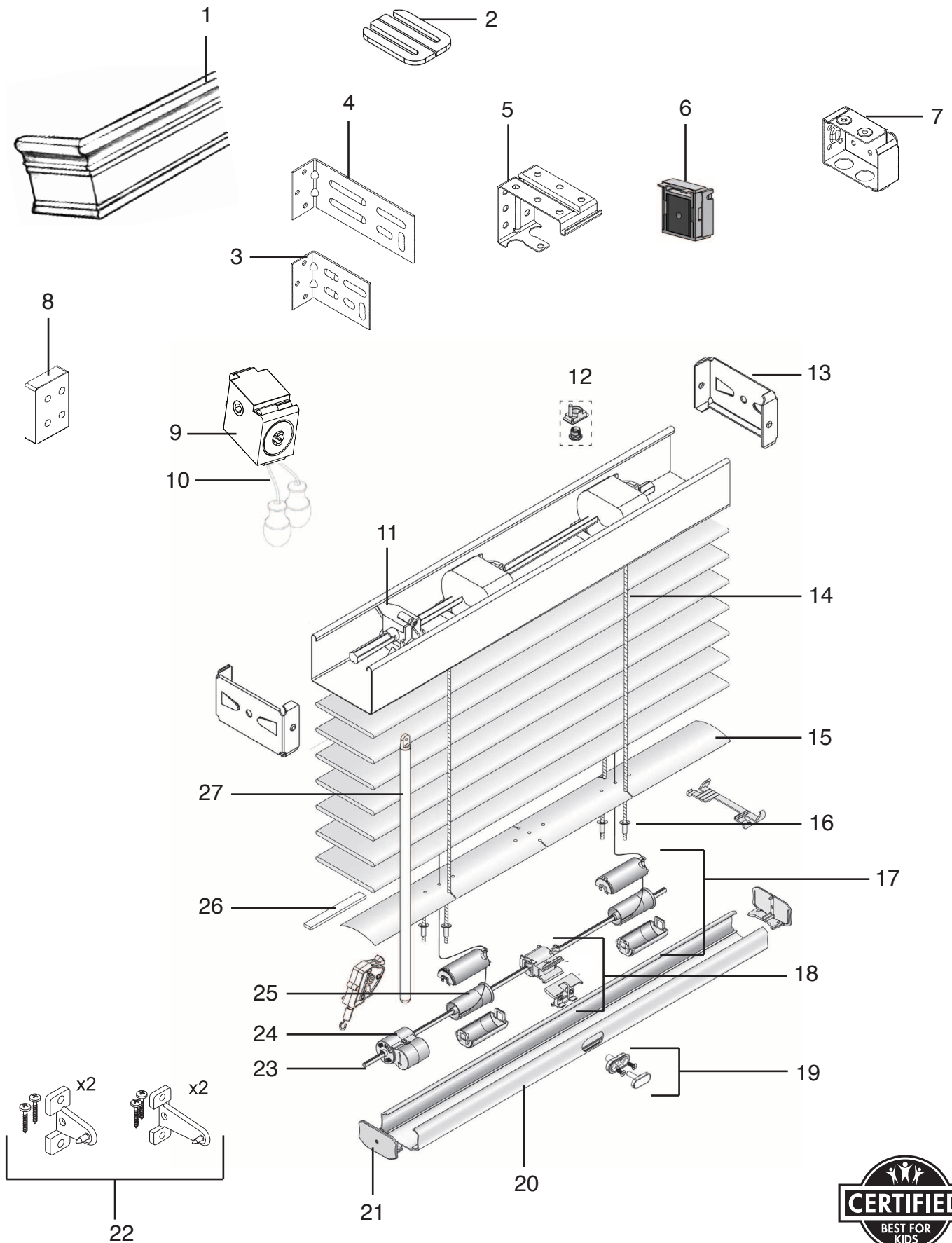
---

## PRODUCT COMPONENTS – STANDARD RECTANGULAR

---

1. Valance
2. 3-7/8" Short Extension Brackets  
2 Pack (Part #KIT4380)  
3 Pack (Part #KIT4381)  
(Not required on every blind)
3. 5-7/8" Long Extension Brackets  
2 Pack (Part #KIT4382)  
3 Pack (Part #KIT4383)  
(Not required on every blind)
4. Bracket Shim  
2 Pack (Part #KIT-SHIM-2PK)  
3 Pack (Part #KIT-SHIM-3PK)
5. Center Support Bracket\*  
1 Pack (Part #KIT-INTSUP-1PK)  
2 Pack (Part #KIT-INTSUP-2PK)
6. Deco Tape Drum
7. Deco Tape Drum Support
8. Installation Bracket (Part #KIT-8COLOR)
9. Magnetic Valance Clip  
2 Pack (Part #KIT-MAGCLIP-2PK)  
3 Pack (Part #KIT-MAGCLIP-3PK)
10. Tape Drum  
(Part#1029362) Right Handed Lift  
(Part#1029363) Left Handed Lift
11. Wand Tilter  
(Part# 1029366 2")  
(Part# 1030638 2.5")
12. Slim Design Headrail
13. Spacer Blocks  
3/8" Spacer Block  
2 Pack (Part #KIT-38BLOCK-2PK)  
3 Pack (Part #KIT-38BLOCK-3PK)  
3/4" Spacer Block  
2 Pack (Part #KIT-BLOCK-2PK)  
3 Pack (Part #KIT-BLOCK-3PK)
14. End Lock End Stiffener (Part #5003655000S)
15. Faux Wood Slat
16. Tilt Wands  
See page 10 for options  
  
Clear Wands  
60" - (Part #1030286)  
72" - (Part #1030287)  
84" - (Part #1030288)
17. Trapezoid Bottomrail
18. Cord Tilter (Beige) (Part #5003875000)
19. Tilt Cord  
**NOTE:** Specify cord color if needed.
20. Braided Ladder  
No Loop Cable Tape (Standard)  
Single Loop Cable Tape (LightsOut)  
Solid or Decorative Tape Ladder
21. Bottomrail
22. 2" Top Slat Clip (Part #7007074000S)  
2-1/2" Top Slat Clip (Part #SC-2.5)
23. Tape Buttons
24. Brass Eyelet Ladder Crimp (Part #12-70-9002)
25. Wood Tassel (Part # 17-90-1COLOR)
26. Pull Cord
27. Break-Away Stop Ball (Part #7007736-COLOR)
28. Lift Cords
29. Cord Lock Assembly (Part #L-CK-U1)  
Cordlock Separator (Part #1035511)
30. Not Shown:  
Bottomrail Tape Lock (Part #20-0261-000)
31. Hold-down Bracket Set  
White (Part #KIT-HOLDBRKTWT)  
Zinc (Part #2KIT-HOLDBRKTZC)  
Hold-down Pin (Part #12-70-3009)  
(Not required on every blind)
32. Edge cordlock protector

# PRODUCT COMPONENTS – CORDLESS LIFT & LOCK™ SYSTEM



\*when ordered with wand tilt

---

## PRODUCT COMPONENTS – CORDLESS LIFT & LOCK™ SYSTEM

---

- |   |  |
|---|--|
| <p>1. Valance</p> <p>2. Bracket Shim<br/>2 Pack (Part #KIT-SHIM-2PK)<br/>3 Pack (Part #KIT-SHIM-3PK)</p> <p>3. 3-7/8" Short Extension Brackets<br/>2 Pack (Part #KIT4380)<br/>3 Pack (Part #KIT4381)<br/>(Not required on every blind)</p> <p>4. 5-7/8" Long Extension Brackets<br/>2 Pack (Part #KIT4382)<br/>3 Pack (Part #KIT4383)<br/>(Not required on every blind)</p> <p>5. Center Support Bracket<br/>1 Pack (Part #KIT-INTSUP-1PK)<br/>2 Pack (Part #KIT-INTSUP-2PK)</p> <p>6. Magnetic Valance Clip<br/>2 Pack (Part #KIT-MAGCLIP-2PK)<br/>3 Pack (Part #KIT-MAGCLIP-3PK)</p> <p>7. Installation Bracket (Part #KIT-8-COLOR)</p> <p>8. Spacer Blocks<br/>3/8" Spacer Block<br/>2 Pack (Part #KIT-38BLOCK-2PK)<br/>3 Pack (Part #KIT-38BLOCK-3PK)<br/>3/4" Spacer Block<br/>2 Pack (Part #KIT-BLOCK-2PK)<br/>3 Pack (Part #KIT-BLOCK-3PK)</p> <p>9. Cord Tilter (Beige)(Part #5003875000)</p> <p>10. Tilt Cord</p> <p>11. Wand Tilter<br/>(Part # 1029366 2")<br/>(Part # 1030638 2.5")</p> <p>12. Cord Skew Adjuster (Part#7300501000)</p> <p>13. End Stiffener (Part #5003655000S)</p> <p>14. No Loop Cable Tape</p> <p>15. 2" Aluminum Slat (Part #5001200885H)</p> <p>16. 2" Cable Tape Grommet (Part #12-70-9002)</p> <p>17. Support and Cover Set (Part #7300405000)</p> <p>18. 2" Lock Assembly (Part #7300404000)</p> <p>19. Lift &amp; Lock Button Set (Part #7300406COLOR)</p> <p>20. Lift &amp; Lock Bottomrail (Part #5003024COLOR)</p> <p>21. Lift &amp; Lock Bottomrail End Cap (See Bottomrail Color Chart)</p> <p>22. 2" Lift &amp; Lock Hold Down Brackets<br/>Sill - 3/8" (Part #KIT2009)<br/>Jamb - 3/4" (Part #KIT2010)</p> <p>23. "V" Tiltrod (Part #2770004000)</p> <p>24. Lift &amp; Lock Motor<br/>(Part #7300402000 Beige)<br/>(Part #7300401000 Black)</p> <p>25. Lift &amp; Lock Lift Spool (Part #1019884)</p> <p>26. Foam Tape</p> | <p>27. Tilt Wands<br/>See page 10 for options</p> <p>Clear Wands<br/>60" - (Part #1030286)<br/>72" - (Part #1030287)<br/>84" - (Part #1030288)</p> |
|---|--|

---

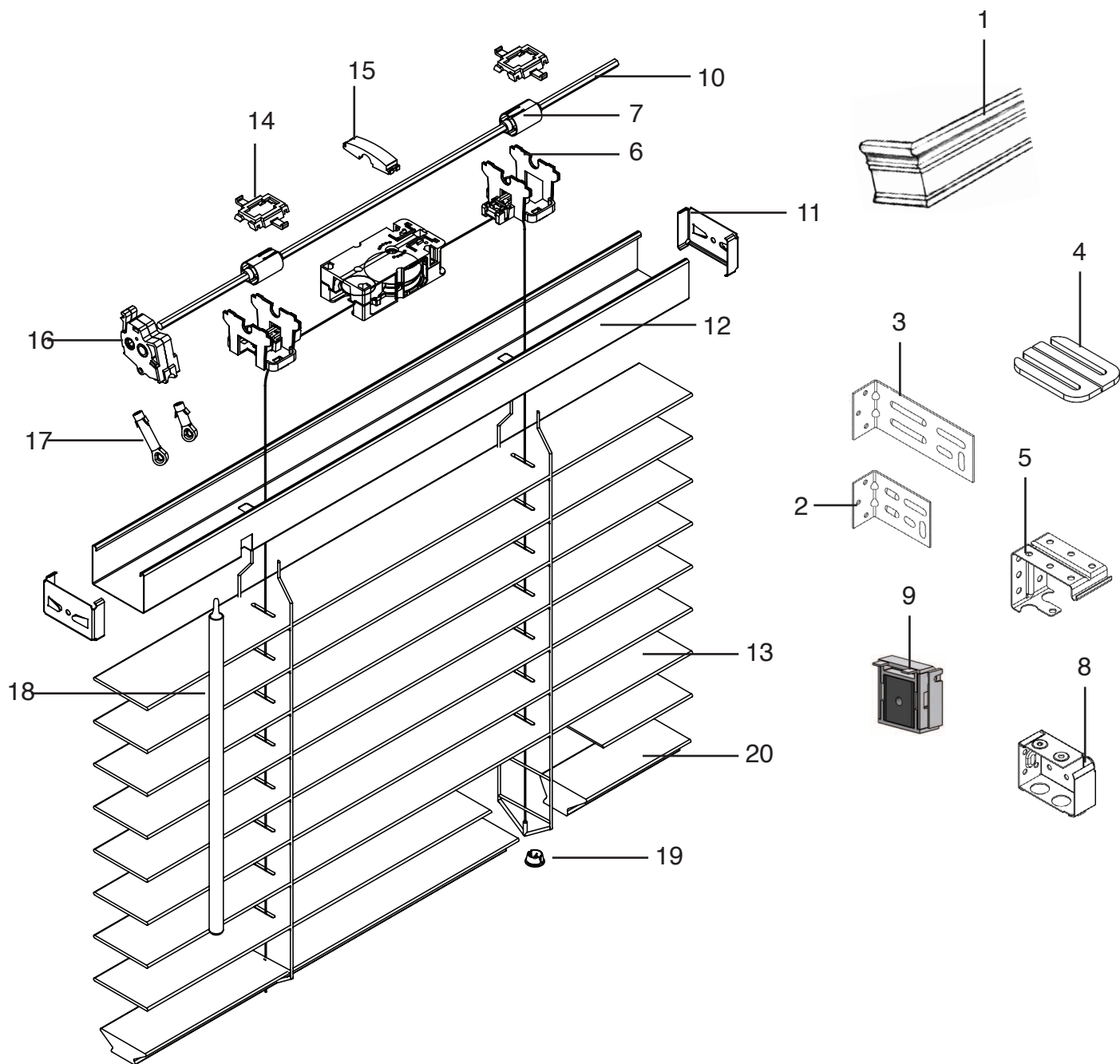
## PRODUCT COMPONENTS – CORDLESS LIFT SYSTEM

---

1. Valance
2. Center Support Bracket  
1 Pack (Part #KIT-INTSUP-1PK)  
2 Pack (Part #KIT-INTSUP-2PK)  
(Not required on every blind)
3. Bracket Shim  
2 Pack (Part #KIT-SHIM-2PK)  
3 Pack (Part #KIT-SHIM-3PK)  
(Not required on every blind)
4. Magnetic Valance Clip  
2 Pack (Part #KIT-MAGCLIP-2PK)  
3 Pack (Part #KIT-MAGCLIP-3PK)
5. Motor Set  
Gray (Part #1010231)  
Beige (Part # 1010234)  
Black (Part # 1010230)  
Natural (Part # 1010233)  
Red (Part # 1010232)
6. Installation Bracket (Part #KIT-8COLOR)
7. Metal Clamp (Part #7300139000)
8. Pre-installed Cordless Transmission  
Clear (Part #7300185001)  
Beige (Part #7300221001)
9. Hold-down Bracket Set  
White (Part #KIT-HOLDBRKTWT)  
Zinc (Part #KIT-HOLDBRKTZC)  
(Not required on every blind)
10. Hold-down Pin (Part #12-70-3009)
11. Lift and Tilt Roll Assembly
12. Bottomrail
13. Braided Ladder
14. Tilt Cords **NOTE:** Specify cord color if needed.
15. Wood Tassels (Part #17-90-1COLOR)
16. Tilt Wands  
See page 10 for options  
  
Clear Wands  
60" - (Part #1030286)  
72" - (Part #1030287)  
84" - (Part #1030288)
17. Wood Slat
18. End Stiffener (Part #5003655000S)
19. Slim Design Headrail
20. Short Extension Brackets  
2 Pack (Part #KIT4380)  
3 Pack (Part #KIT4381)  
(Not required on every blind)
21. Long Extension Brackets  
2 Pack (Part #KIT4382)  
3 Pack (Part #KIT4383)  
(Not required on every blind)



## PRODUCT COMPONENTS – CORDLESS XL



---

## PRODUCT COMPONENTS – CORDLESS XL

---

- |   |  |
|---|--|
| 1. Valance  | 19. Tape Buttons (Part #7004034-COLOR) |
| 2. 3-7/8" Short Extension Brackets<br>2 Pack (Part #KIT4380)<br>3 Pack (Part #KIT4381)<br>(Not required on every blind)       | 20. Trapezoid Bottomrail               |
| 3. 5-7/8" Long Extension Brackets<br>2 Pack (Part #KIT4382)<br>3 Pack (Part #KIT4383)<br>(Not required on every blind)        |  |
| 4. Bracket Shim<br>2 Pack (Part #KIT-SHIM-2PK)<br>3 Pack (Part #KIT-SHIM-3PK)<br>(not required on every blind)                |  |
| 5. Center Support Bracket*<br>1 Pack (Part #KIT-INTSUP-1PK)<br>2 Pack (Part #KIT-INTSUP-2PK)<br>(not required on every blind) |  |
| 6. Drum Support<br>(Part # 1030196) with steal pin<br>(Part # 1030197) without steal pin                                      |  |
| 7. Tape Roll<br>(Part # 1030198)  |  |
| 8. Installation Bracket (Part #KIT-8-COLOR)   |  |
| 9. Magnetic Valance Clip<br>2 Pack (Part #KIT-MAGCLIP-2PK)<br>3 Pack (Part #KIT-MAGCLIP-3PK)                                  |  |
| 10. Tilt Rod  |  |
| 11. End Lock End Stiffener (Part #5003655000S)  |  |
| 12. Headrail  |  |
| 13. Slat  |  |
| 14. Ladder Stopper<br>(Part # 1030199)  |  |
| 15. Motor Plate Press<br>(Part # 1030202)   |  |
| 16. Wand Tilter<br>(Part # 1030195)   |  |
| 17. Wand Tilt Stem<br>2" (Part # 1030205)<br>2.5" (Part # 1030206)  |  |
| 18. Plastic Wand<br>See Options Below   |  |

# CONTROL CHARTS – CORDLESS XL

## TILT WAND (STANDARD)

- A Cordless XL plastic tilt wand is color- coordinated with slats
- Chart shows standard lengths.

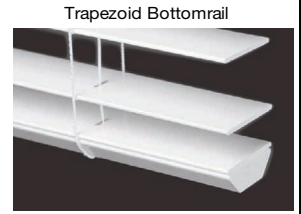
2" & 2-1/2" Faux	
Wand Length	Blind Height
12"	12" to 24"
20"	24 1/8" to 36"
24"	36 1/8" to 48"
36"	48 1/8" to 72"
48"	72 1/8" to 96"

No additional wand sizes available.

## BOTTOMRAIL – CORDLESS XL

- 2" Trapezoid bottom rails are standard on faux blinds with cordless XL

The "trapezoid" bottomrail provides a contoured, modern look along with improved blind operation (slat tilting & rotating).



## LADDER/TAPE PLACEMENT CHARTS

The chart shows the number of ladders and routes based on the NET width of the blind.

2" Faux		
Blind Width	# of Ladders	# of Routes
8" to 22"	2	2
22-1/8" to 34"	3	2
34-1/8" to 40"	4	2
40-1/8" to 46"	4	4
46-1/8" to 58"	5	4
58-1/8" to 70"	6	4
70-1/8" to 82"	7	4
82-1/8" to 96"	8	4

The chart shows the end routes and the tilter route position based on the NET width of the headrail. The tilter route is from the end of the headrail.

Blind Width	End Routes	Tilter Route
8" to 11-7/8"	2-1/2"	Centered
12" to 13-7/8"	2-1/2"	1-1/4"
14" to 16"	3"	1-1/4"
16-1/8" to 20"	4-1/2"	1-1/2"
21-1/8" to 96"	5"	1-1/2"

2-1/2" Faux		
Blind Width	# of Ladders	# of Routes
8" to 22"	2	2
22-1/8" to 34"	3	2
34-1/8" to 40"	4	2
40-1/8" to 46"	4	4
46-1/8" to 58"	5	4
58-1/8" to 70"	6	4
70-1/8" to 82"	7	4
82-1/8" to 96"	8	4

Blind Width	End Routes	Tilter Route
8" to 11-7/8"	2-1/2"	Centered
12" to 13-7/8"	2-1/2"	1-1/4"
14" to 16"	3"	1-1/4"
16-1/8" to 20"	4-1/2"	1-1/2"
20-1/8" to 96"	5"	1-1/2"

\*\* The tilter route is from the end of the headrail \*\*

## STACK-UP-CHART (APPROXIMATE)

The charts below show the stacking height of the slats when the blind is

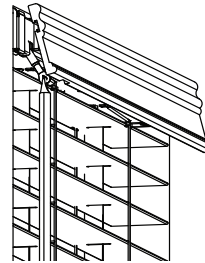
2" Faux	
Blind Height	Stack Height
48"	5"
72"	7-1/2"
84"	9-1/4"
96"	10-7/8"

PLUS	+ 2-1/2"
------	----------

2-1/2" Faux	
Blind Height	Stack Height
48"	4"
72"	6-1/4"
84"	7-1/2"
96"	9"

PLUS	+ 2-1/2"
------	----------

## VALANCE



- All valance profiles ordered over 2-1/2" Cordless XL will be notched for better clearance.

## SQUARE FOOTAGE SPECIFICATIONS

### 2" FAUX

WIDTH TO:	24	28	32	36	42	48	54	60	66	72	78	84	90	96
HEIGHT TO:	5	6	7	8	9	10	11	13	14	15	16	18	19	20
30	5	6	7	8	9	10	11	13	14	15	16	18	19	20
36	6	7	8	9	11	12	14	15	17	18	20	21	23	24
42	7	8	9	11	12	14	16	18	19	21	23	25	26	28
48	8	9	11	12	14	16	18	20	22	24	26	28	30	32
54	9	11	12	14	16	18	20	23	25	27	29	32	34	36
61	10	12	14	15	18	20	23	25	28	31	33	36	38	41
66	11	13	15	17	19	22	25	28	30	33	36	39	41	44
73	12	14	16	18	21	24	27	30	33	37	40	43	46	49
78	13	15	17	20	23	26	29	33	36	39	42	46	49	N/A
84	14	16	19	21	25	28	32	35	39	42	46	49	N/A	N/A
90	15	18	20	23	26	30	34	38	41	45	49	N/A	N/A	N/A
96	16	19	21	24	28	32	36	40	44	48	N/A	N/A	N/A	N/A

Max Square Footage 49

### 2-1/2" FAUX

WIDTH TO:	24	28	32	36	42	48	54	60	66	72	78	84	90	96
HEIGHT TO:	5	6	7	8	9	10	11	13	14	15	16	18	19	20
30	5	6	7	8	9	10	11	13	14	15	16	18	19	20
36	6	7	8	9	11	12	14	15	17	18	20	21	23	24
42	7	8	9	11	12	14	16	18	19	21	23	25	26	28
48	8	9	11	12	14	16	18	20	22	24	26	28	30	32
54	9	11	12	14	16	18	20	23	25	27	29	32	34	36
61	10	12	14	15	18	20	23	25	28	31	33	36	38	N/A
66	11	13	15	17	19	22	25	28	30	33	36	39	N/A	N/A
73	12	14	16	18	21	24	27	30	33	37	N/A	N/A	N/A	N/A
78	13	15	17	20	23	26	29	33	36	39	N/A	N/A	N/A	N/A
84	14	16	19	21	25	28	32	35	39	N/A	N/A	N/A	N/A	N/A
90	15	18	20	23	26	30	34	38	N/A	N/A	N/A	N/A	N/A	N/A
96	16	19	21	24	28	32	36	N/A	N/A	N/A	N/A	N/A	N/A	N/A

Max Square Footage 39

## CONTROL CHARTS – SOMFY AUTOMATION

### CONTROLS

- Lift cords are **color coordinated** with slats
- Standard lift cord lengths are 40% of the blind height as required by child safety standards. Customized lengths are available upon request.
  - For 2" blinds, minimum cord length is 10". For blinds under 15" in height, a cord length override to at least 10" must be requested.
  - For 2-1/2" blinds, minimum cord length is 10". For blinds under 24-3/4" in height, a cord length override to at least 10" must be requested.
- For motorized blinds, tilt is controlled by remote unit

#### CONTROL POSITIONS:

Lift Cord **right** (standard) or **left**

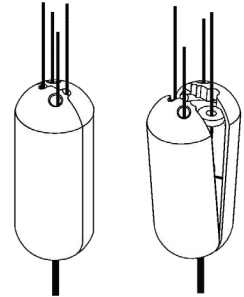
Min. Width
20"
22" with Tapes

Motor position will be on the opposite side of Lift Cord

### BREAK-AWAY STOP BALL

- Stop balls are standard for ALL lift cords.

The stop ball separates under pressure. It easily snaps together again.



### LADDER/TAPE PLACEMENT CHARTS

The chart shows the number of ladders and routes based on the NET width of the blind.

2" & 2-1/2" FAUX		
Blind Width	# of Ladders	# of Routes
20" to 24"	2	2
24-1/8" to 36"	3	2
36-1/8" to 48"	4	4
48-1/8" to 60"	5	4
60-1/8" to 72"	6	4
72-1/8" to 84"	7	4
84-1/8" to 96"	8	4

\*\*Routes approximately 6-5/8" from the end of the slat.

### STACK-UP CHART (Approximate)

The charts below show the stacking height of the slats when the blind is fully raised. **Add in HR+BR for total.**

- Headrail+Bottomrail = 2-1/2"

2" Faux	
Blind Height	Stack Height
48"	5"
72"	7-1/2"
84"	9-1/4"
96"	10-7/8"

2 1/2" Faux	
Blind Height	Stack Height
48"	4"
72"	6-1/4"
84"	7-1/2"
96"	9"

# CONTROL CHARTS – CORDLESS LIFT & LOCK SYSTEM

## TILT CORD (OPTIONAL)

- Cords are **color-coordinated** with slats
- Standard tilt cord lengths are 40% of the blind height as required by child safety standards. Customized lengths are available upon request.
  - For 2" blinds, minimum cord length is 10". For blinds under 15" in height, a cord length override to at least 10" must be requested.
  - For 2-1/2" blinds, minimum cord length is 10". For blinds under 24-3/4" in height, a cord length override to at least 10" must be requested.
- For cordless Lift & Lock the lift function is controlled by the bottomrail

### CONTROL POSITIONS:

Tilt Cord **center ONLY**

Tilt **Left or Right ONLY**

### Min. Width (NET)

10-1/2" to 12-3/8"

12-1/2" and more

## TILT WAND (STANDARD)

- Tilt wands are **color-coordinated** with slats
- Chart shows standard lengths.
- Tilt Length Override (Optional) – specify length when ordering

Color wands up to 48" long. Clear in 60", 72", 84".

Wand length optional. Specify above optional lengths when ordering.

### 2" & 2-1/2" Faux

Wand Length	Blind Height
12"	12" to 24"
20"	24 1/8" to 36"
24"	36 1/8" to 48"
36"	48 1/8" to 72"
48"	72 1/8" to 96"

## LADDER/TAPE PLACEMENT CHARTS

The chart shows the number of ladders and routes based on the NET width of the blind.

2" & 2-1/2" Faux		
Blind Width	# of Ladders	# of routes
10-1/2" to 12-1/2"	2	2
12-5/8" to 18"	2	2
18-1/8" to 21-1/2"	2	2
21-5/8" to 33-1/2"	3	2
33-5/8" to 45-1/2"	4	2
45-5/8" to 57-1/2"	5	4
57-5/8" to 69-1/2"	6	4
69-5/8" to 81-1/2"	7	4
81-5/8" to 96"	8	4

\*\*Routes are positioned approximately 2 1/2" from the end of the slat for blinds less than 12 1/2" wide, 3" from the end of the slat for blinds less than 18 1/8" wide, and 4 3/4" from the end of the slat for all others.

## BOTTOMRAIL – CORDLESS LIFT & LOCK™

- A **2" deep by 1" tall faux bottomrail** is standard
- Bottom rail colors are pre-selected. Color matched to slat color. Hardware override is not available
- Color coordinated end caps



## STACK-UP CHART (APPROXIMATE)

The charts below show the stacking height of the slats when the blind is fully raised. **Add in HR+BR for total.**

- Headrail+Bottomrail = 2-1/2"

2" Faux	
Blind Height	Stack Height
48"	5"
72"	7-1/2"
84"	9-1/4"

PLUS + 2-1/2"

2-1/2" Faux	
Blind Height	Stack Height
48"	4"
72"	6-1/4"
84"	7-1/2"

PLUS + 2-1/2"

## SQUARE FOOTAGE SPECIFICATIONS

### 2" FAUX

WIDTH TO:	24	28	32	36	42	48	54	60	66	72	78	84	90	96
HEIGHT TO:	5	6	7	8	9	10	11	13	14	15	16	18	19	20
30	5	6	7	8	9	10	11	13	14	15	16	18	19	20
36	6	7	8	9	11	12	14	15	17	18	20	21	23	1
42	7	8	9	11	12	14	16	18	19	21	23	25	26	28
48	8	9	11	12	14	16	18	20	22	24	26	28	30	32
54	9	11	12	14	16	18	20	23	25	27	29	32	34	36
61	10	12	14	15	18	20	23	25	28	31	33	36	38	N/A
66	11	13	15	17	19	22	25	28	30	33	36	39	N/A	N/A
73	12	14	16	18	21	24	27	30	33	37	40	N/A	N/A	N/A
78	13	15	17	20	23	26	29	33	36	39	N/A	N/A	N/A	N/A
84	14	16	19	21	25	28	32	35	39	N/A	N/A	N/A	N/A	N/A

Max Square Footage 40

### 2-1/2" FAUX

WIDTH TO:	24	28	32	36	42	48	54	60	66	72	78	84	90	96
HEIGHT TO:	5	6	7	8	9	10	11	13	14	15	16	18	19	20
30	5	6	7	8	9	10	11	13	14	15	16	18	19	20
36	6	7	8	9	11	12	14	15	17	18	20	21	23	24
42	7	8	9	11	12	14	16	18	19	21	23	25	26	28
48	8	9	11	12	14	16	18	20	22	24	26	28	30	N/A
54	9	11	12	14	16	18	20	23	25	27	29	N/A	N/A	N/A
61	10	12	14	15	18	20	23	25	28	N/A	N/A	N/A	N/A	N/A
66	11	13	15	17	19	22	25	28	30	N/A	N/A	N/A	N/A	N/A
73	12	14	16	18	21	24	27	30	N/A	N/A	N/A	N/A	N/A	N/A
78	13	15	17	20	23	26	29	N/A	N/A	N/A	N/A	N/A	N/A	N/A
84	14	16	19	21	25	28	N/A	N/A	N/A	N/A	N/A	N/A	N/A	N/A

Max Square Footage 31