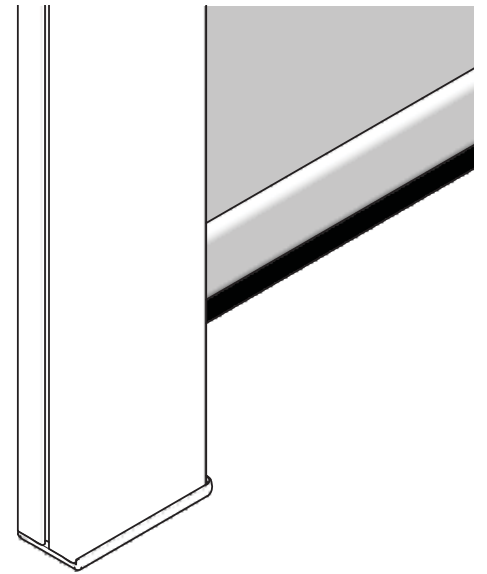
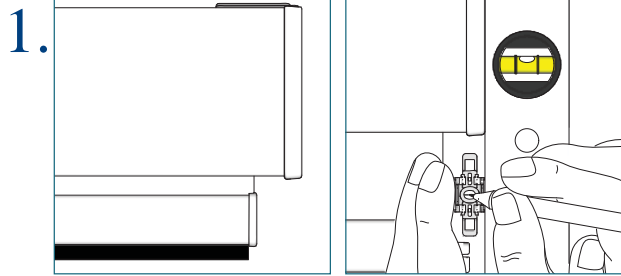


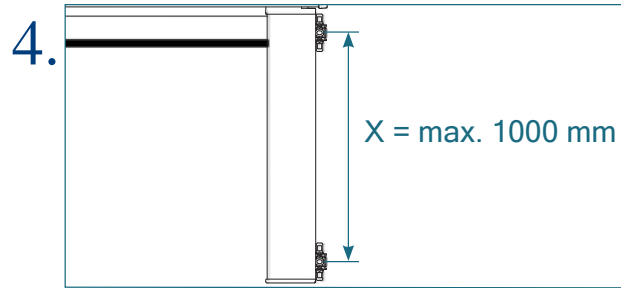
INSTALLATION INSTRUCTIONS
RB500 ROLLER SHADES
SIDE CHANNEL GUIDE



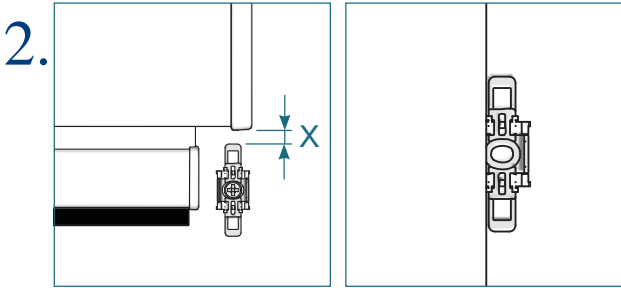
Installation with clip Outside wall mounting



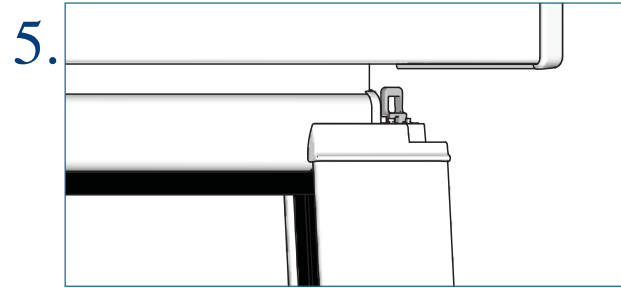
1. Install the roller shade. Level the clip flush with the end cap. Mark the horizontal position of the screw.



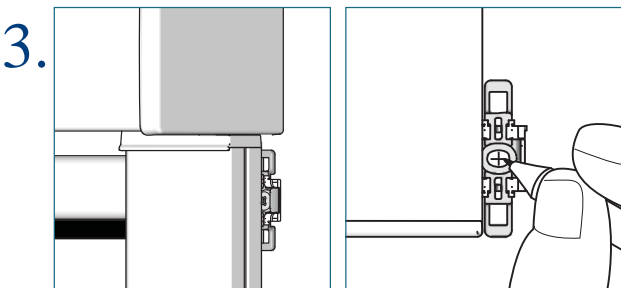
4. Fix the lower clip.



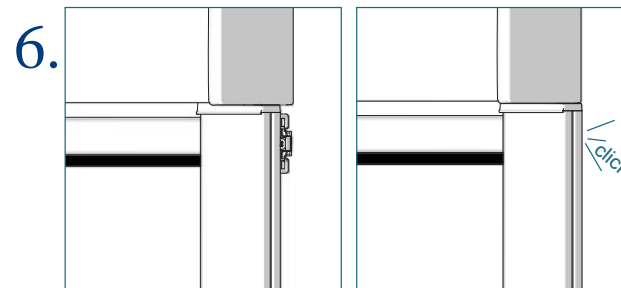
2. Fix the clip (with provided screw) with a distance $X = 5$ mm to the bottom of the end cap. Snap the other clips sidwise onto the side guiding channel.



5. Unclip the side guiding channel. Place the bottom rail into the side guiding channel.

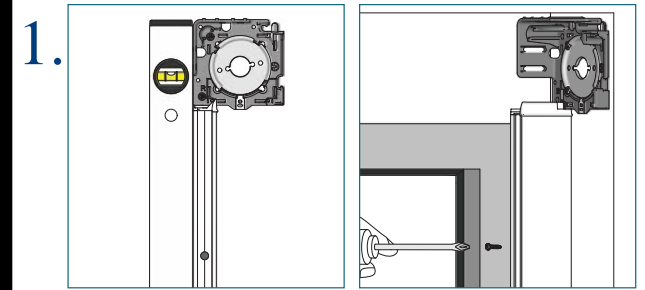


3. Place the side guiding channel sidwise into the upper clip. Level the side guiding channel. Slide a clip to the lower position. Level the bottom of the clip and side guiding channel.

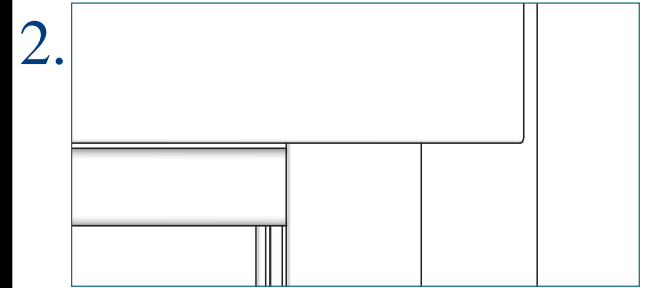


6. Place the side guiding channel above the clips. Snap the channel into the clips. Fix the left side guiding channel just like the first channel.

Installation in recess Inside mounting



1. Level the side guiding channel flush with the backside of the bracket. Fix the channel in this position (with provided screws).



2. Fix the left side guiding channel just like the first channel. Make sure that the bottom rail fits into the side guiding channels.