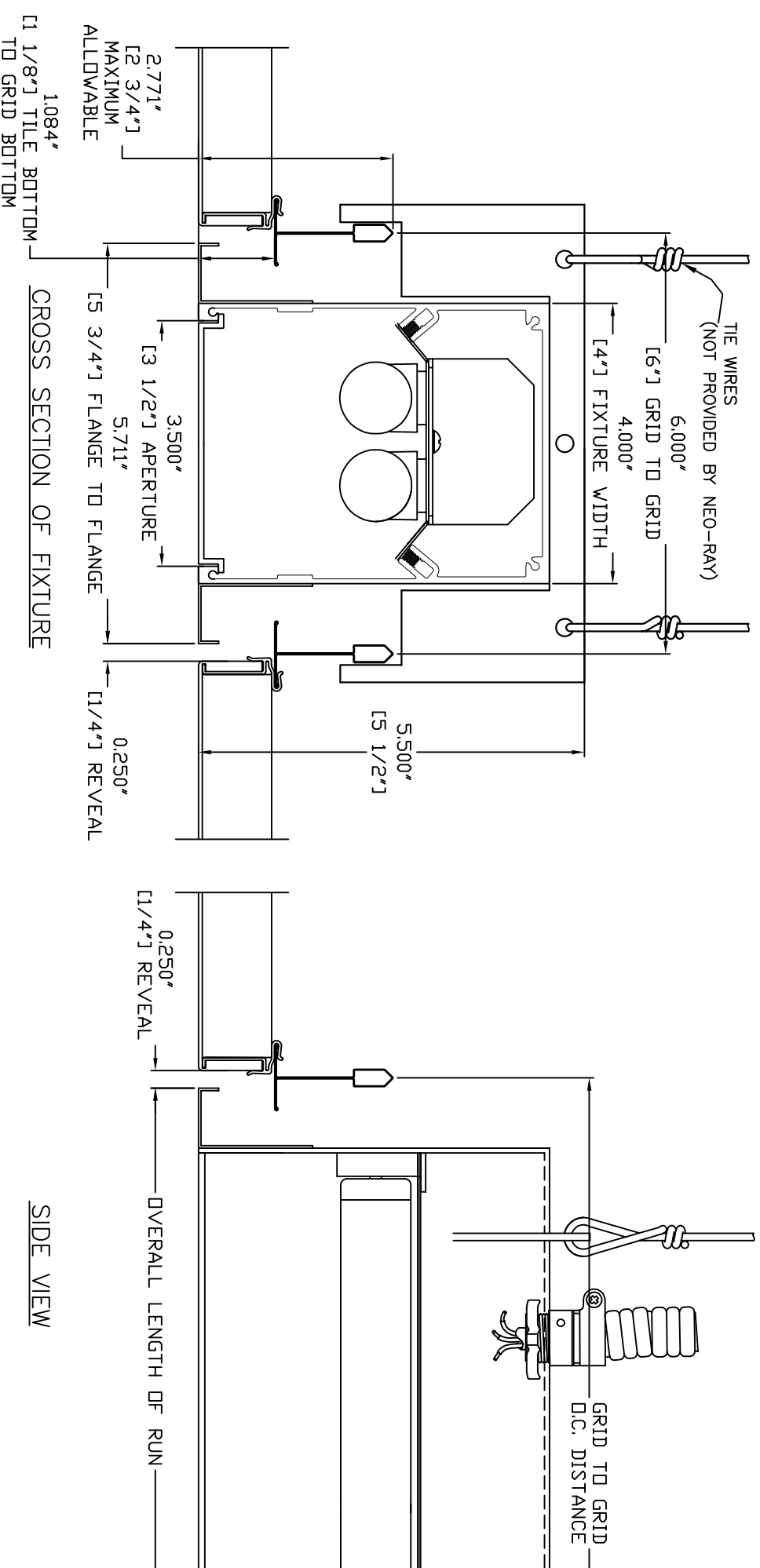


REMOVAL OF THE TOP GRID BRACKETS BY INSTALLING CONTRACTOR IS NECESSARY TO RAISE FIXTURES INTO THE CEILING SYSTEM. ONCE IN THE GRID, CONTRACTOR TO REINSTALL THE TOP GRID BRACKETS. ACCESS TO UPPER CEILING STRUCTURE IS REQUIRED TO MOUNT THE FIXTURES.



**SPECIFICATIONS**

- LIGHTING MOUNTING LENGTH: DIRECT HUNTER DOUGLAS TECHSTYLE NOMINAL 4', 6' & 8' HOUSING WITH HOUSING FLANGE AT END TO FIT GRID CEILING PATTERN
- SHIELDING LAMPS: S93 SATIN OPAL WHITE (2)T8, 3FT & 4FT (NOT BY NEO-RAY)
- BALLAST MATERIAL FINISH: UNIVERSAL VOLTAGE, ELECTRONIC INSTANT START EXTRUDED ALUMINUM HOUSINGS POWDER COATED BAKED WHITE

UL LISTED AND UNION MADE, IBEW/AFL-CIO

REVISIONS	DATE
A	
B	

THIS DOCUMENT IS THE CONFIDENTIAL AND PROPRIETARY PROPERTY OF NEO-RAY AND MAY NOT BE USED OR REPRODUCED NOR ITS CONTENTS DIVULGED WITHOUT NEO-RAY'S CONSENT OR KNOWLEDGE.

TYPE

APPROVED BY \_\_\_\_\_ DATE \_\_\_\_/\_\_\_\_/\_\_\_\_

CATALOG No. **PDR-S23DR/2T8-S93**  
HUNTER DOUGLAS TECHSTYLE CEILING

100 Andrews Road., Hicksville, N.Y. 11801  
TEL: 516-470-1000 FAX: 516-470-1077  
**neoray**  
COOPER Lighting www.COOPERLIGHTING.COM

**PROJECT**  
**TECHSTYLE CEILING**  
**HUNTER DOUGLAS**  
DISTRIBUTOR:

DRAWN BY \_\_\_\_\_ APPROVED \_\_\_\_\_ DRAWING NO. \_\_\_\_\_  
DATE \_\_\_\_\_ SCALE \_\_\_\_\_ SHEET OF \_\_\_\_\_

CATALOG No. **PDR8757-S23DSR/2T8-SI-S93**

QUANTITY	TYPE	GRID TO GRID OC DISTANCE	OVERALL LENGTH OF RUN	8'			6'			4'			3'		
				IND	BOR	INT	IND	BOR	INT	IND	BOR	INT	IND	BOR	INT
<b>TOTALS</b>															

THIS IS NEO-RAY'S UNDERSTANDING OF THE LIGHTING FIXTURE REQUIREMENTS. THE CUSTOMER IS RESPONSIBLE FOR CONFIRMING THIS DATA WITH THE PROJECT REQUIREMENTS.