

# E Screen 7505

5% openness

Fabric is also available in: 1% openness (see E Screen 7501)  
3% openness (see E Screen 7503)  
10% openness (see E Screen 7510)



WHITE/WHITE



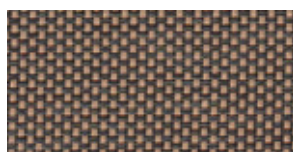
WHITE/PEARL



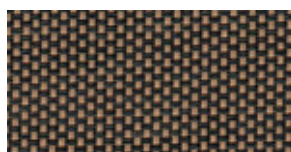
WHITE/LINEN



LINEN/LINEN



COCOA/APRICOT



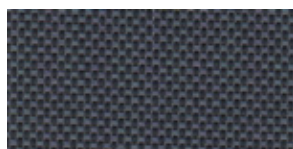
CHARCOAL/APRICOT



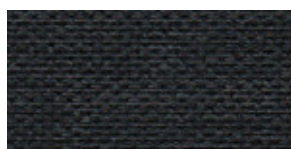
COCOA/COCOA



CHARCOAL/COCOA



CHARCOAL / GREY



CHARCOAL/CHARCOAL

## Specifications

MAX. FABRIC WIDTH: 122"  
ROLL LENGTH: 30 yd  
FABRIC WEIGHT: 10.7 oz/yd<sup>2</sup> ± 5%  
FABRIC THICKNESS: .016" ± 5%  
OPENNESS FACTOR: 5%  
COMPOSITION: 36% Fiberglass, 64% Vinyl

UV BLOCKAGE: 95%  
FIRE CLASSIFICATION: NFPA 701-10 TM#1,  
California U.S. Title 19  
FUNGAL RESISTANCE: ASTM E2180, ASTM G21  
BREAKING STRENGTH: Warp 290 / Weft 280 lbs.

	SOLAR OPTICAL PROPERTIES				SC	SHGC/G Value	
COLOR	TS	RS	AS	TV	1/4 CL	CL-S	DG
WHITE/WHITE	20	71	9	17	0.37	0.32	0.34
WHITE/PEARL	12	51	37	9	0.49	0.43	0.40
WHITE/LINEN	20	62	18	16	0.44	0.38	0.37
LINEN/LINEN	22	50	28	17	0.52	0.45	0.41
COCOA/APRICOT	10	17	73	8	0.72	0.63	0.51
CHARCOAL/APRICOT	7	15	78	6	0.72	0.63	0.52
COCOA/COCOA	7	9	84	6	0.77	0.67	0.54
CHARCOAL/COCOA	7	6	87	7	0.79	0.69	0.55
CHARCOAL/GREY	7	10	83	7	0.76	0.66	0.54
CHARCOAL/CHARCOAL	4	6	90	4	0.78	0.68	0.55

**TS** Solar Transmittance  
**RS** Solar Reflectance  
**AS** Solar Absorptance  
**TV** Visual Transmittance  
**SC** Shading Coefficient  
**SHGC** Solar Heat Gain Coefficient

**1/4 CL** 1/4" Clear Glass  
**CL-S** 4mm Clear Glass, Single Glazing  
**DG** Double Glazing 4mm/16mm/4mm with low E-coating in position 3, space filled with Argon

- The Solar Optical Properties are used to calculate the Shading Coefficient.
- The Shading Coefficient represents the percentage of solar heat gain that is transmitted to the interior through the glass and shading system. Darker colors provide maximum glare reduction and visibility.
- The Solar Heat Gain Coefficient represents the percentage of solar energy directly transmitted and re-radiated to the inside through the glazing system.