

E Screen 7503

3% openness

Fabric is also available in: 1% openness (see E Screen 7501)
5% openness (see E Screen 7505)
10% openness (see E Screen 7510)



WHITE/WHITE



WHITE/PEARL



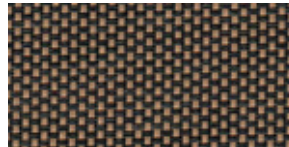
WHITE/LINEN



LINEN/LINEN



COCOA/APRICOT



CHARCOAL/APRICOT



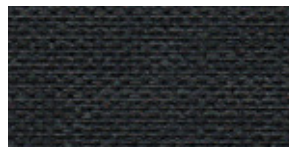
COCOA/COCOA



CHARCOAL/COCOA



CHARCOAL/GREY



CHARCOAL/CHARCOAL

Specifications

MAX. FABRIC WIDTH: 122"
ROLL LENGTH: 30 yd
FABRIC WEIGHT: 11.6 oz/yd² ± 5%
FABRIC THICKNESS: .017" ± 5%
OPENNESS FACTOR: 3%
COMPOSITION: 36% Fiberglass, 64% Vinyl

UV BLOCKAGE: 97%
FIRE CLASSIFICATION: NFPA 701-10 TM#1,
California U.S. Title 19
FUNGAL RESISTANCE: ASTM E2180, ASTM G21
BREAKING STRENGTH: Warp 280 / Weft 250 lbs.

	SOLAR OPTICAL PROPERTIES				SC	SHGC/G Value	
COLOR	TS	RS	AS	TV	1/4 CL	CL-S	DG
WHITE/WHITE	16	73	11	13	0.36	0.31	0.33
WHITE/PEARL	10	52	38	8	0.48	0.42	0.40
WHITE/LINEN	16	63	21	12	0.43	0.37	0.37
LINEN/LINEN	18	52	30	13	0.49	0.43	0.40
COCOA/APRICOT	7	19	74	6	0.70	0.61	0.51
CHARCOAL/APRICOT	7	18	75	7	0.71	0.62	0.51
COCOA/COCOA	5	9	86	5	0.77	0.67	0.54
CHARCOAL/COCOA	4	7	89	3	0.78	0.68	0.55
CHARCOAL/GREY	5	10	85	5	0.76	0.66	0.54
CHARCOAL/CHARCOAL	5	4	91	4	0.80	0.70	0.56

TS Solar Transmittance
RS Solar Reflectance
AS Solar Absorptance
TV Visual Transmittance
SC Shading Coefficient
SHGC Solar Heat Gain Coefficient

1/4 CL 1/4" Clear Glass
CL-S 4mm Clear Glass, Single Glazing
DG Double Glazing 4mm/16mm/4mm with low E-coating in position 3, space filled with Argon

- The Solar Optical Properties are used to calculate the Shading Coefficient.
- The Shading Coefficient represents the percentage of solar heat gain that is transmitted to the interior through the glass and shading system. Darker colors provide maximum glare reduction and visibility.
- The Solar Heat Gain Coefficient represents the percentage of solar energy directly transmitted and re-radiated to the inside through the glazing system.